



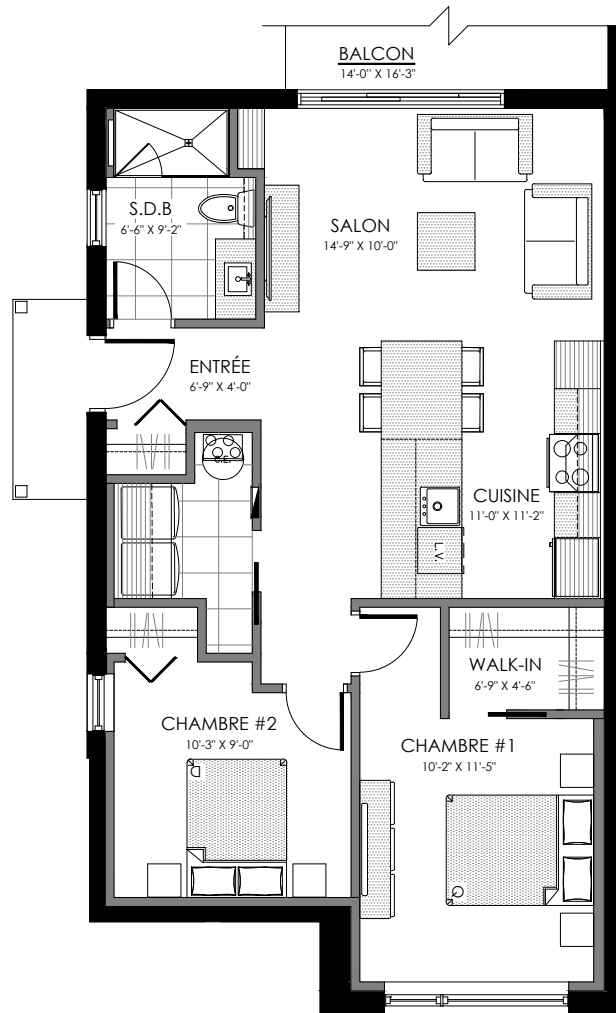
1569 à 1583 Rue Calypso, MAGOG

---

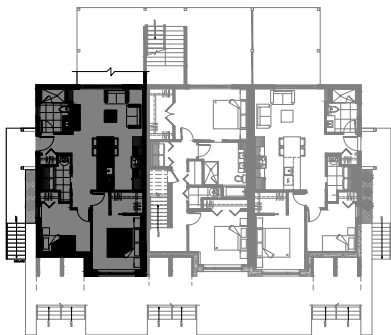
8 LOGEMENTS

# 4 1/2 - LOGEMENT - 1569

SUPERFICIE HABITABLE: 885 pi<sup>2</sup>



1569 Rue Calypso, Magog

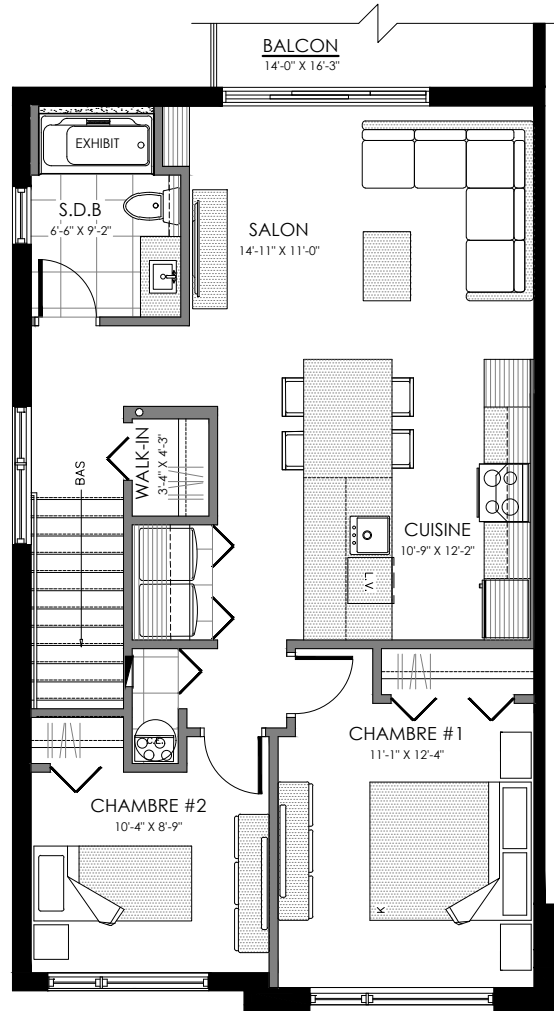


NIVEAU SOUS-SOL



# 4 1/2 - LOGEMENT - 1571

SUPERFICIE HABITABLE: 920 pi<sup>2</sup>



1571 Rue Calypso, Magog

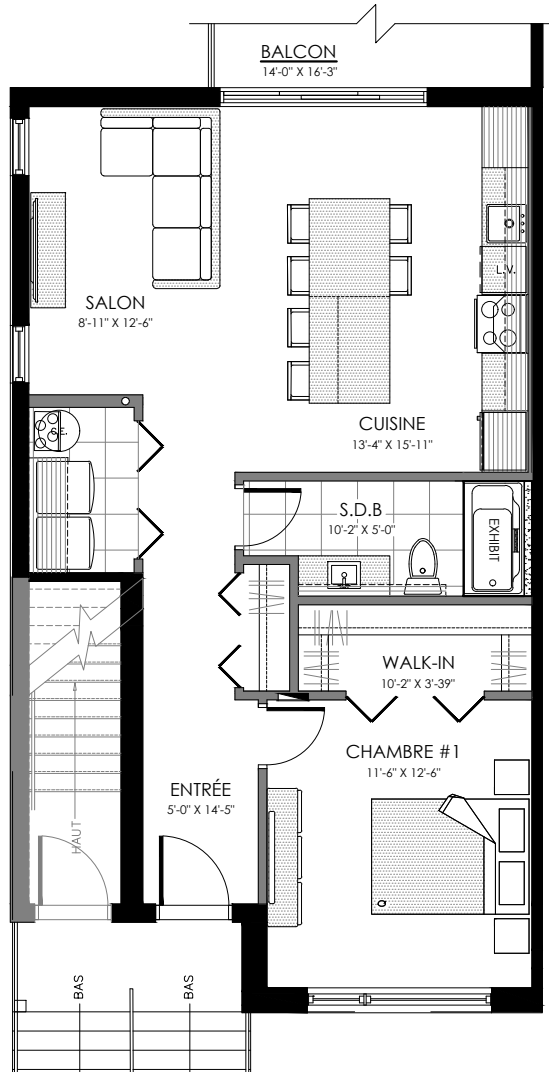


NIVEAU 2

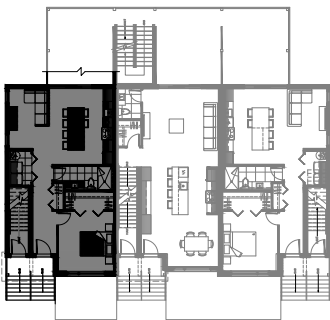


# 3 1/2 - LOGEMENT - 1573

SUPERFICIE HABITABLE: 815 pi<sup>2</sup>



1573 Rue Calypso, Magog

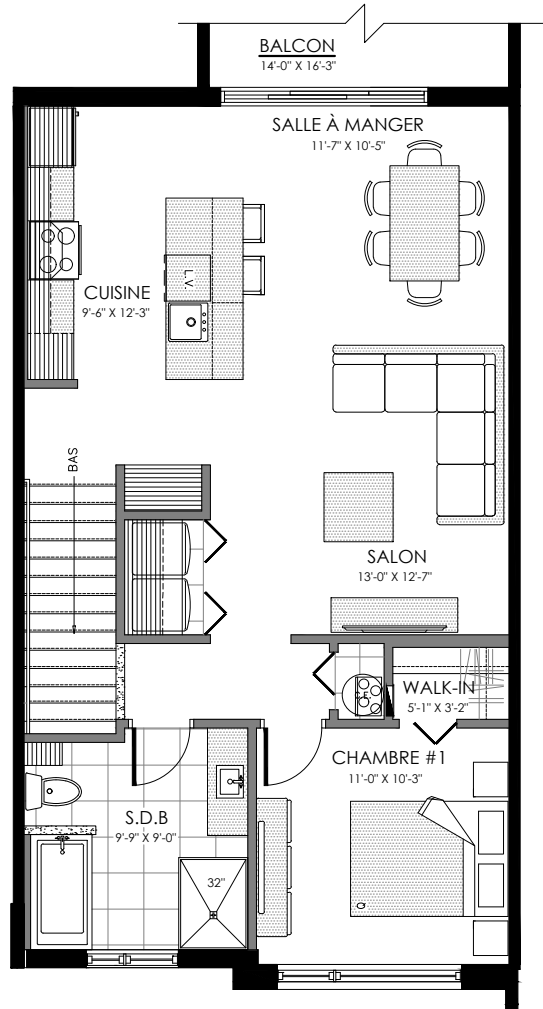


NIVEAU 1

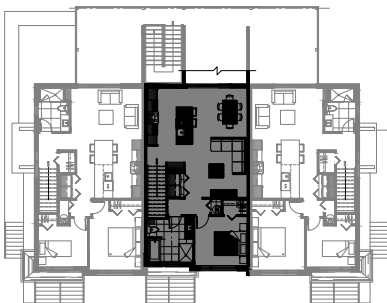


# 3 1/2 - LOGEMENT - 1575

SUPERFICIE HABITABLE: 850pi<sup>2</sup>



1575 Rue Calypso, Magog

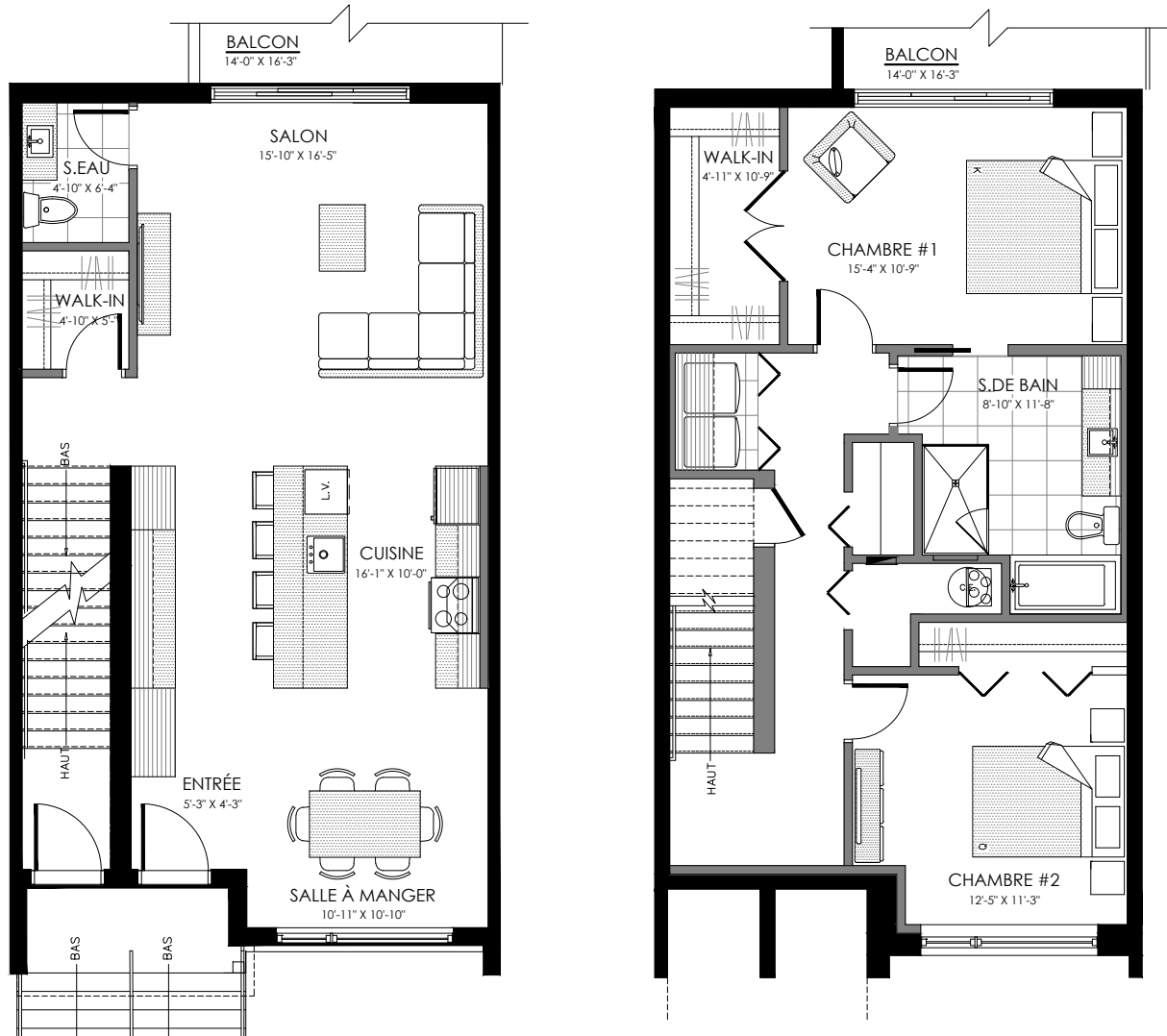


NIVEAU 2

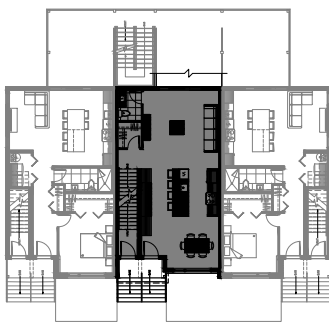


# 4 1/2 - LOGEMENT - 1577

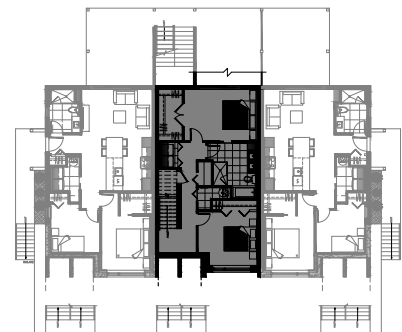
SUPERFICIE HABITABLE: 1590 pi<sup>2</sup>



1577 Rue Calypso, Magog



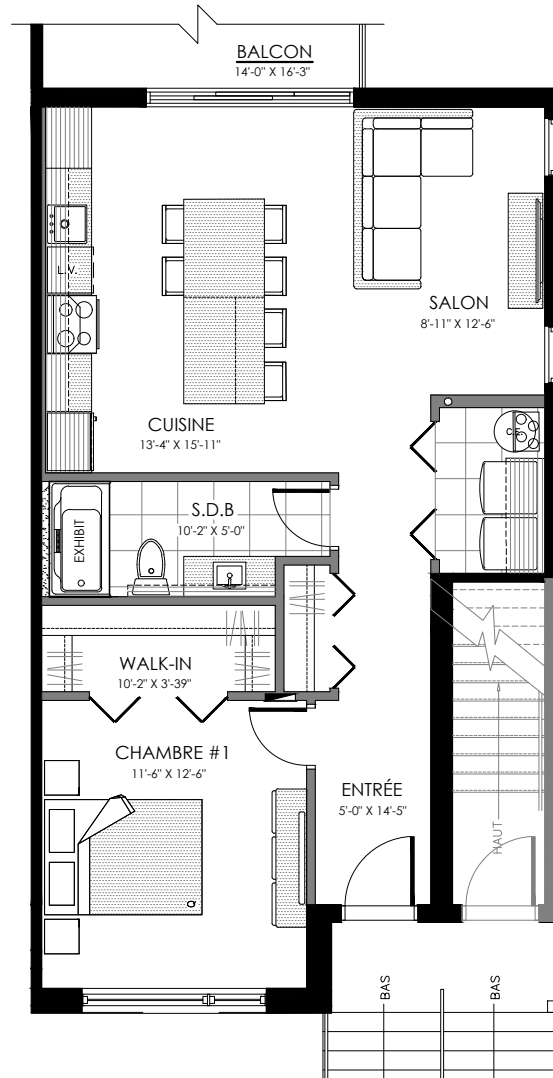
NIVEAU 1



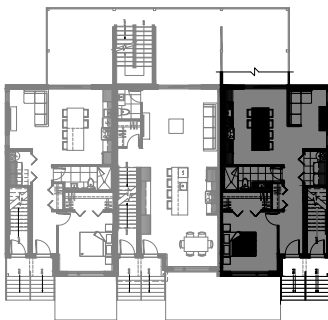
NIVEAU SOUS-SOL

# 3 1/2 - LOGEMENT - 1579

SUPERFICIE HABITABLE: 815pi<sup>2</sup>



1579 Rue Calypso, Magog

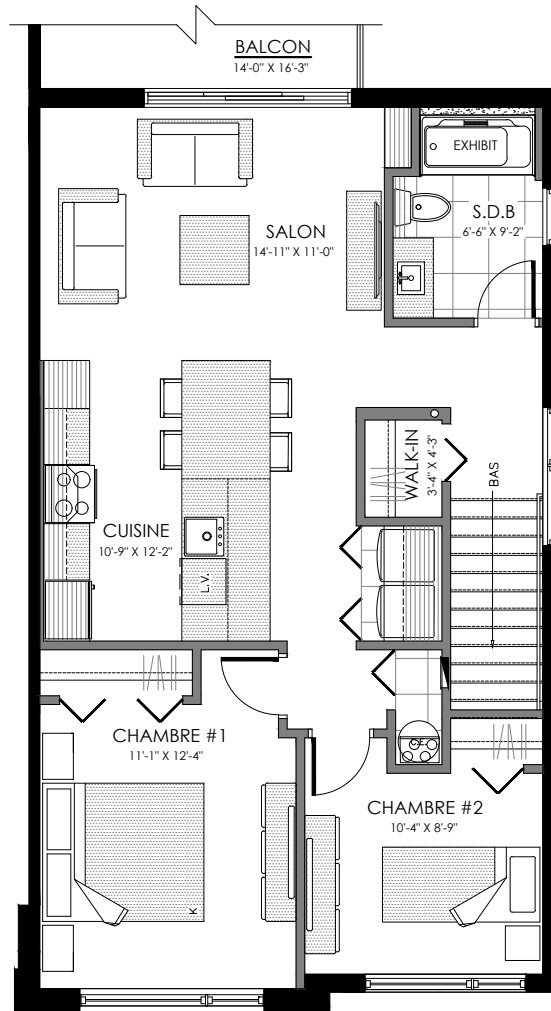


NIVEAU 1



# 4 1/2 - LOGEMENT - 1581

SUPERFICIE HABITABLE: 920 pi<sup>2</sup>



1581 Rue Calypso, Magog



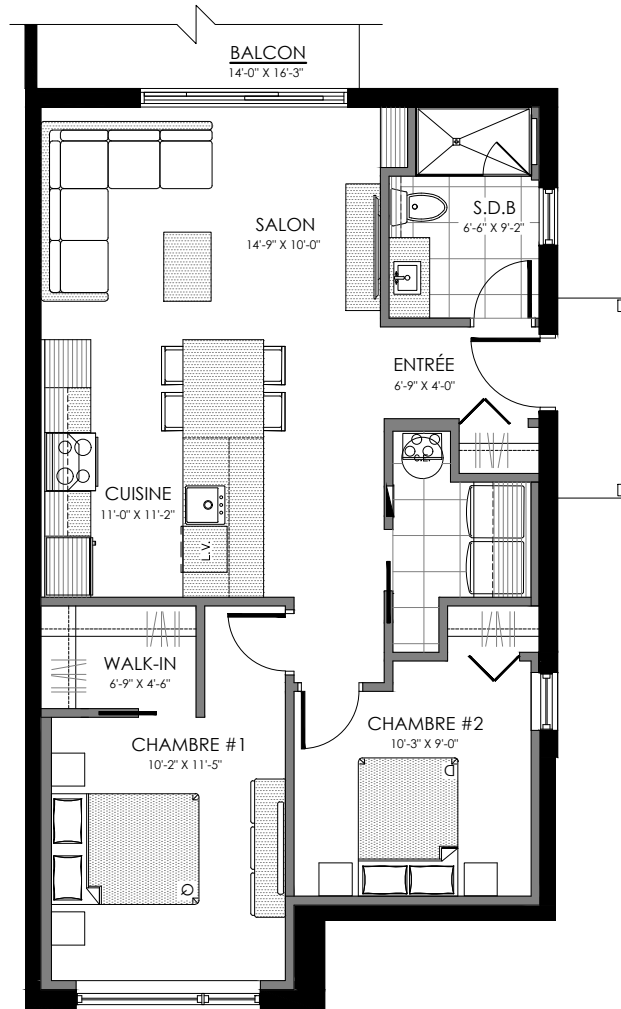
NIVEAU 2





# 4 1/2 - LOGEMENT - 1583

SUPERFICIE HABITABLE: 885 pi<sup>2</sup>



1583 Rue Calypso, Magog



NIVEAU SOUS-SOL

