

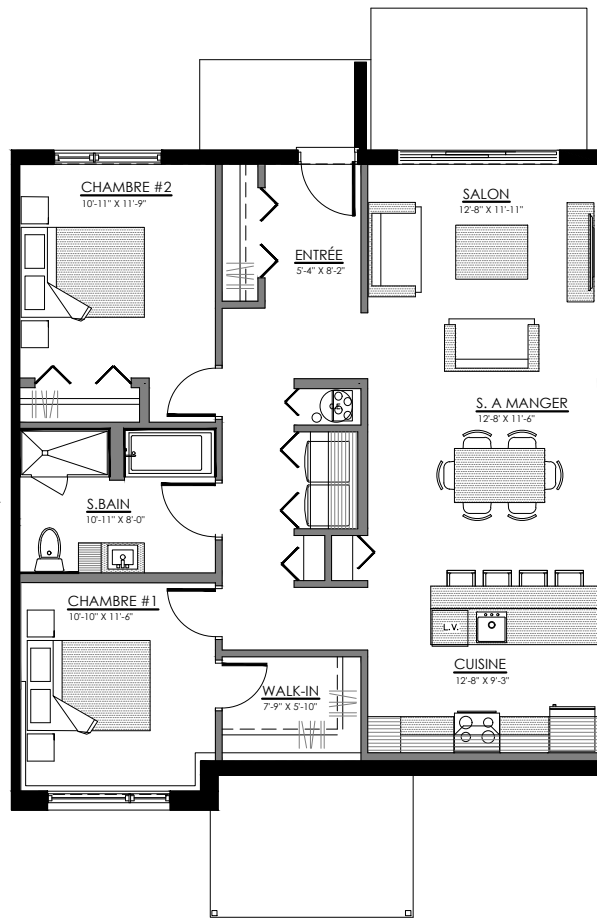


5440 à 5454 boul. René-Levesque, Sherbrooke

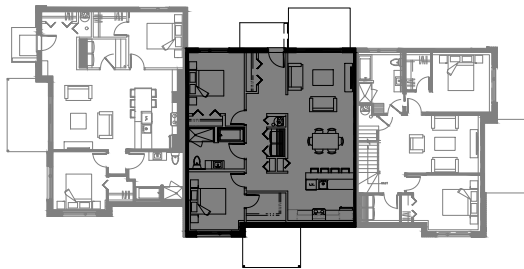
8 LOGEMENTS

4 1/2 - LOGEMENT NIV. 1 (ARRIÈRE)

SUPERFICIE HABITABLE: 1170 pi²



5440 Boul. René-Levesque, Sherbrooke

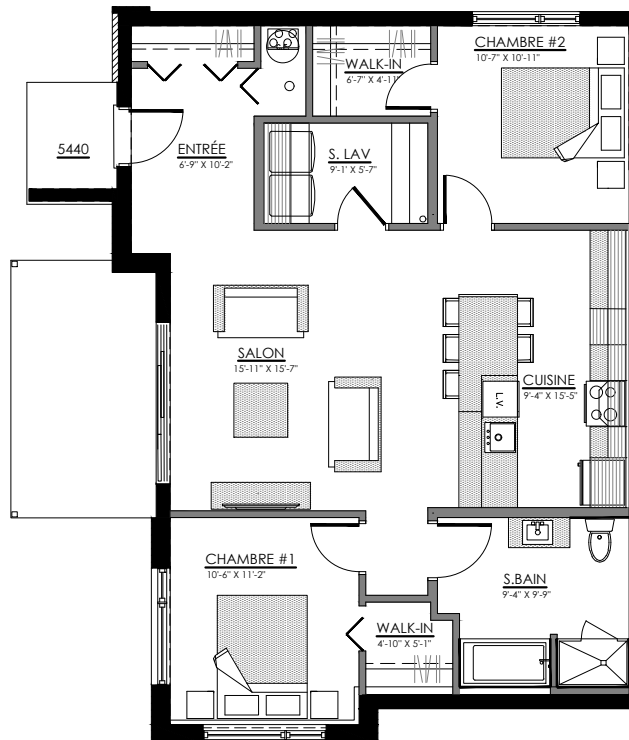


NIVEAU 1

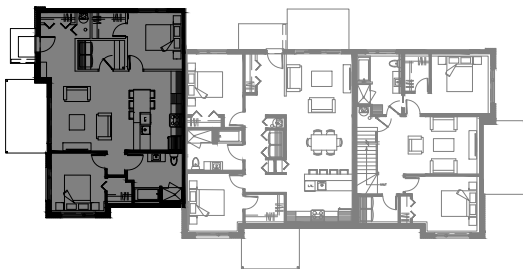


4 1/2 - LOGEMENT NIV. 1 (COTÉ GAUCHE)

SUPERFICIE HABITABLE: 1 100 pi²



5442 Boul. René-Levesque, Sherbrooke

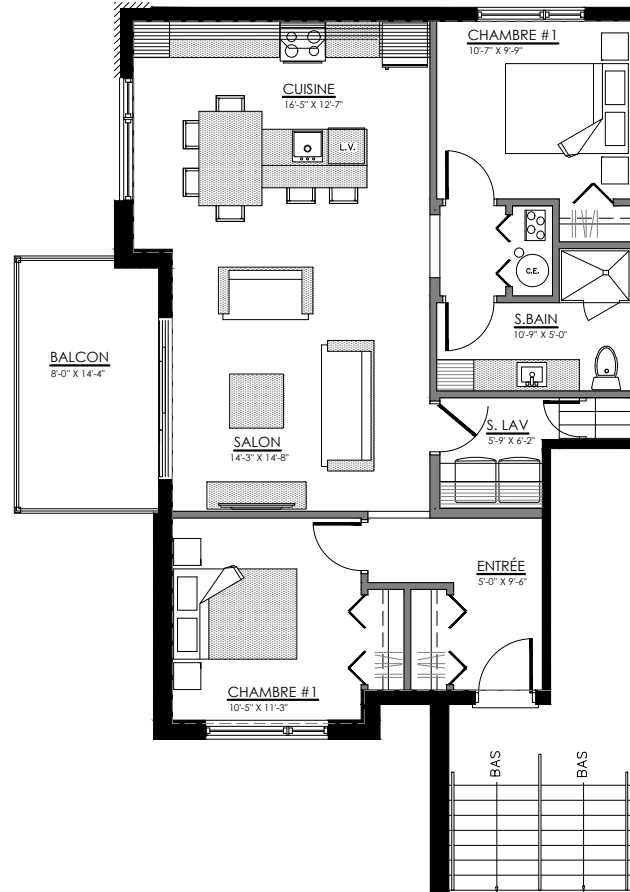


NIVEAU 1

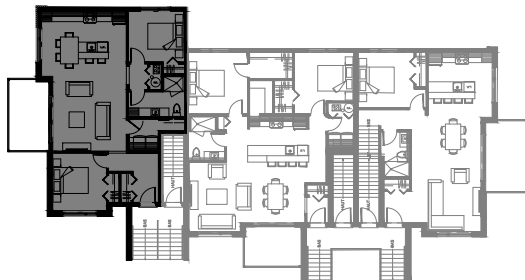


4 1/2 - LOGEMENT NIV. 2 (AVANT)

SUPERFICIE HABITABLE: 1030 pi²



5444 Boul. René-Levesque, Sherbrooke

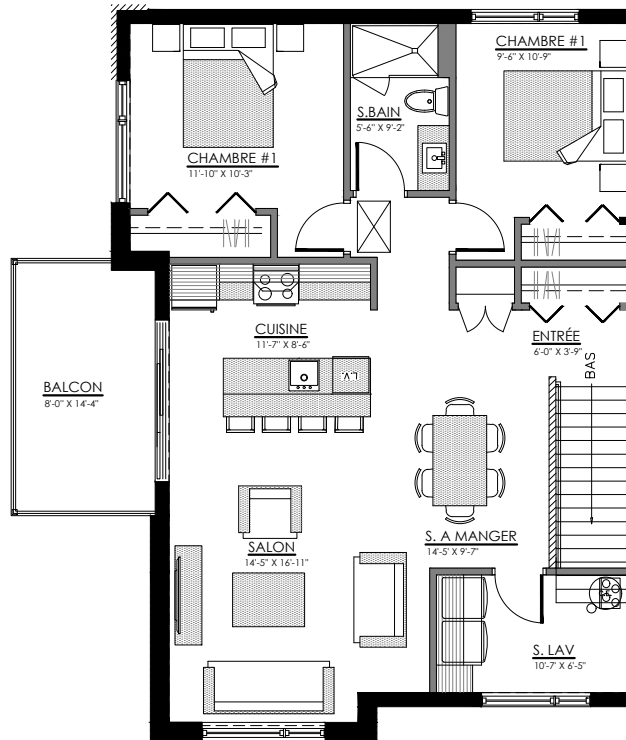


NIVEAU 2

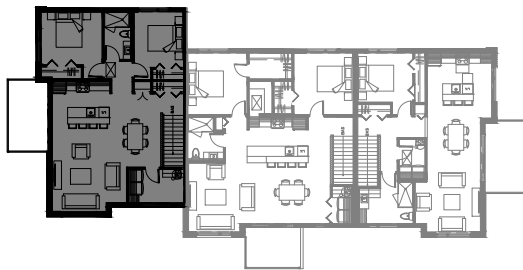


4 1/2 - LOGEMENT NIV. 3 (AVANT)

SUPERFICIE HABITABLE: 1135 pi²



5446 Boul. René-Levesque, Sherbrooke

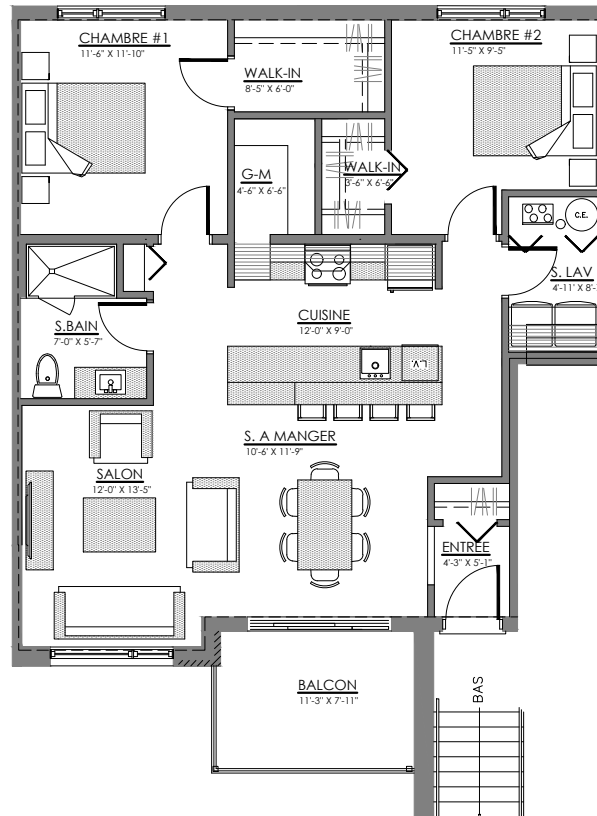


NIVEAU 3

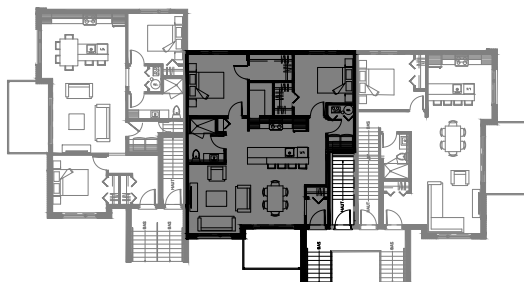


4 1/2 - LOGEMENT NIV. 2 (AVANT)

SUPERFICIE HABITABLE: 1095 pi²



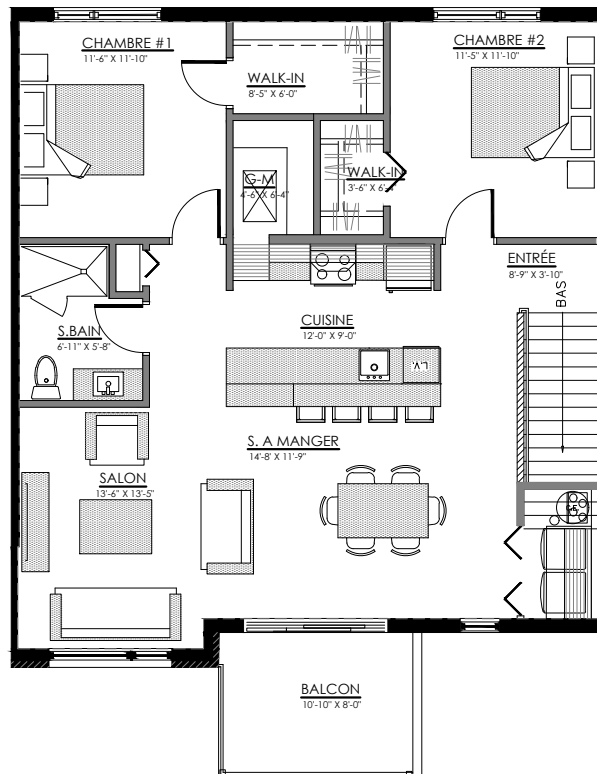
5448 Boul. René-Levesque, Sherbrooke



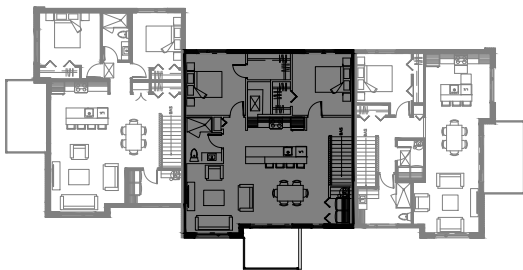
NIVEAU 2

4 1/2 - LOGEMENT NIV. 3 (AVANT)

SUPERFICIE HABITABLE: 1210 pi²



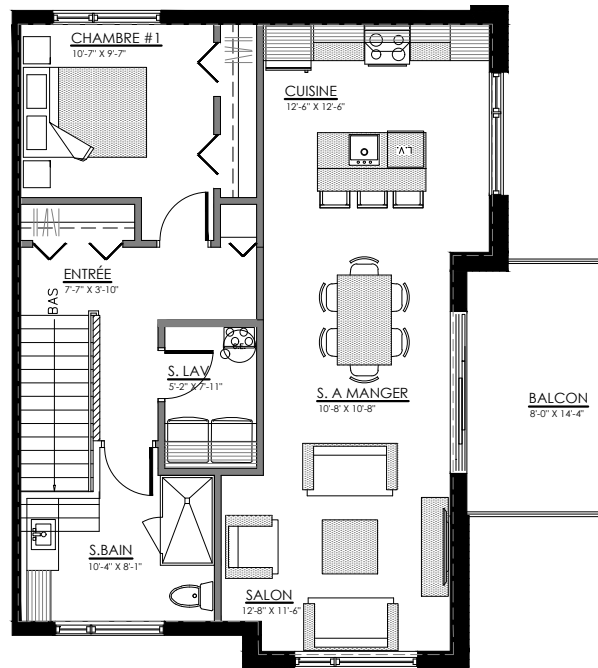
5450 Boul. René-Levesque, Sherbrooke



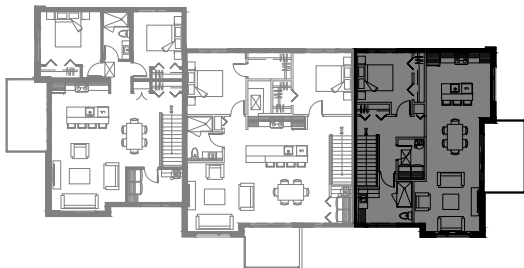
NIVEAU 3

3 1/2 - LOGEMENT NIV. 3 (AVANT)

SUPERFICIE HABITABLE: 975 pi²



5452 Boul. René-Levesque, Sherbrooke

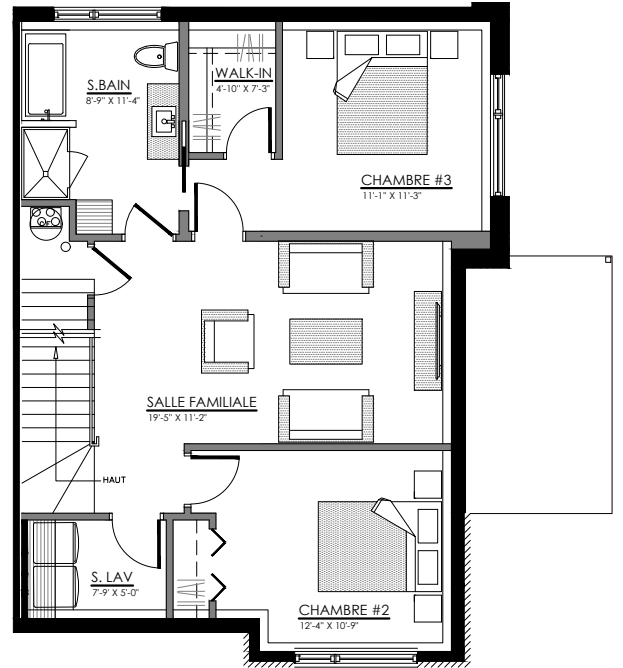
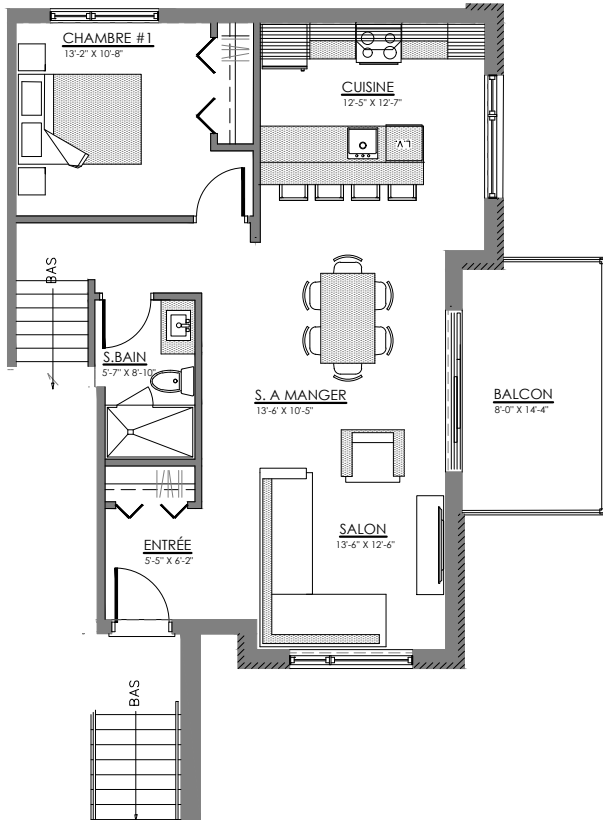


NIVEAU 3



5 1/2 - LOGEMENT NIV. 1 & 2 (AVANT)

SUPERFICIE HABITABLE: 1800 pi²



5454 Boul. René-Levesque, Sherbrooke



NIVEAU 2

