

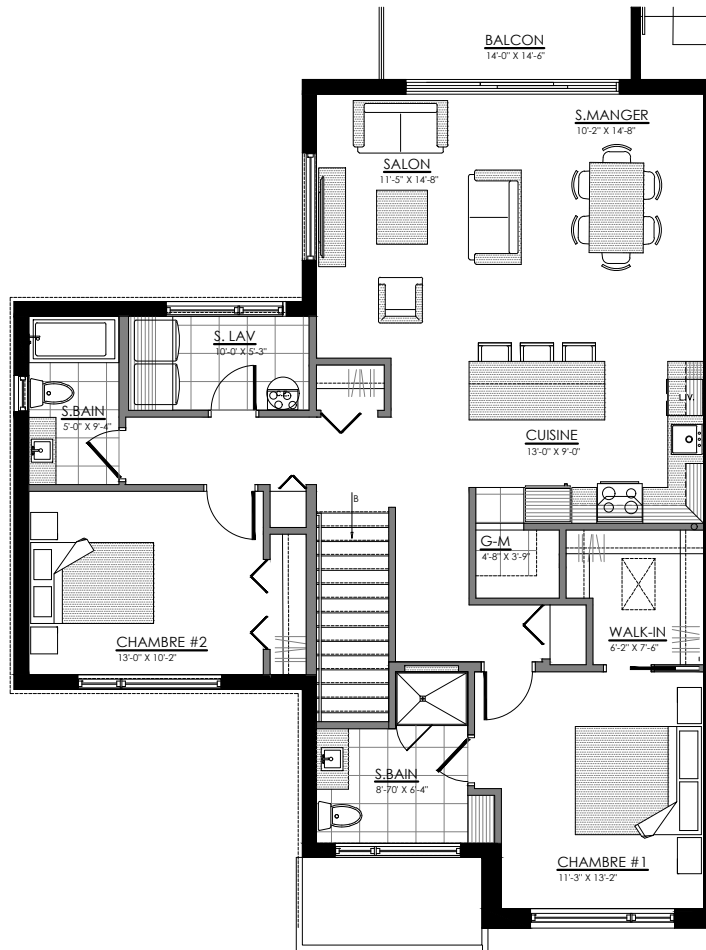


1619 à 1633 Rue Calypso, MAGOG

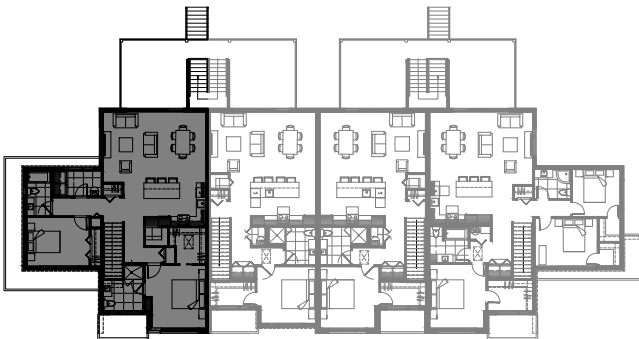
8 LOGEMENTS

4 1/2 - LOGEMENT NIV. 2

SUPERFICIE HABITABLE: 1380 pi²



1619 Rue Calypso, Magog

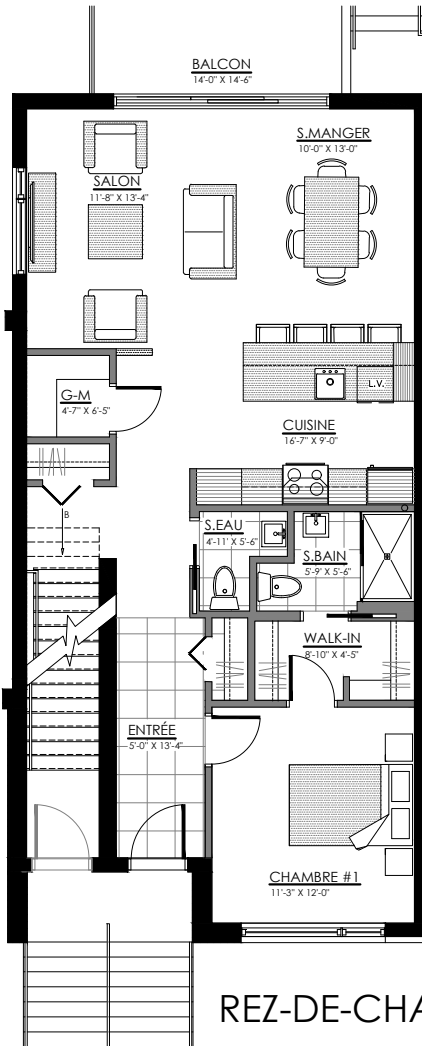


NIVEAU 2

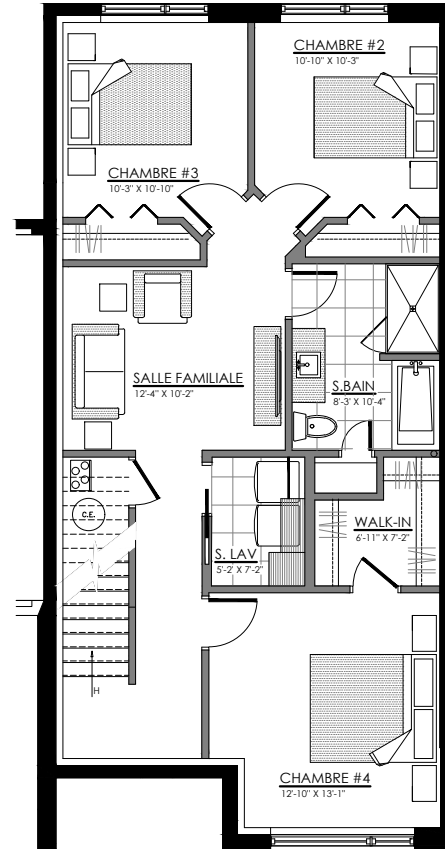


6 1/2 - LOGEMENT NIV. 1

SUPERFICIE HABITABLE: 1985 pi²

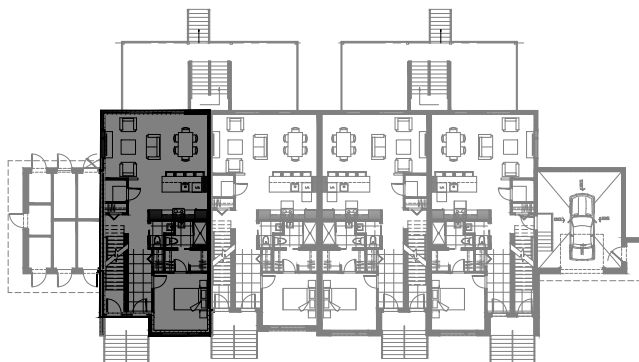


REZ-DE-CHAUSSÉE



SOUS-SOL

1621 Rue Calypso, Magog

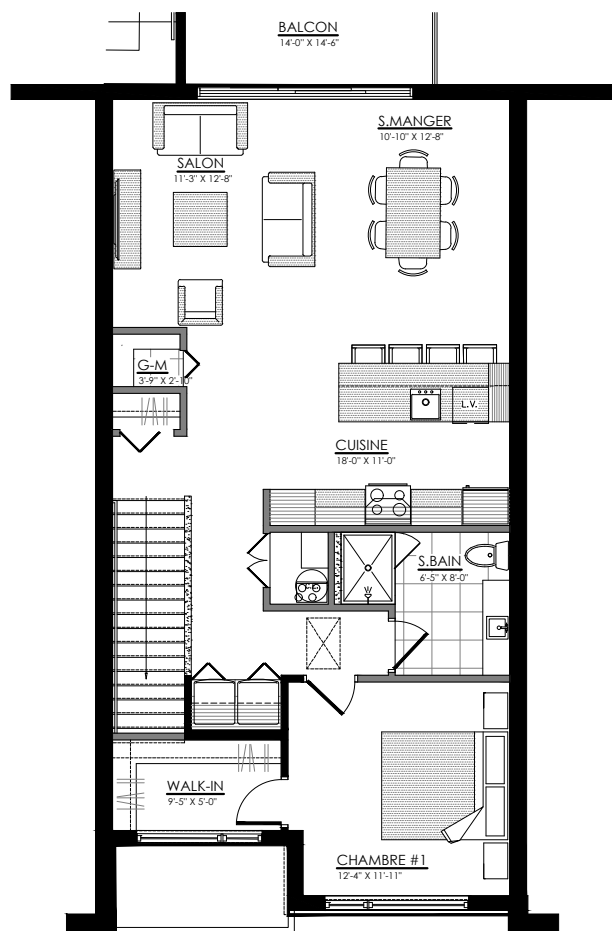


NIVEAU 1

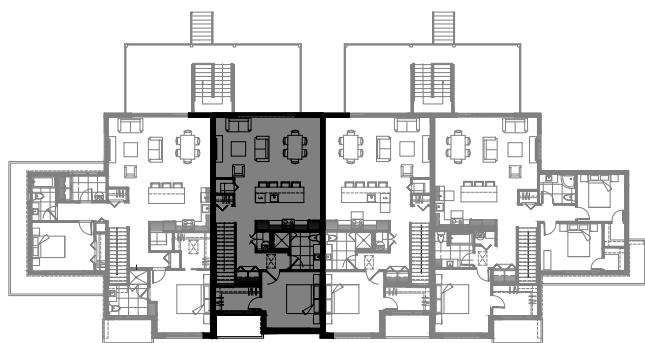


3 1/2 - LOGEMENT NIV. 2

SUPERFICIE HABITABLE: 1020 pi²



1623 Rue Calypso, Magog

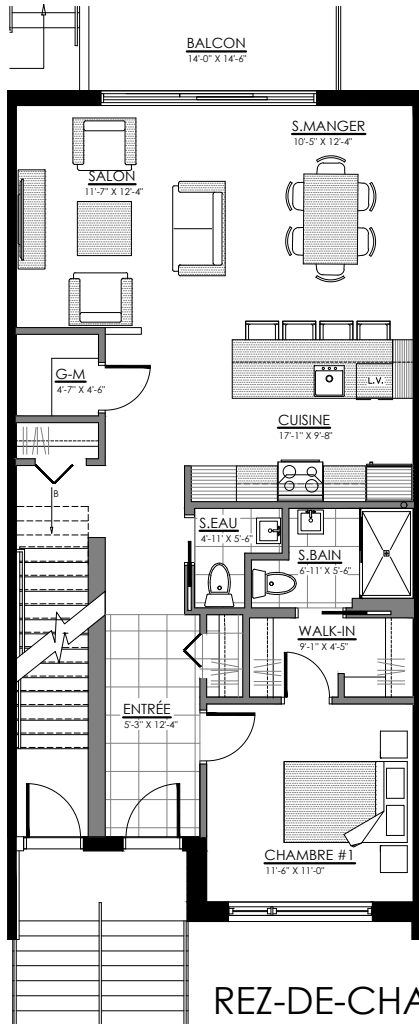


NIVEAU 2

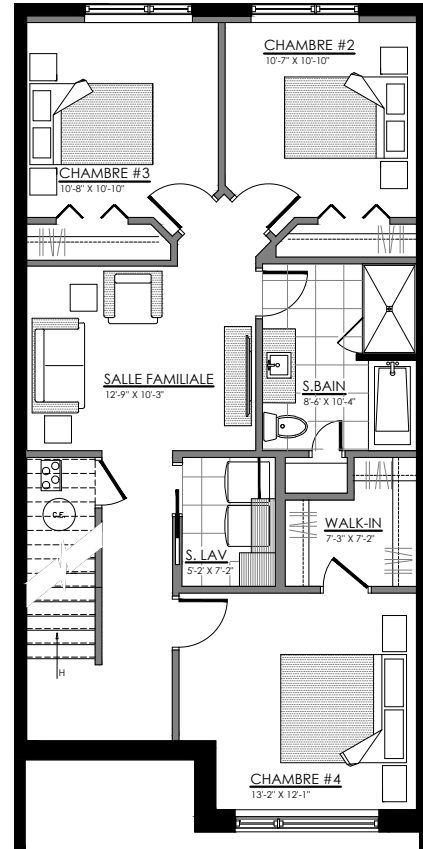


6 1/2 - LOGEMENT NIV. 1

SUPERFICIE HABITABLE: 1970 pi²

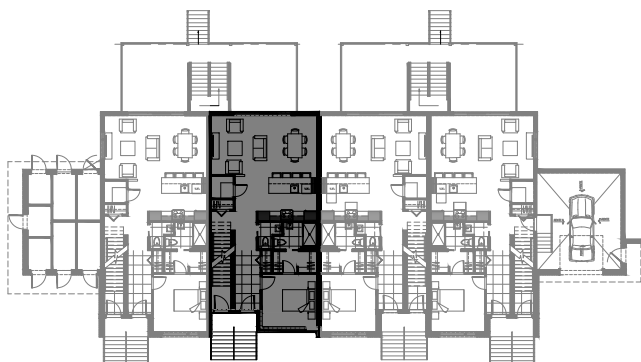


REZ-DE-CHAUSSÉE



SOUS-SOL

1625 Rue Calypso, Magog

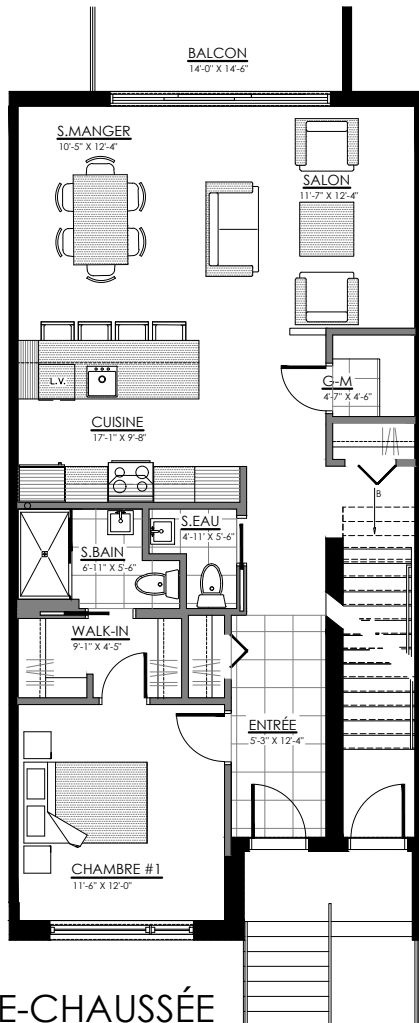


NIVEAU 1

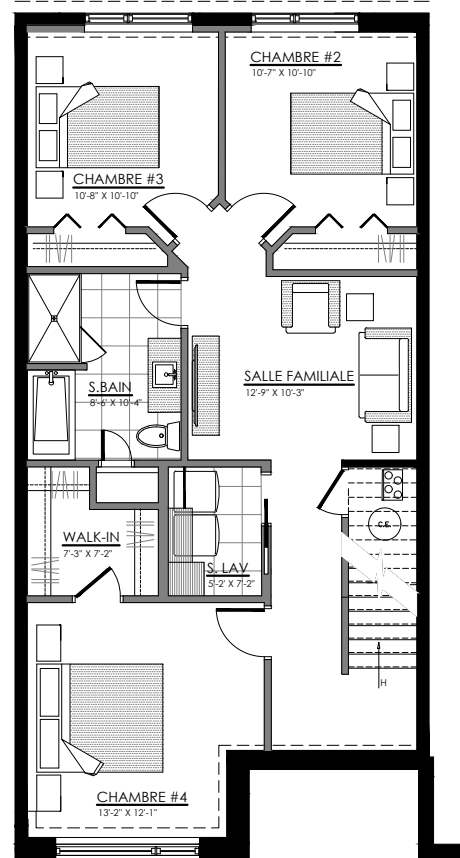


6 1/2 - LOGEMENT NIV. 1

SUPERFICIE HABITABLE: 1985 pi²

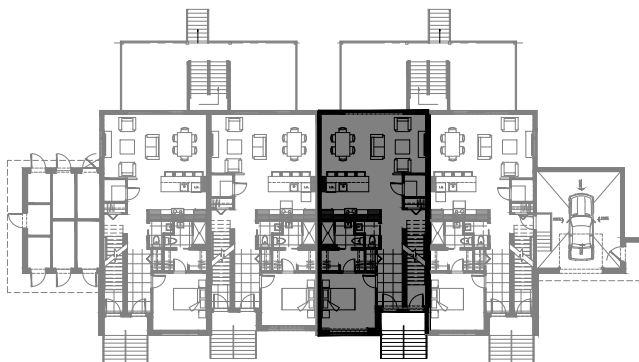


REZ-DE-CHAUSSÉE



SOUS-SOL

1627 Rue Calypso, Magog

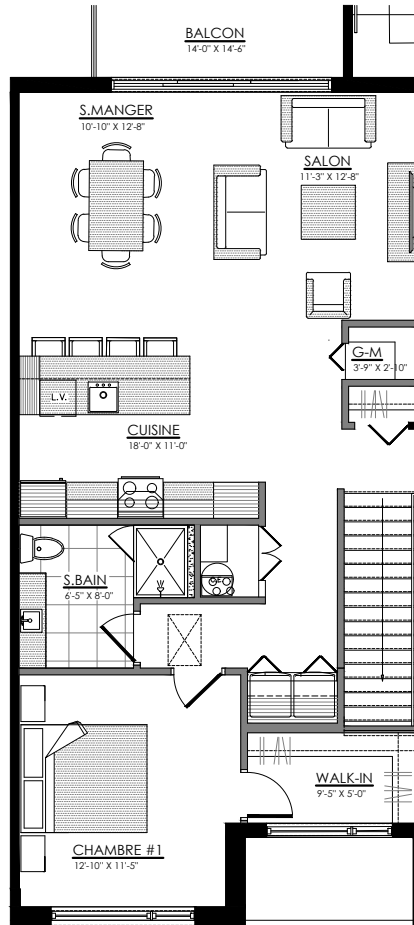


NIVEAU 1

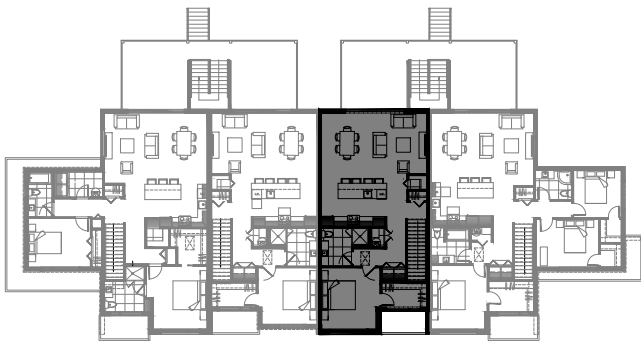


3 1/2 - LOGEMENT NIV. 2

SUPERFICIE HABITABLE: 1034 pi²



1629 Rue Calypso, Magog

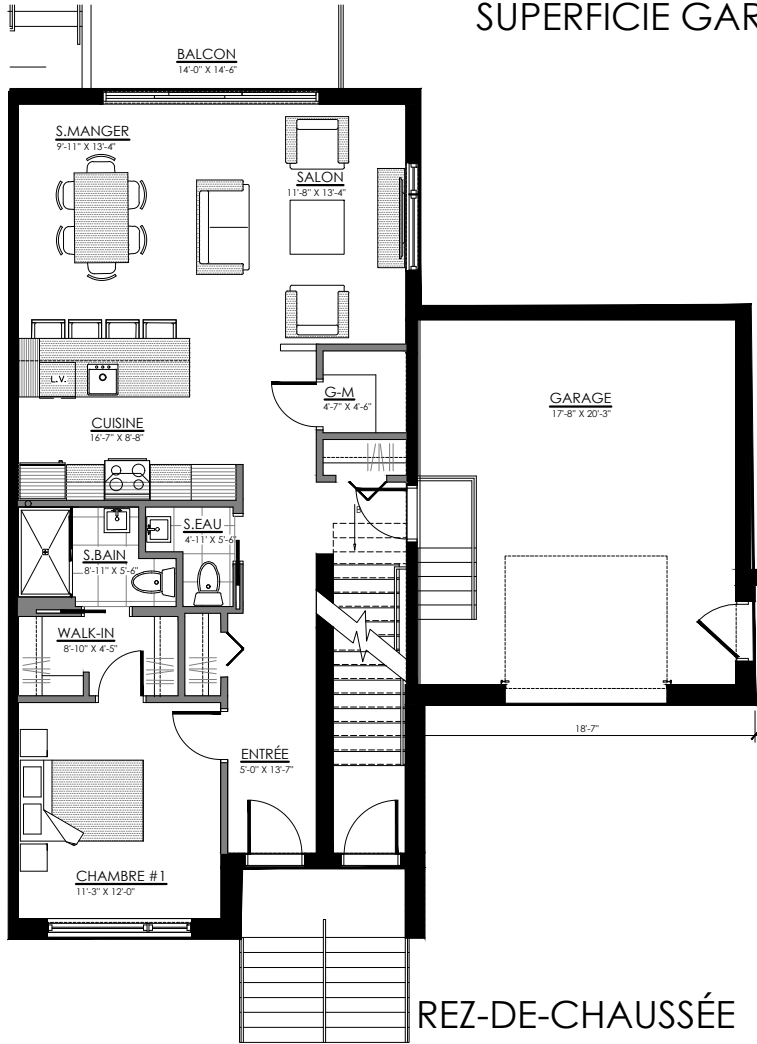


NIVEAU 2

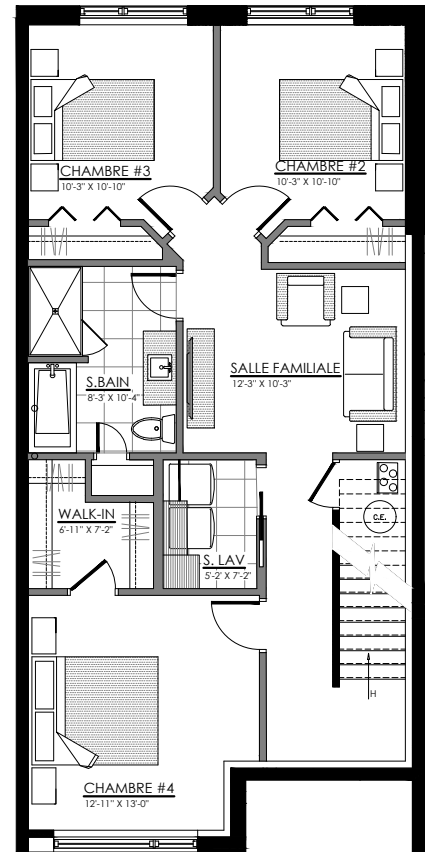


6 1/2 - LOGEMENT NIV. 1

SUPERFICIE HABITABLE: 1990 pi²
SUPERFICIE GARAGE: 410 pi²

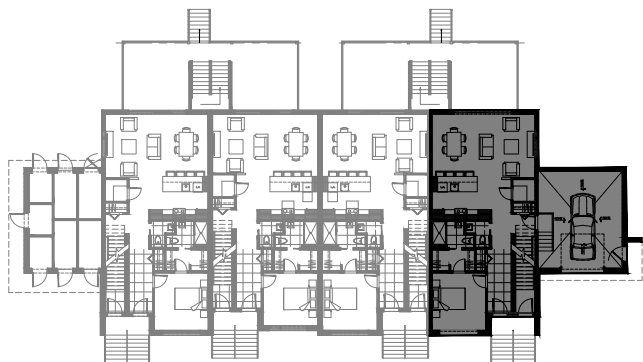


REZ-DE-CHAUSSÉE



SOUS-SOL

1631 Rue Calypso, Magog

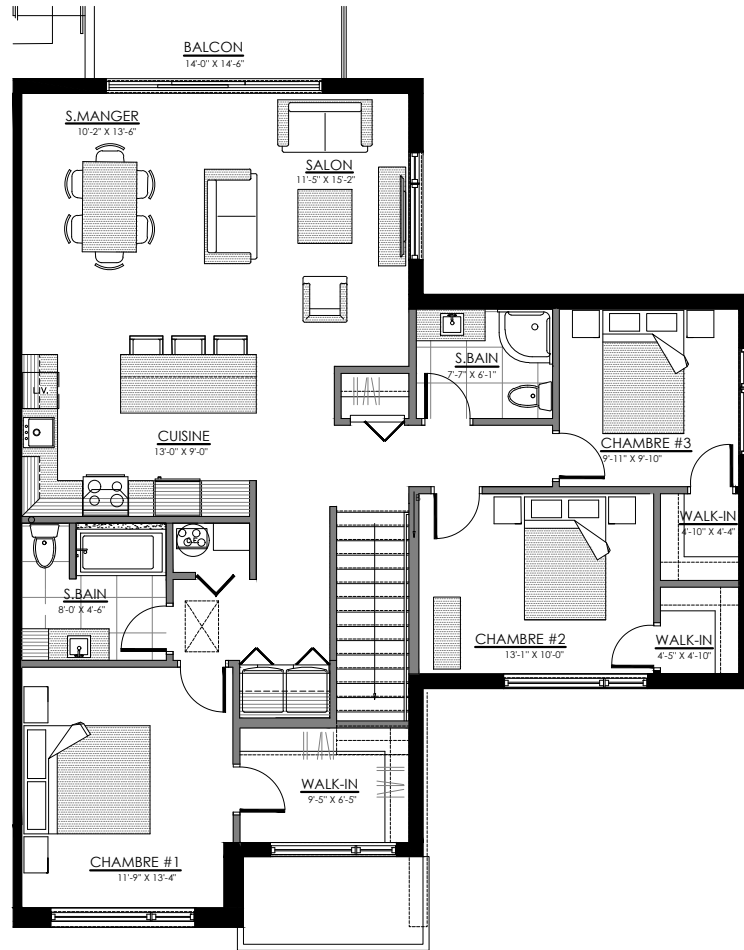


NIVEAU 1

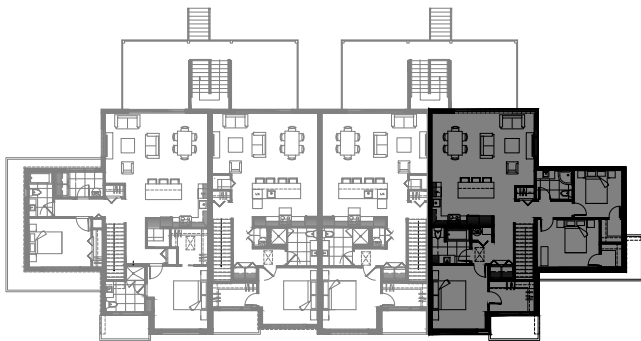


5 1/2 - LOGEMENT NIV. 2

SUPERFICIE HABITABLE: 1440 pi²



1633 Rue Calypso, Magog



NIVEAU 2

