

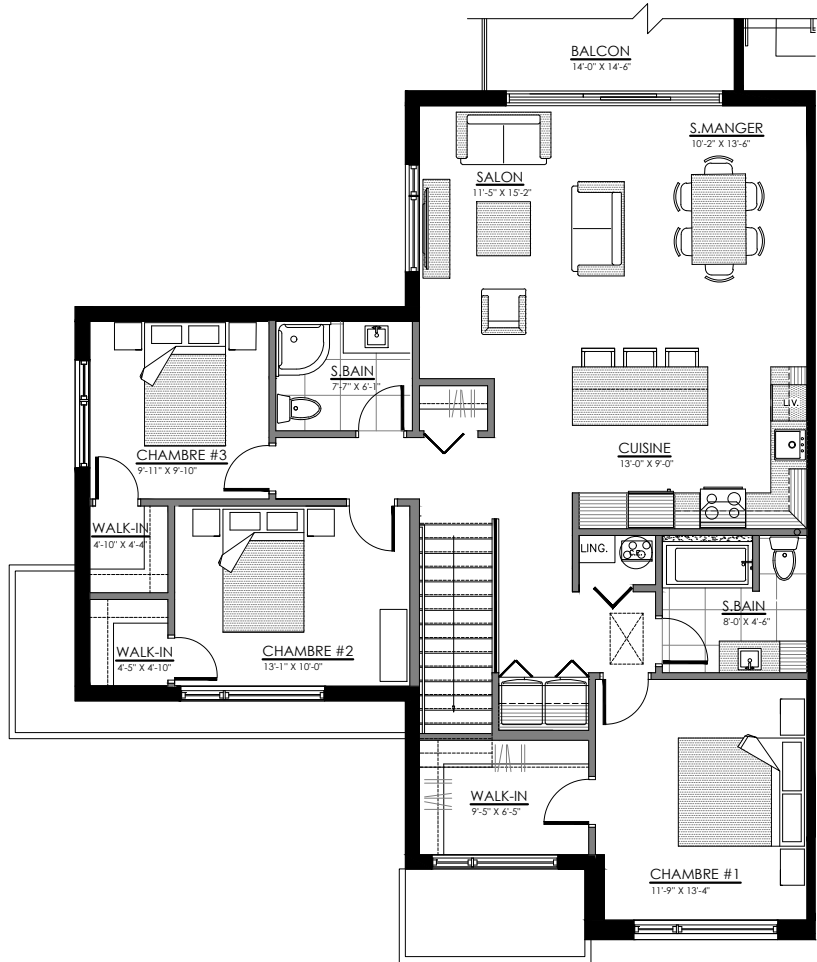


1597 à 1611 Rue Calypso, MAGOG

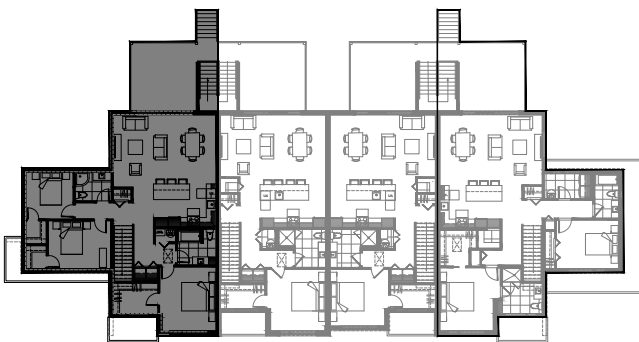
8 LOGEMENTS

5 1/2 - LOGEMENT NIV. 2

SUPERFICIE HABITABLE: 1440 pi²



1597 Rue Calypso, Magog

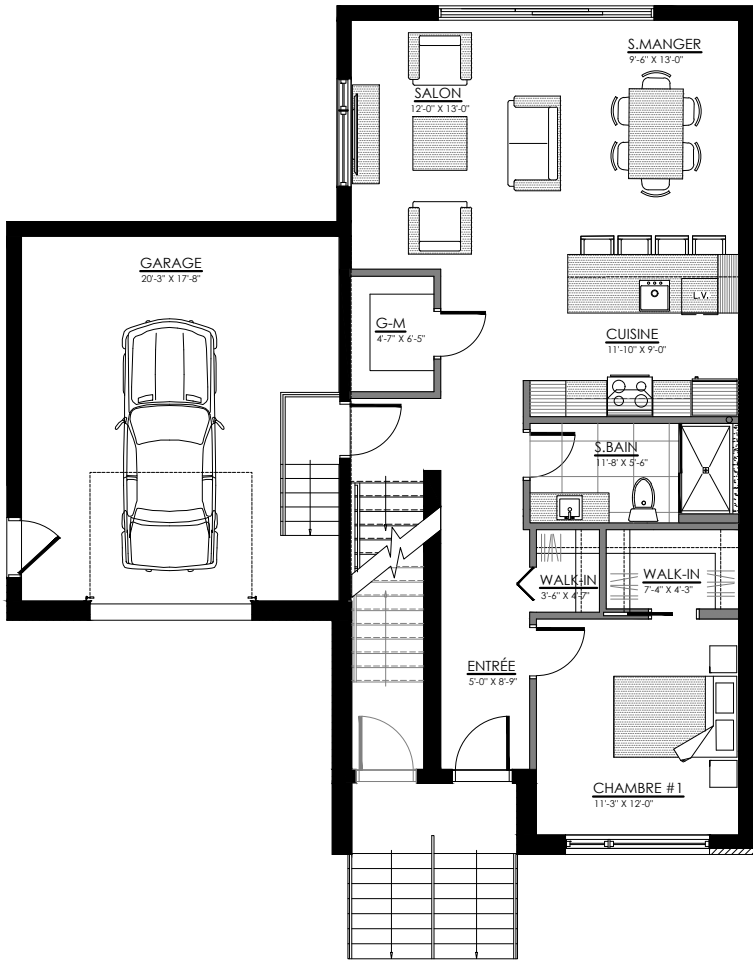


NIVEAU 2

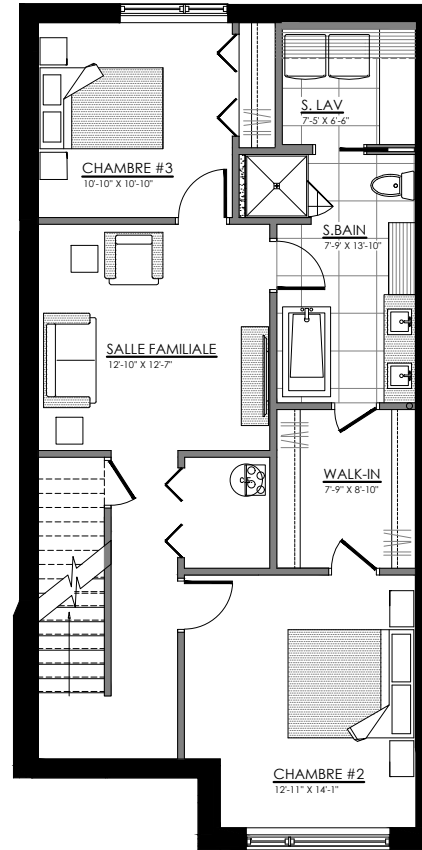


5 1/2 - LOGEMENT NIV. 1

SUPERFICIE HABITABLE: 1990 pi²
SUPERFICIE GARAGE: 410 pi²

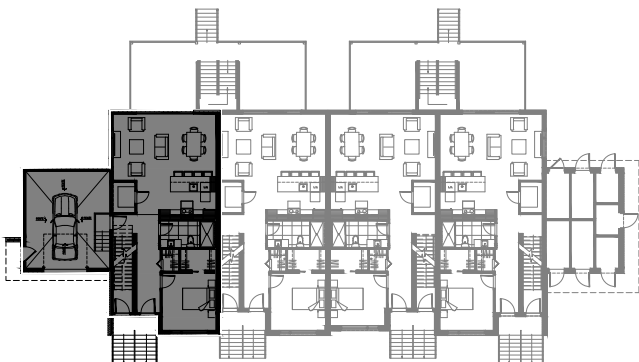


REZ-DE-CHAUSSÉE



SOUS-SOL

1599 Rue Calypso, Magog

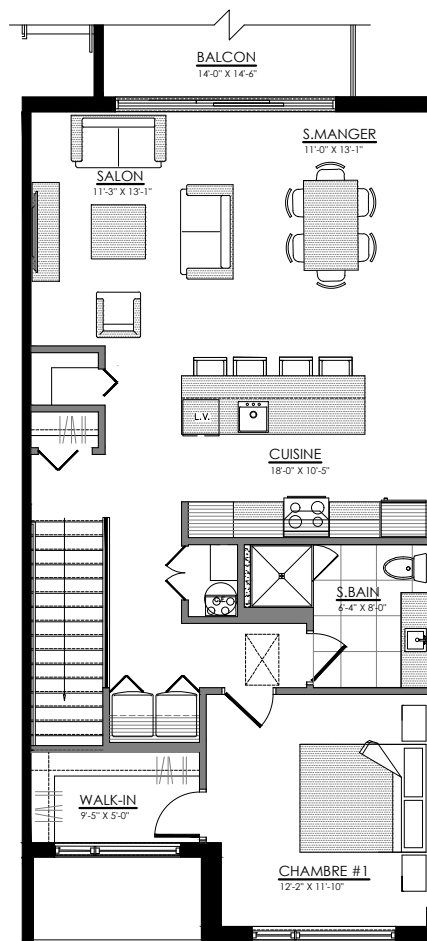


NIVEAU 1

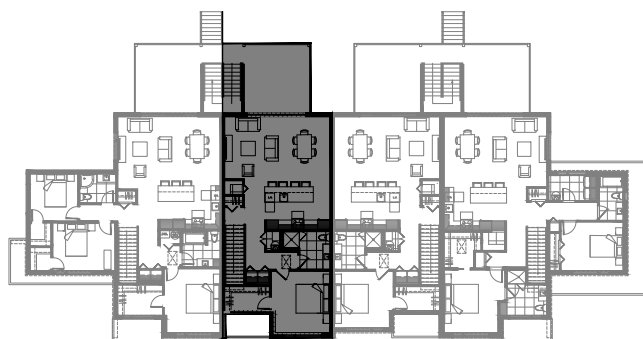


3 1/2 - LOGEMENT NIV. 2

SUPERFICIE HABITABLE: 1034 pi²



1601 Rue Calypso, Magog

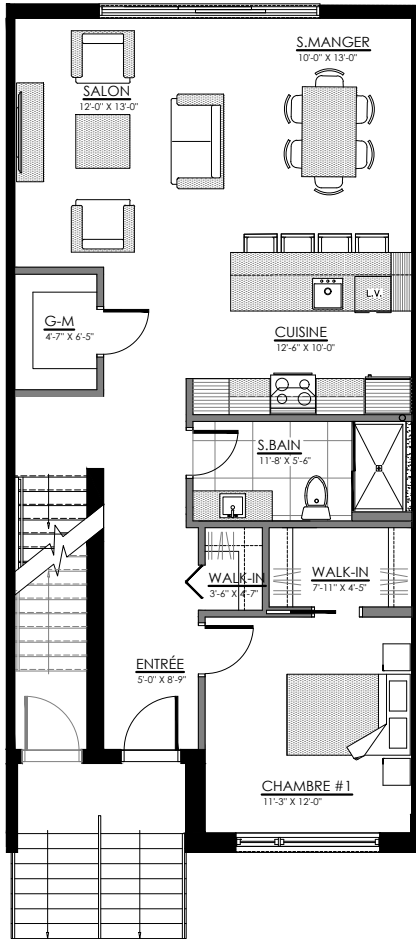


NIVEAU 2

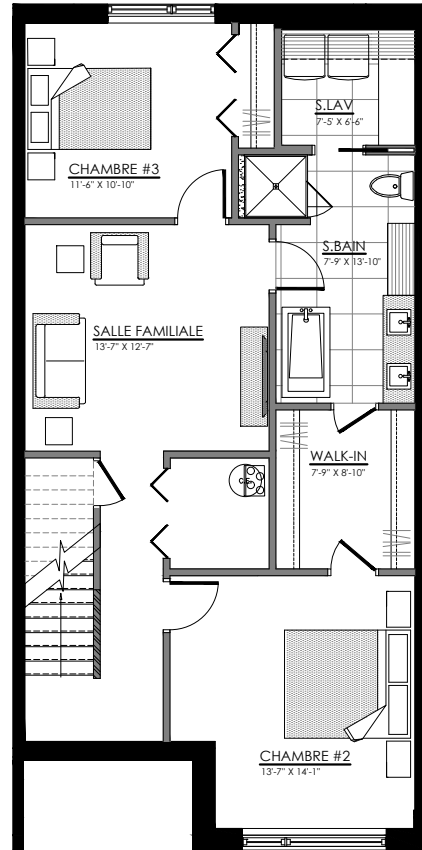


5 1/2 - LOGEMENT NIV. 1

SUPERFICIE HABITABLE: 1985 pi²

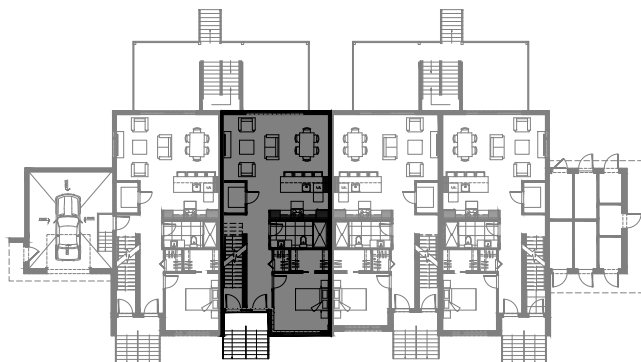


REZ-DE-CHAUSSÉE



SOUS-SOL

1603 Rue Calypso, Magog

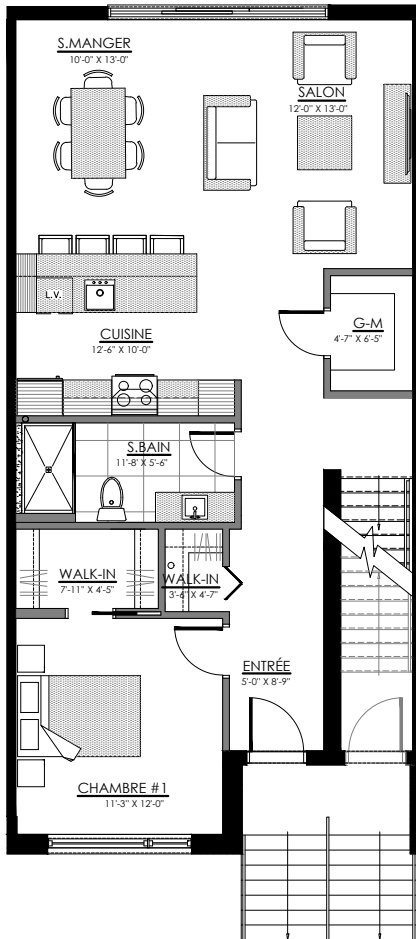


NIVEAU 1

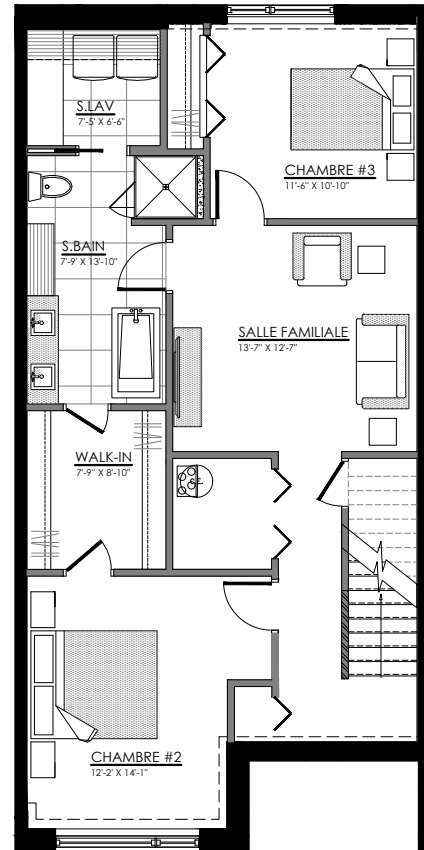


5 1/2 - LOGEMENT NIV. 1

SUPERFICIE HABITABLE: 1970 pi²

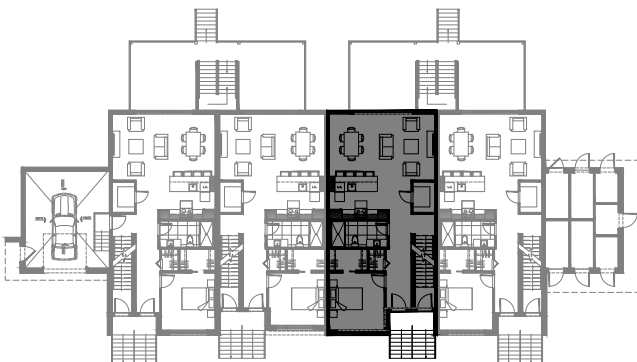


REZ-DE-CHAUSSÉE



SOUS-SOL

1605 Rue Calypso, Magog

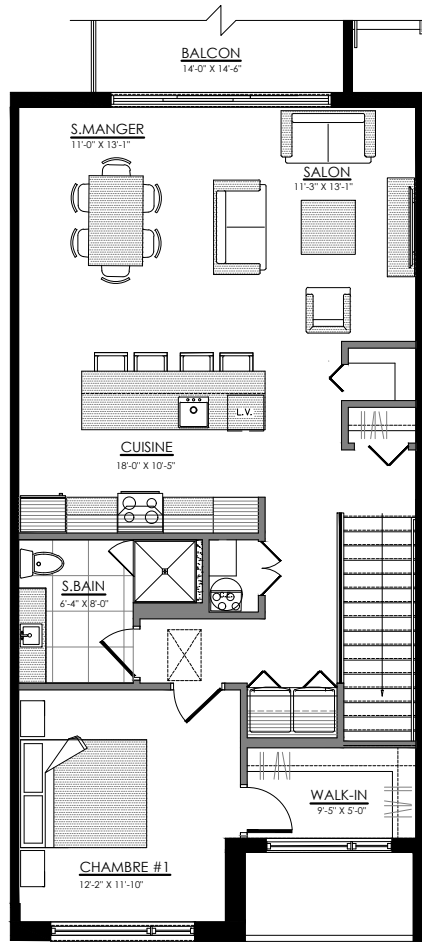


NIVEAU 1

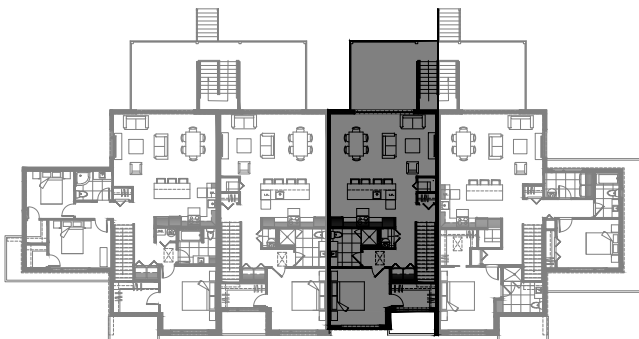


3 1/2 - LOGEMENT NIV. 2

SUPERFICIE HABITABLE: 1020 pi²



1607 Rue Calypso, Magog

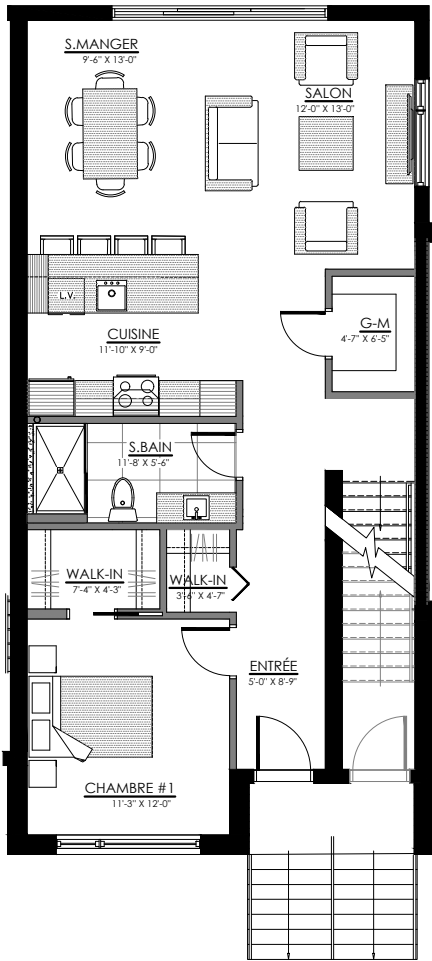


NIVEAU 2

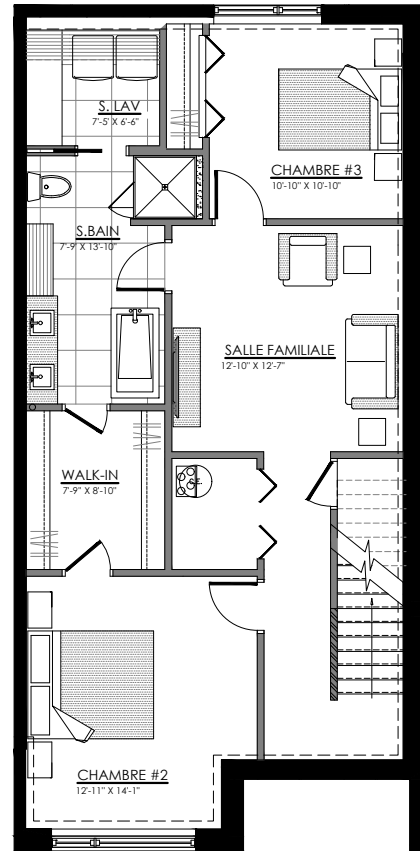


5 1/2 - LOGEMENT NIV. 1

SUPERFICIE HABITABLE: 1985 pi²

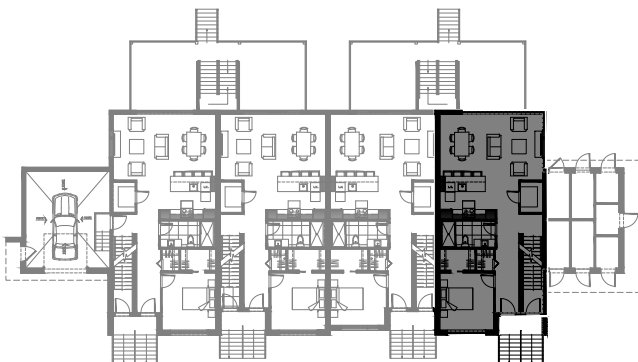


REZ-DE-CHAUSSÉE



SOUS-SOL

1609 Rue Calypso, Magog

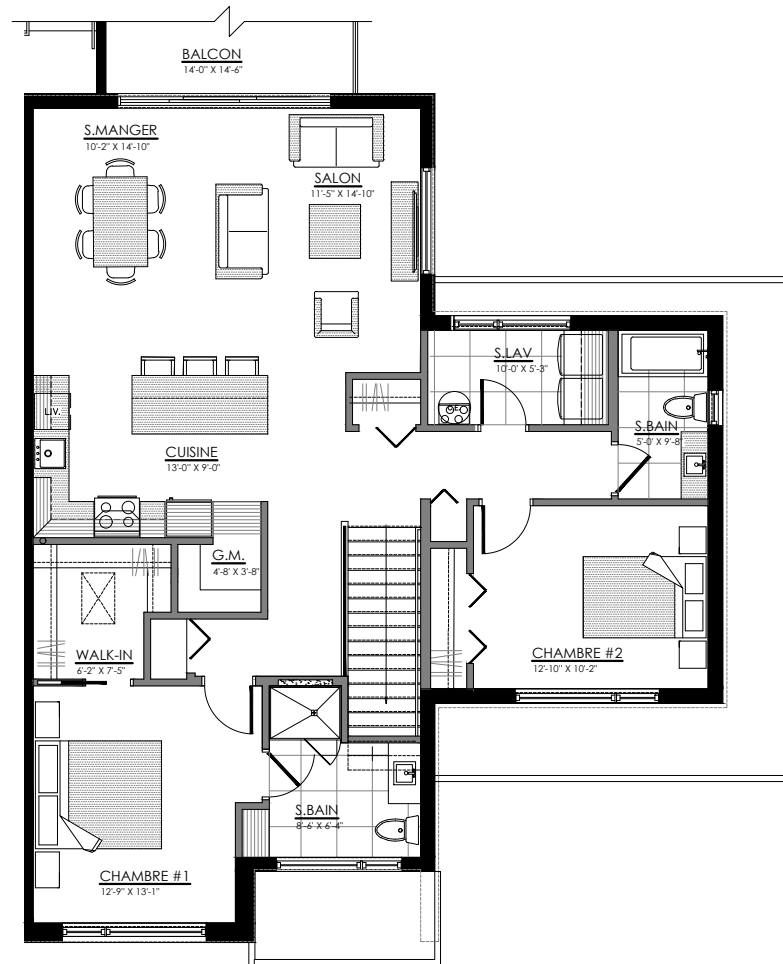


NIVEAU 1

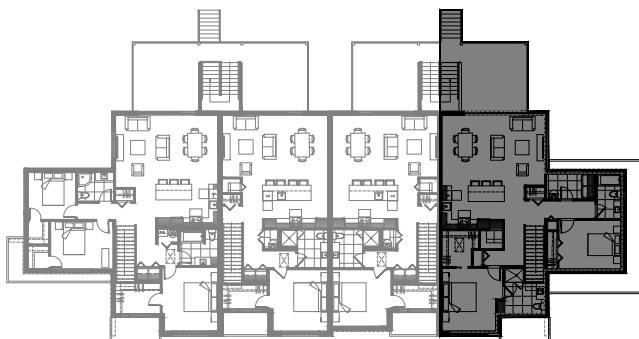


4 1/2 - LOGEMENT NIV. 2

SUPERFICIE HABITABLE: 1380 pi²



1611 Rue Calypso, Magog



NIVEAU 2

