

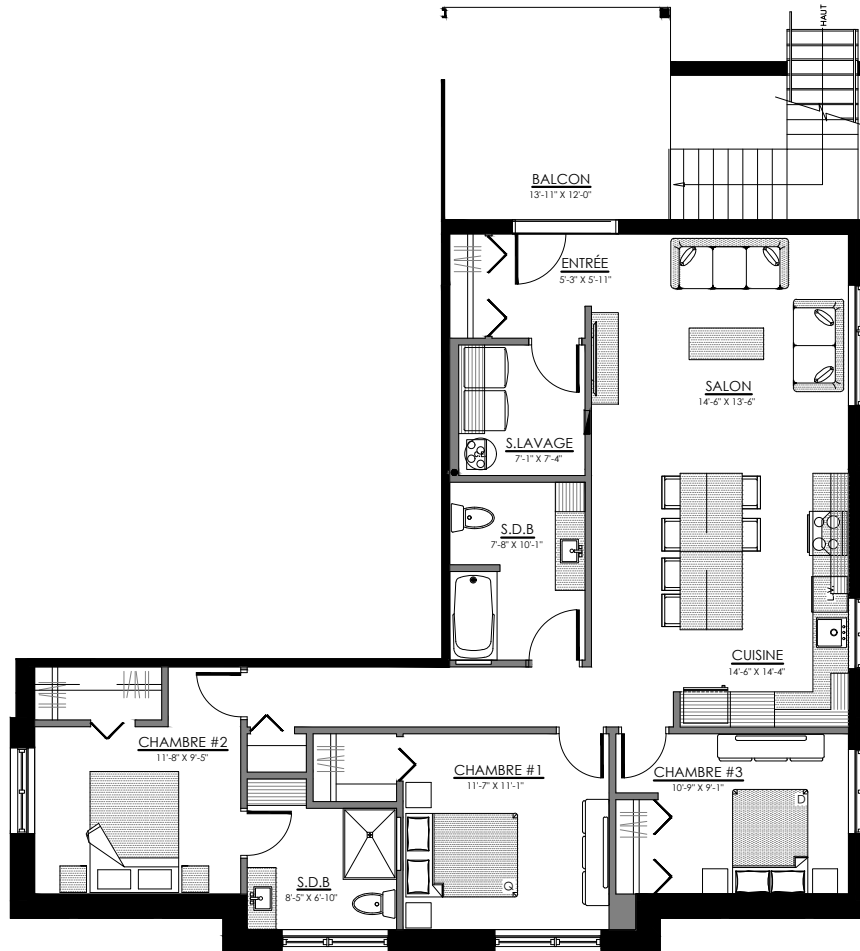


768 à 778 rue Wilfrid Lemoine, Sherbrooke

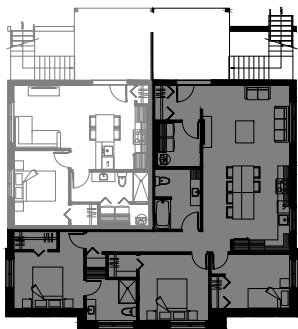
6 LOGEMENTS

5 1/2 - LOGEMENT - 770

SUPERFICIE TOTALE: 1355 pi²



770 rue Wilfrid Lemoine, Sherbrooke

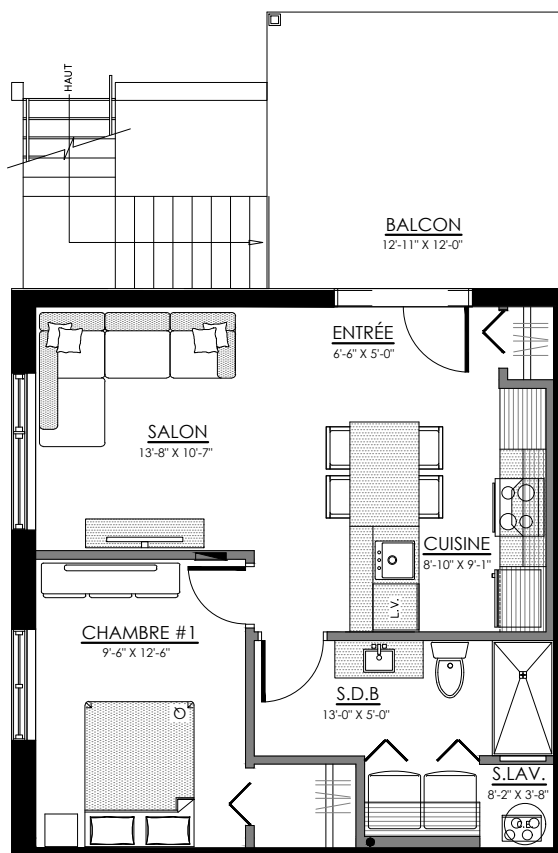


SOUS-SOL

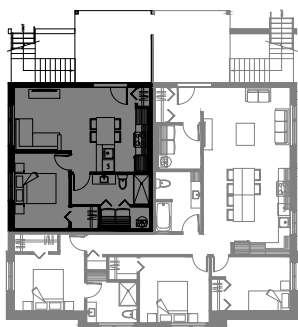


3 1/2 - LOGEMENT - 768

SUPERFICIE TOTALE: 595 pi²



768 rue Wilfrid Lemoine, Sherbrooke

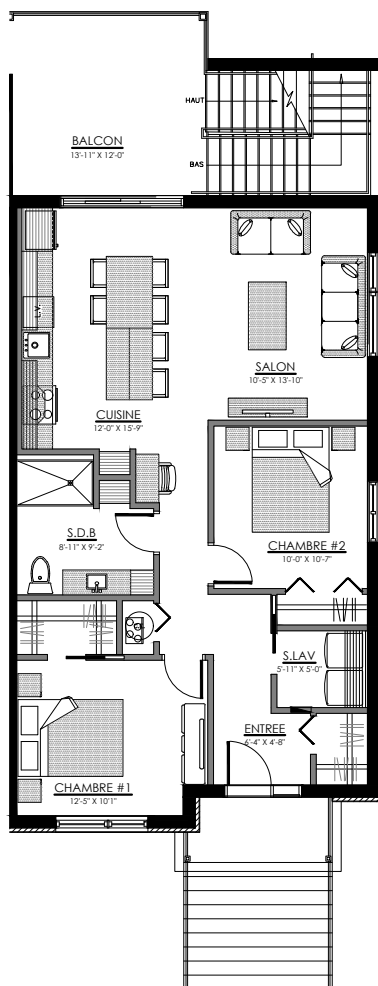


SOUS-SOL

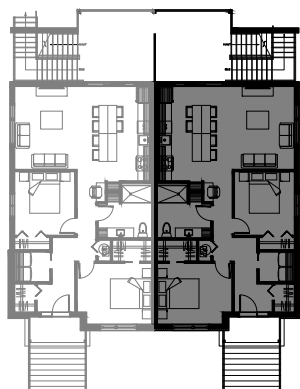


4 1/2 - LOGEMENT - 774

SUPERFICIE TOTALE: 975 pi²



774 rue Wilfrid Lemoine, Sherbrooke



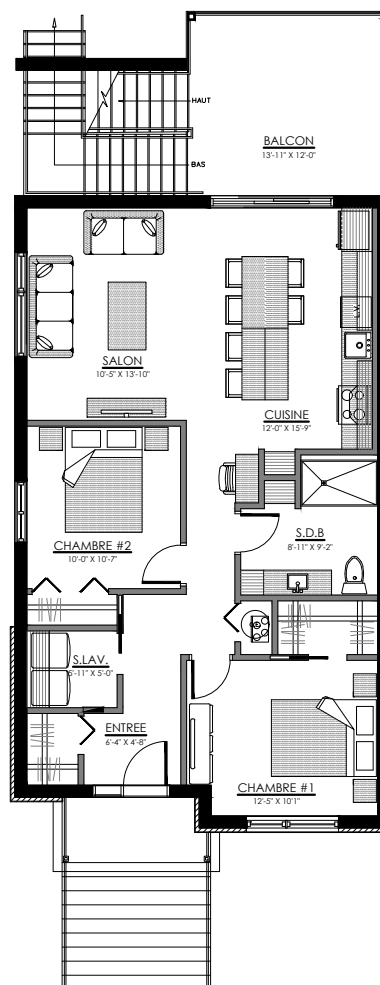
NIVEAU 1



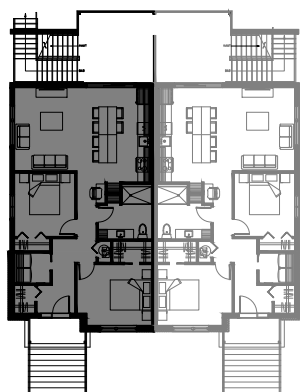
LACHANCE
construction résidentielle

4 1/2 - LOGEMENT - 772

SUPERFICIE TOTALE: 975 pi²



772 rue Wilfrid Lemoine, Sherbrooke

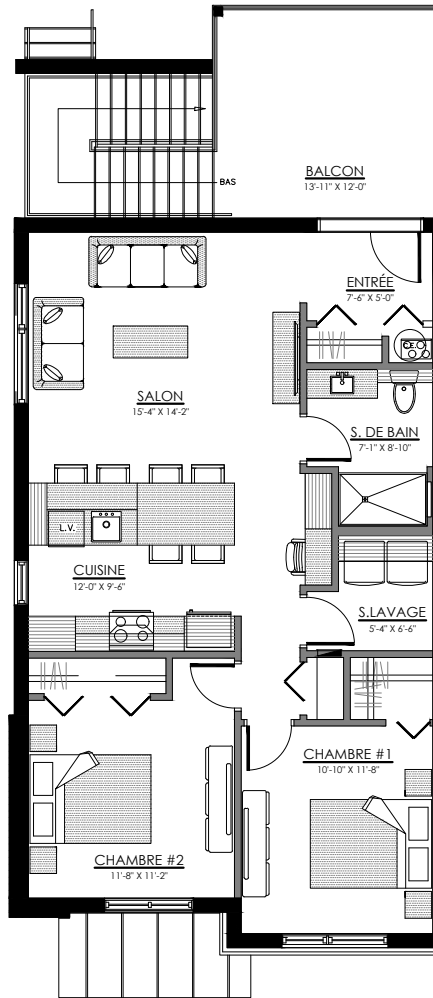


NIVEAU 1

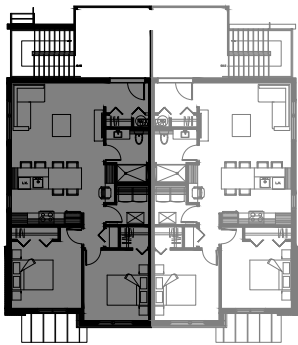


4 1/2 - LOGEMENT - 776

SUPERFICIE TOTALE: 975 pi²



776 rue Wilfrid Lemoine, Sherbrooke

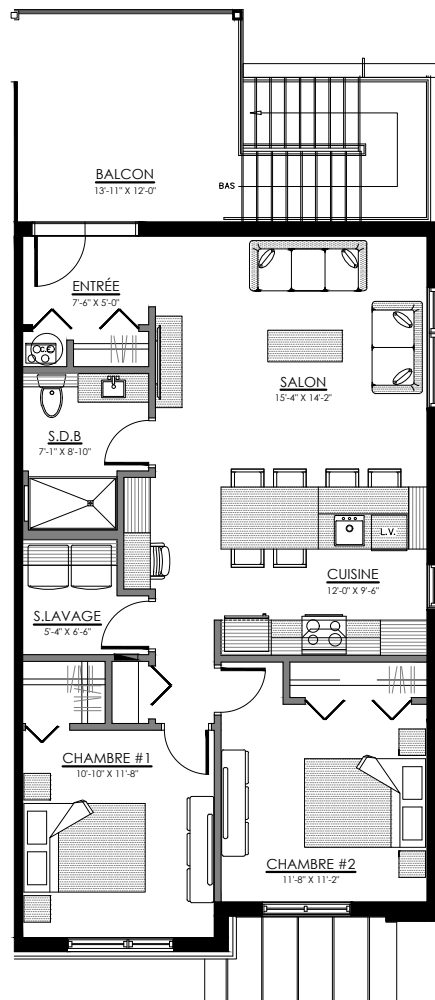


NIVEAU 2

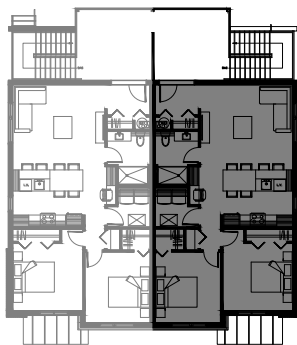


4 1/2 - LOGEMENT - 778

SUPERFICIE TOTALE: 975 pi²



778 rue Wilfrid Lemoine, Sherbrooke



NIVEAU 2


LACHANCE
construction résidentielle