

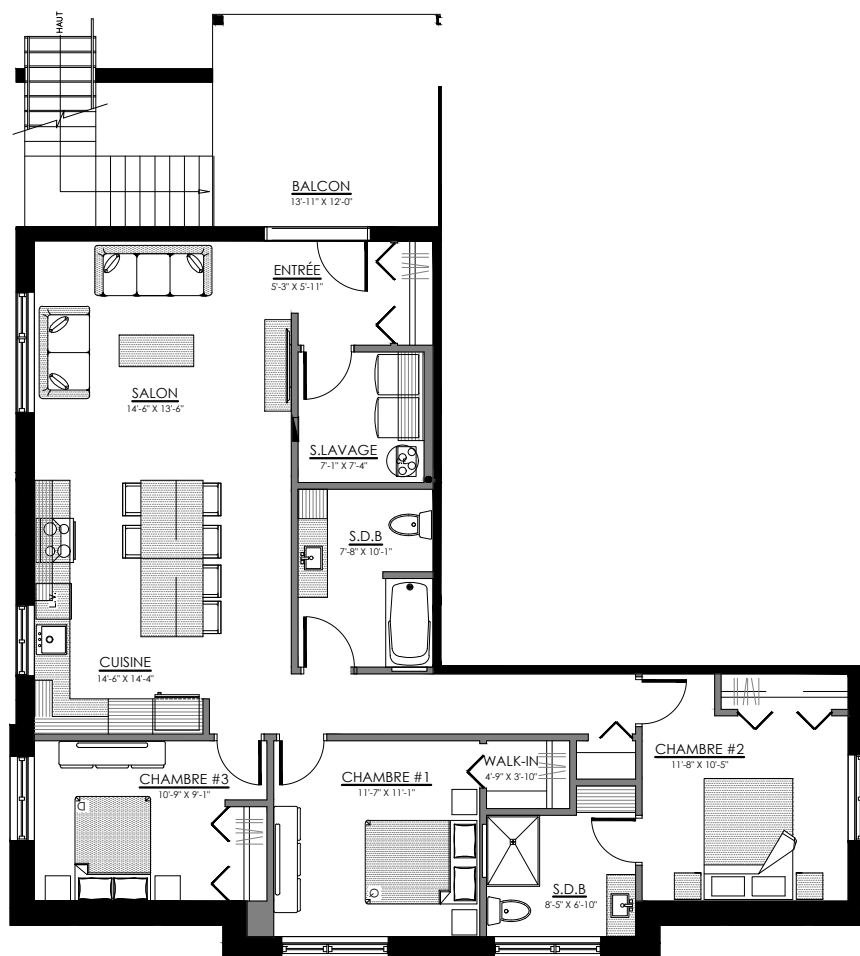


744 à 754 rue Wilfrid Lemoine, Sherbrooke

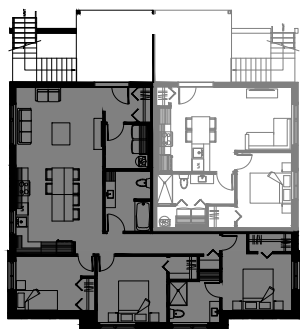
6 LOGEMENTS

5 1/2 - LOGEMENT - 744

SUPERFICIE TOTALE: 1355 pi²



744 rue Wilfrid Lemoine, Sherbrooke

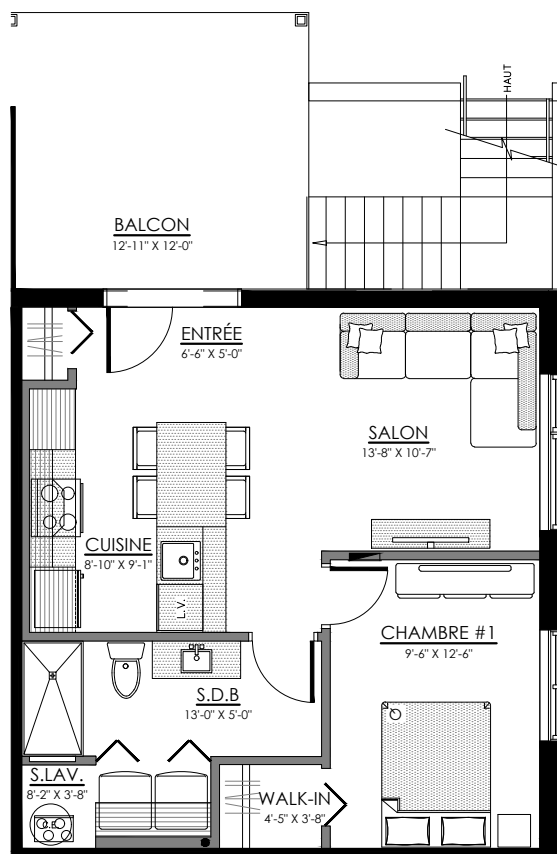


SOUS-SOL

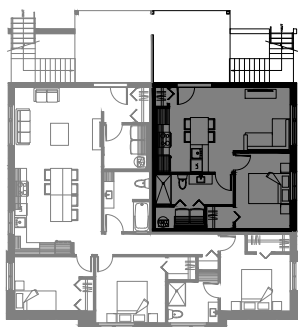


3 1/2 - LOGEMENT - 746

SUPERFICIE TOTALE: 595 pi²



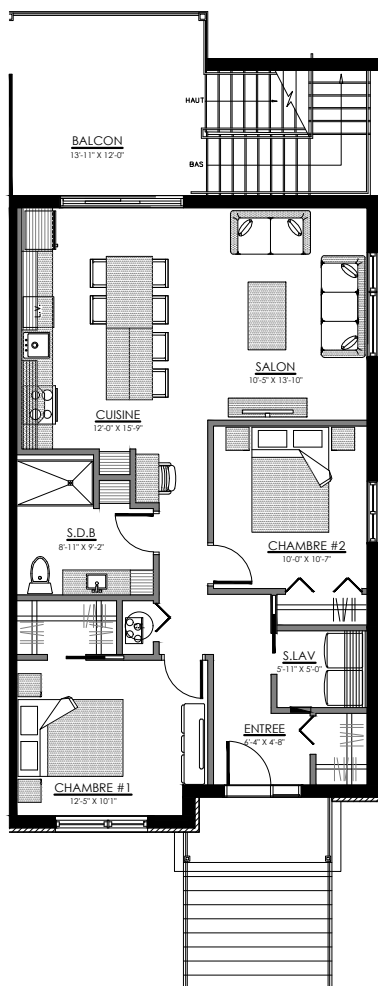
746 rue Wilfrid Lemoine, Sherbrooke



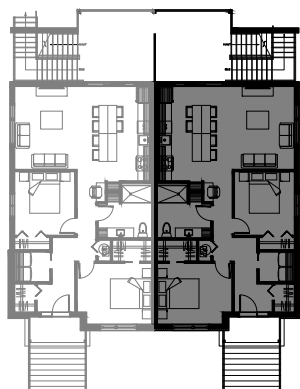
SOUS-SOL

4 1/2 - LOGEMENT - 750

SUPERFICIE TOTALE: 975 pi²



750 rue Wilfrid Lemoine, Sherbrooke

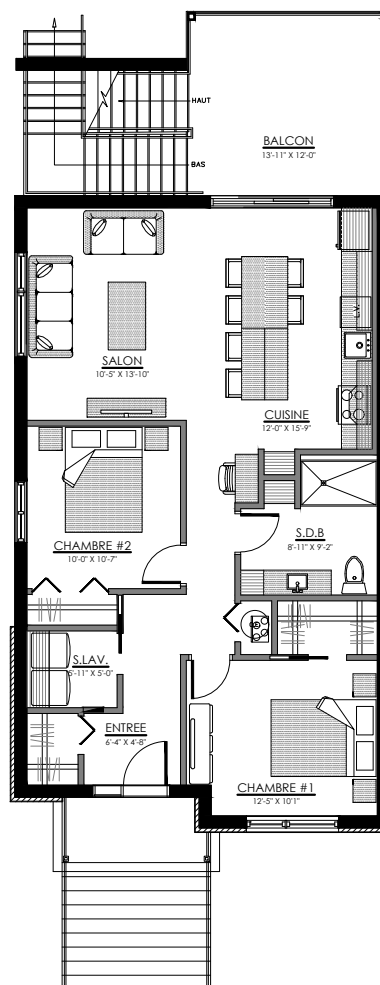


NIVEAU 1

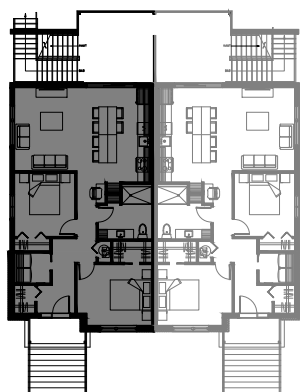


4 1/2 - LOGEMENT - 748

SUPERFICIE TOTALE: 975 pi²



748 rue Wilfrid Lemoine, Sherbrooke

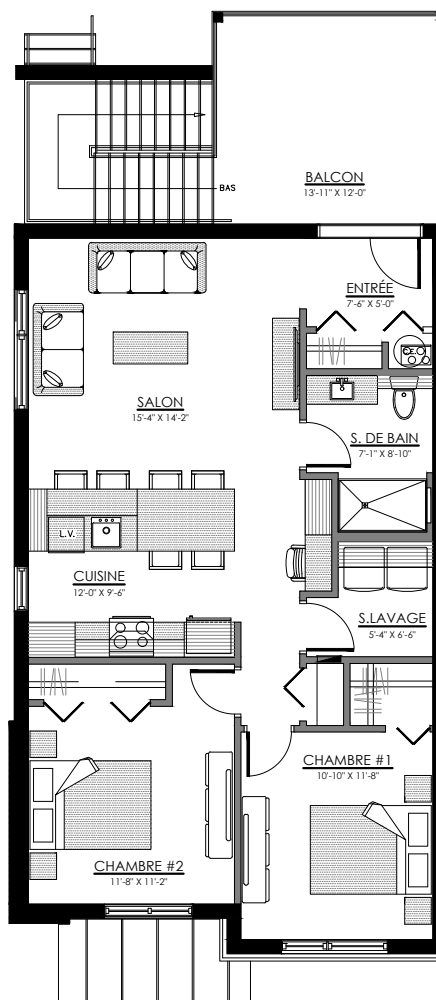


NIVEAU 1

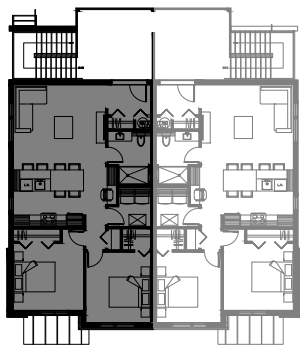

LACHANCE
construction résidentielle

4 1/2 - LOGEMENT - 752

SUPERFICIE TOTALE: 975 pi²



752 rue Wilfrid Lemoine, Sherbrooke



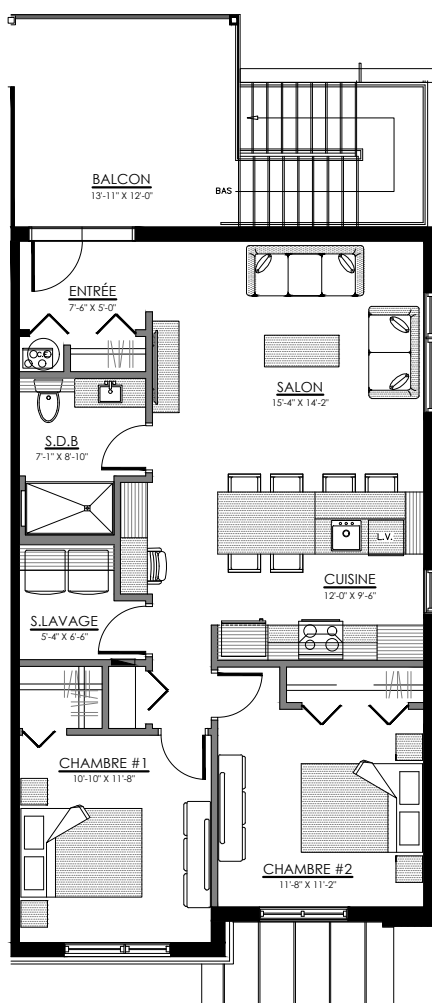
NIVEAU 2



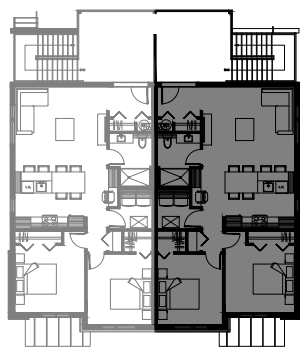
LACHANCE
construction résidentielle

4 1/2 - LOGEMENT - 754

SUPERFICIE TOTALE: 975 pi²



754 rue Wilfrid Lemoine, Sherbrooke



NIVEAU 2

