

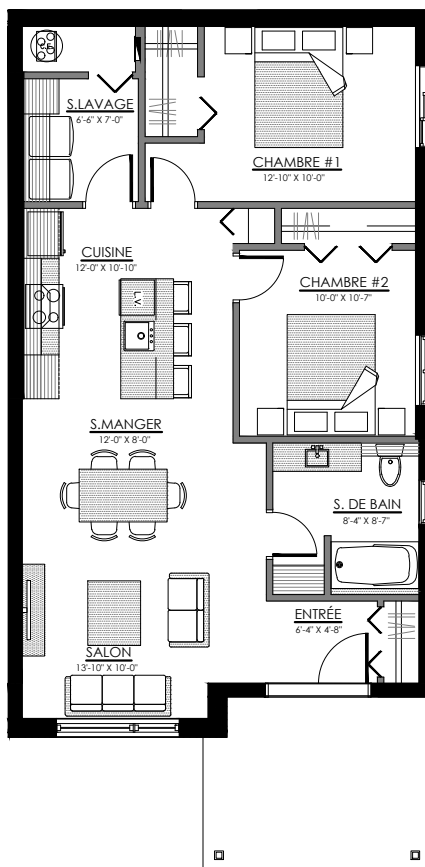


789 à 799 rue Wilfrid Lemoine, Sherbrooke

6 LOGEMENTS

4 1/2 - LOGEMENT - 789

SUPERFICIE TOTALE: 970 pi²



789 rue Wilfrid Lemoine, Sherbrooke

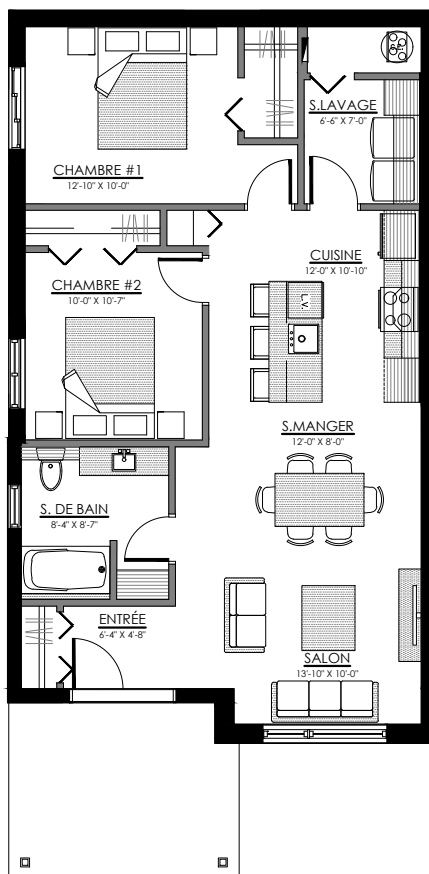


SOUS-SOL



4 1/2 - LOGEMENT - 791

SUPERFICIE TOTALE: 970 pi²



791 rue Wilfrid Lemoine, Sherbrooke

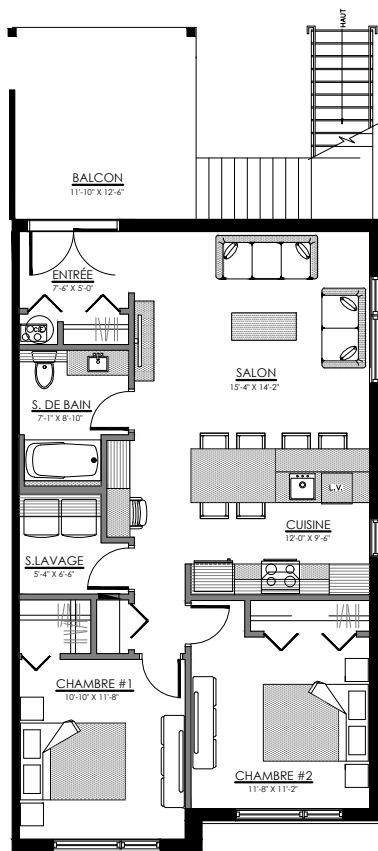


SOUS-SOL

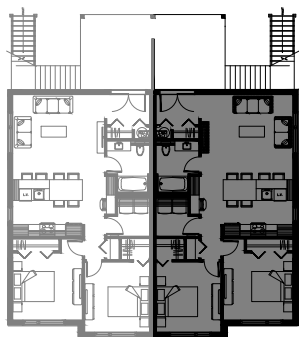


4 1/2 - LOGEMENT - 793

SUPERFICIE TOTALE: 970 pi²



793 rue Wilfrid Lemoine, Sherbrooke



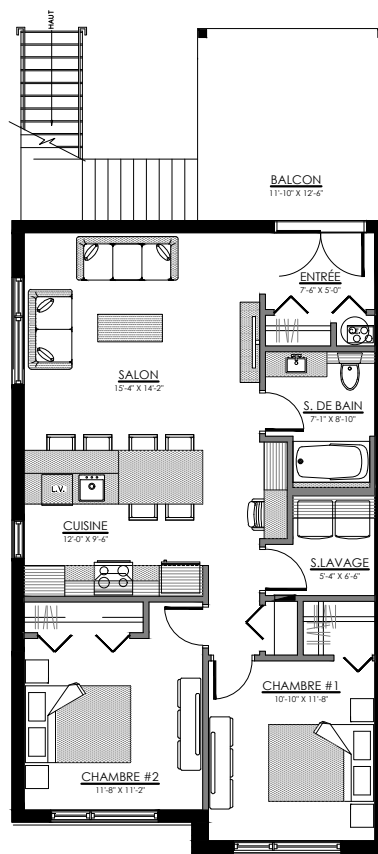
NIVEAU 1



LACHANCE
construction résidentielle

4 1/2 - LOGEMENT - 795

SUPERFICIE TOTALE: 970 pi²



795 rue Wilfrid Lemoine, Sherbrooke

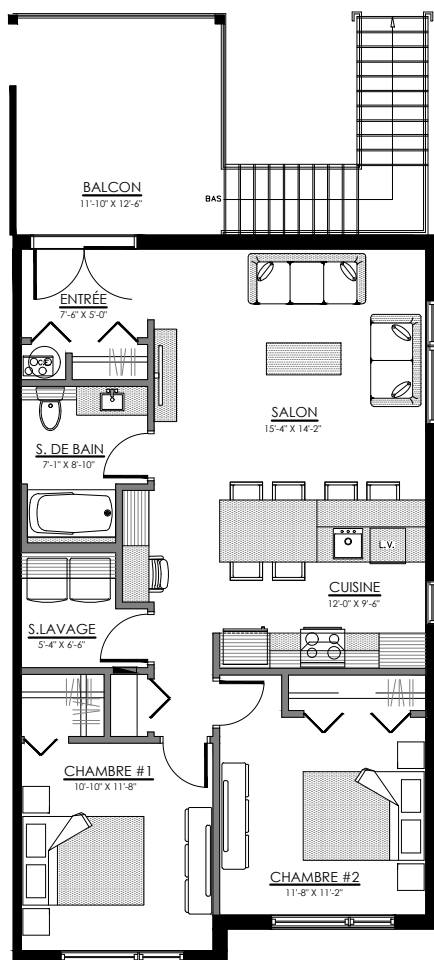


NIVEAU 1

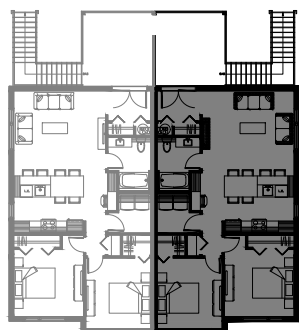


4 1/2 - LOGEMENT - 797

SUPERFICIE TOTALE: 970 pi²



797 rue Wilfrid Lemoine, Sherbrooke

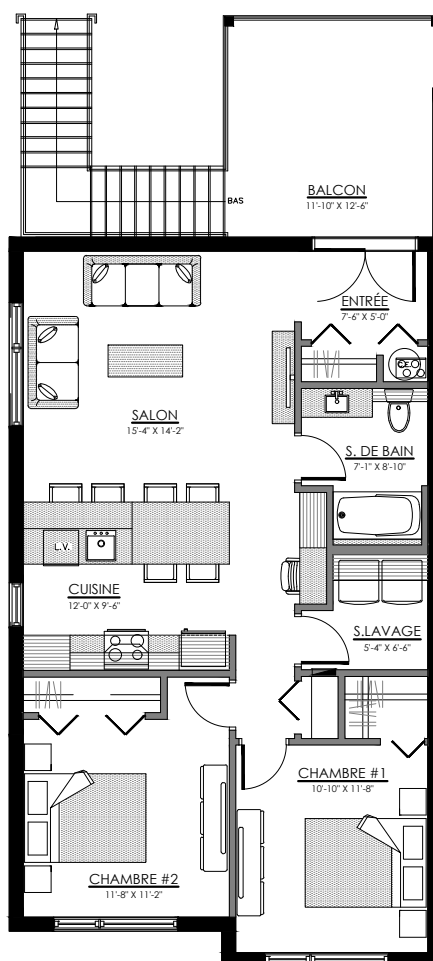


NIVEAU 2



4 1/2 - LOGEMENT - 799

SUPERFICIE TOTALE: 970 pi²



799 rue Wilfrid Lemoine, Sherbrooke



NIVEAU 2

