



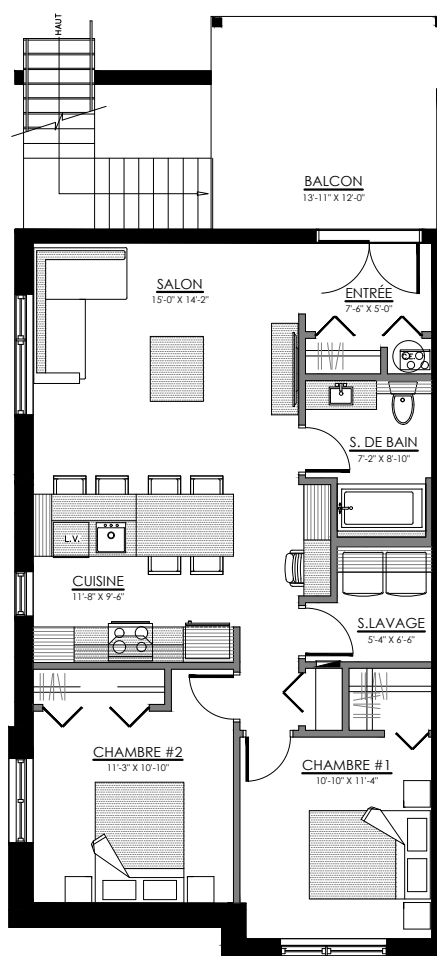
790 à 800 rue Wilfrid Lemoine, Sherbrooke

---

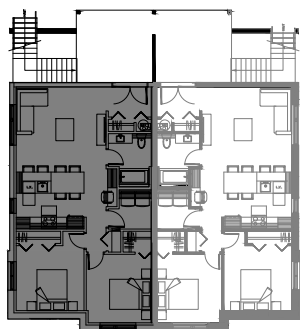
6 LOGEMENTS

# 4 1/2 - LOGEMENT - 790

SUPERFICIE TOTALE: 975 pi<sup>2</sup>



790 rue Wilfrid Lemoine, Sherbrooke

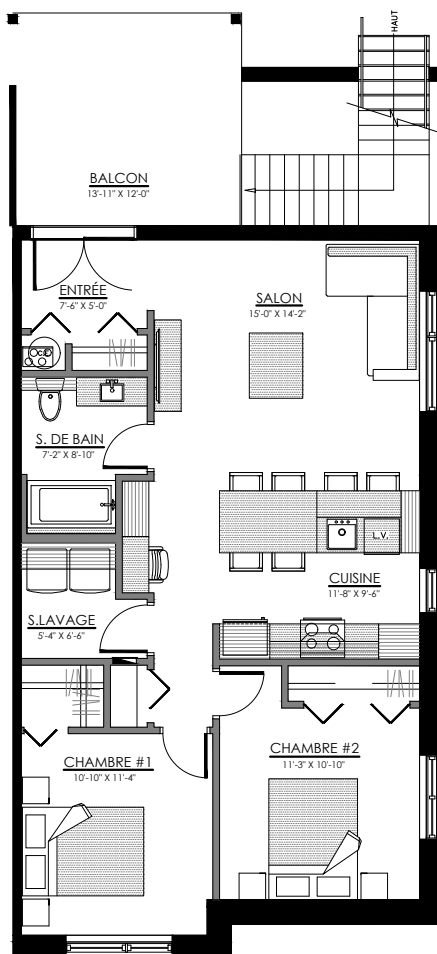


SOUS-SOL

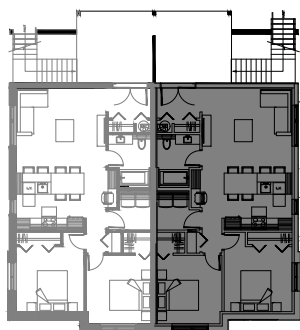


# 4 1/2 - LOGEMENT - 792

SUPERFICIE TOTALE: 975 pi<sup>2</sup>



792 rue Wilfrid Lemoine, Sherbrooke

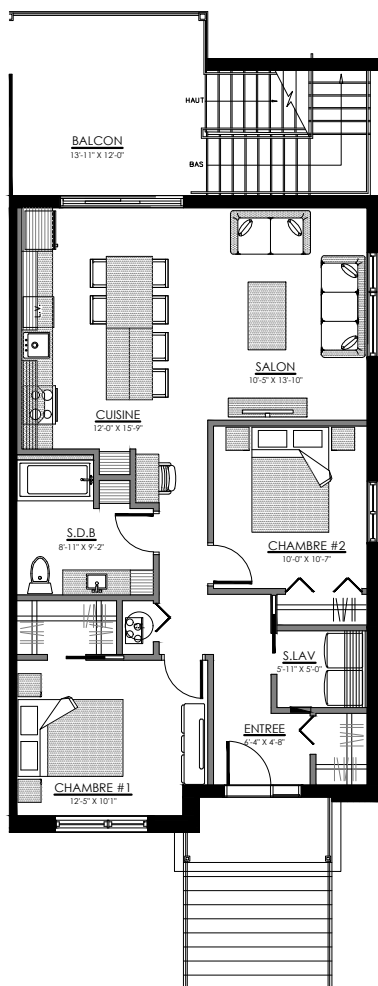


SOUS-SOL

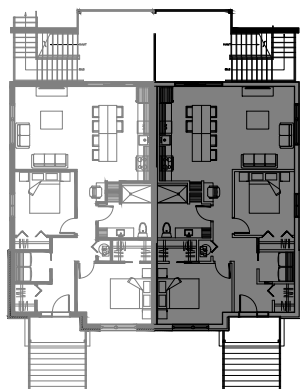


# 4 1/2 - LOGEMENT - 796

SUPERFICIE TOTALE: 975 pi<sup>2</sup>



796 rue Wilfrid Lemoine, Sherbrooke

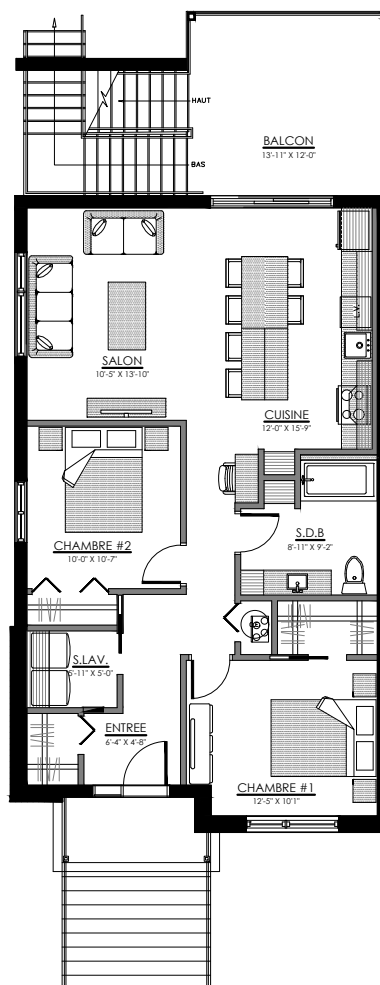


NIVEAU 1

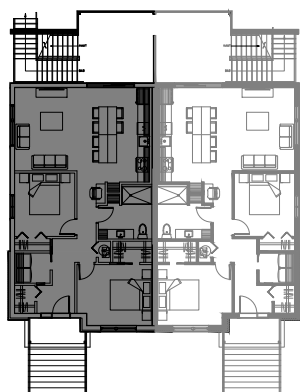


# 4 1/2 - LOGEMENT - 794

SUPERFICIE TOTALE: 975 pi<sup>2</sup>



794 rue Wilfrid Lemoine, Sherbrooke



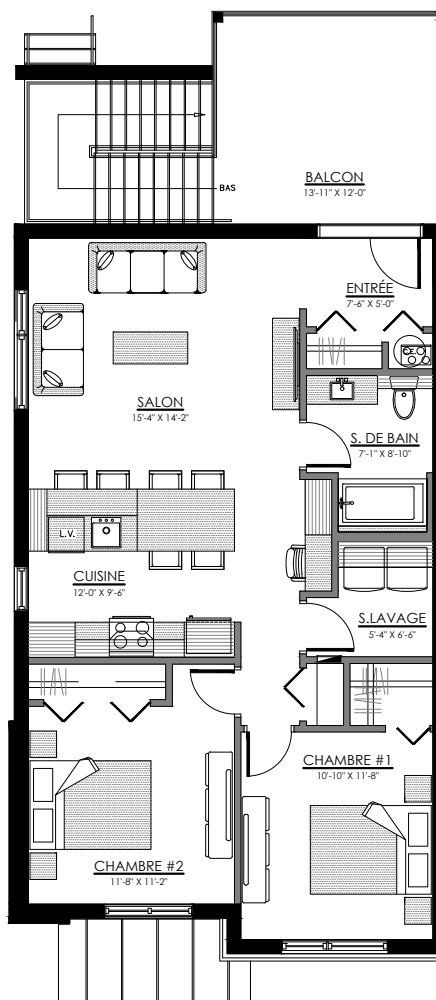
NIVEAU 1



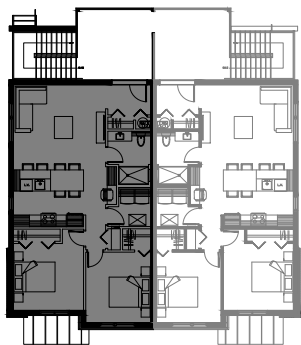
**LACHANCE**  
construction résidentielle

# 4 1/2 - LOGEMENT - 798

SUPERFICIE TOTALE: 975 pi<sup>2</sup>



798 rue Wilfrid Lemoine, Sherbrooke



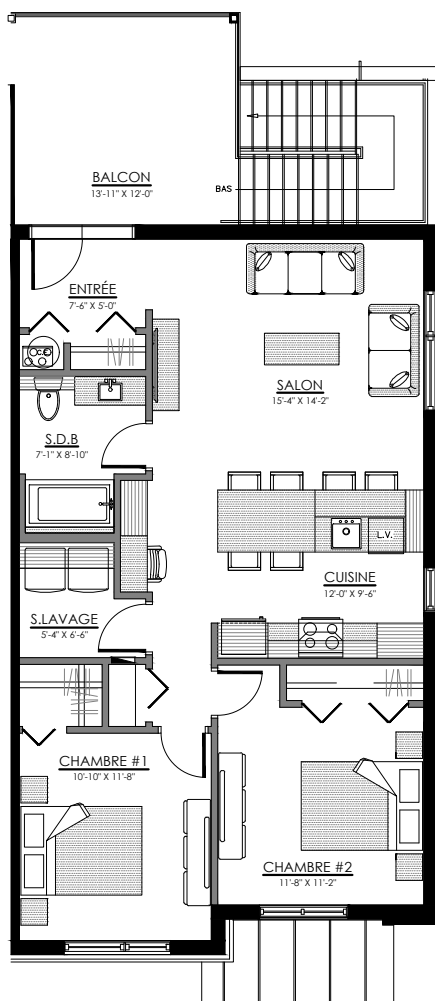
NIVEAU 2



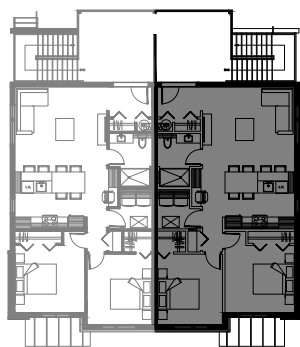
**LACHANCE**  
construction résidentielle

# 4 1/2 - LOGEMENT - 800

SUPERFICIE TOTALE: 975 pi<sup>2</sup>



800 rue Wilfrid Lemoine, Sherbrooke



NIVEAU 2



**LACHANCE**  
construction résidentielle