

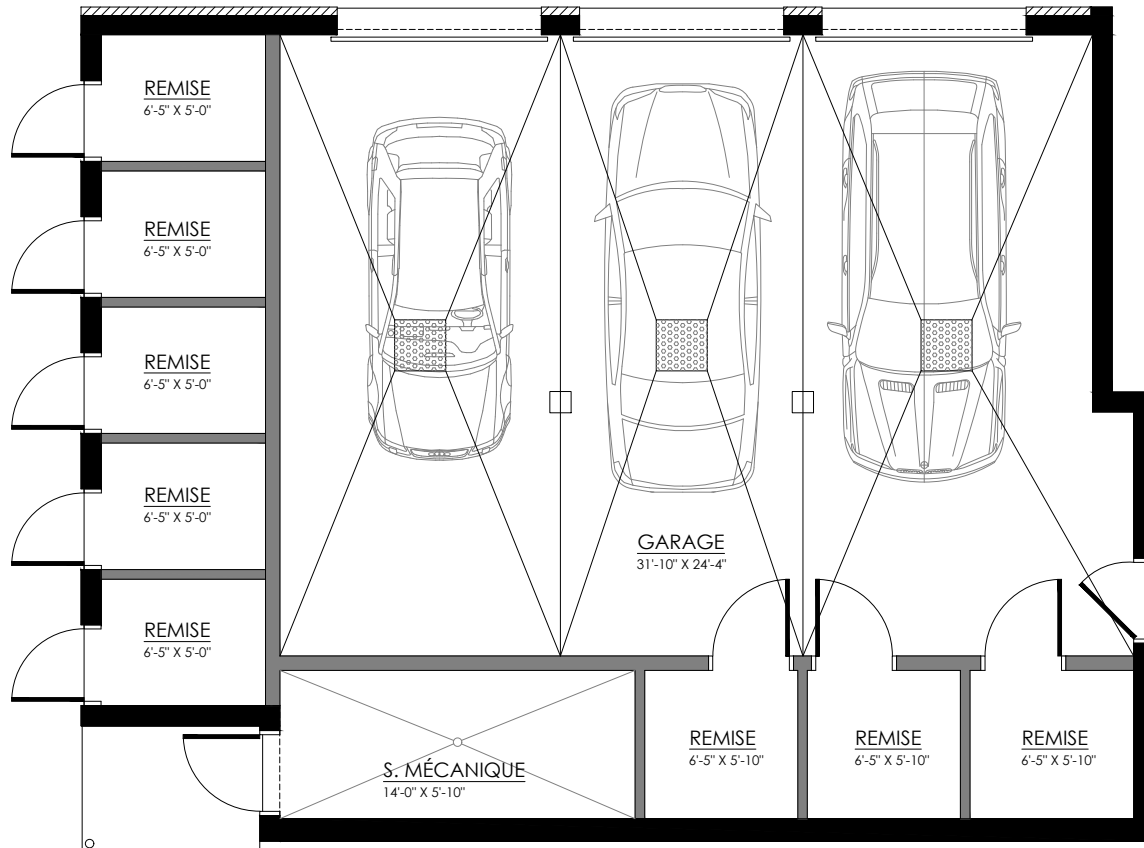


5545 Blvd René-Lévesque, Sherbrooke

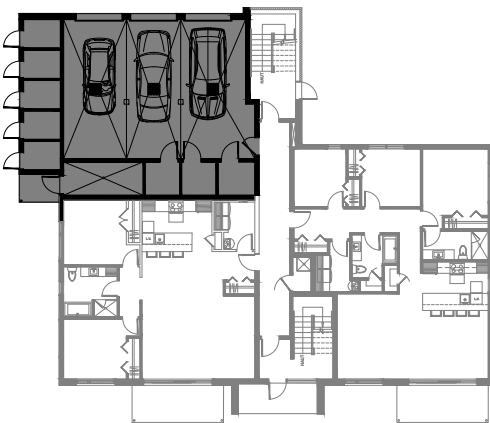
8 LOGEMENTS

GARAGES & REMISES

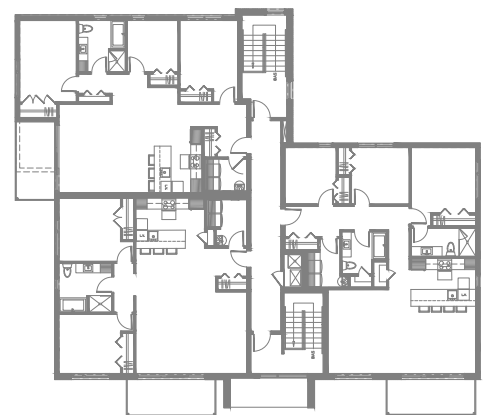
SUPERFICIE TOTALE: 1317 pi²



5545 Blvd René-Lévesque, Sherbrooke



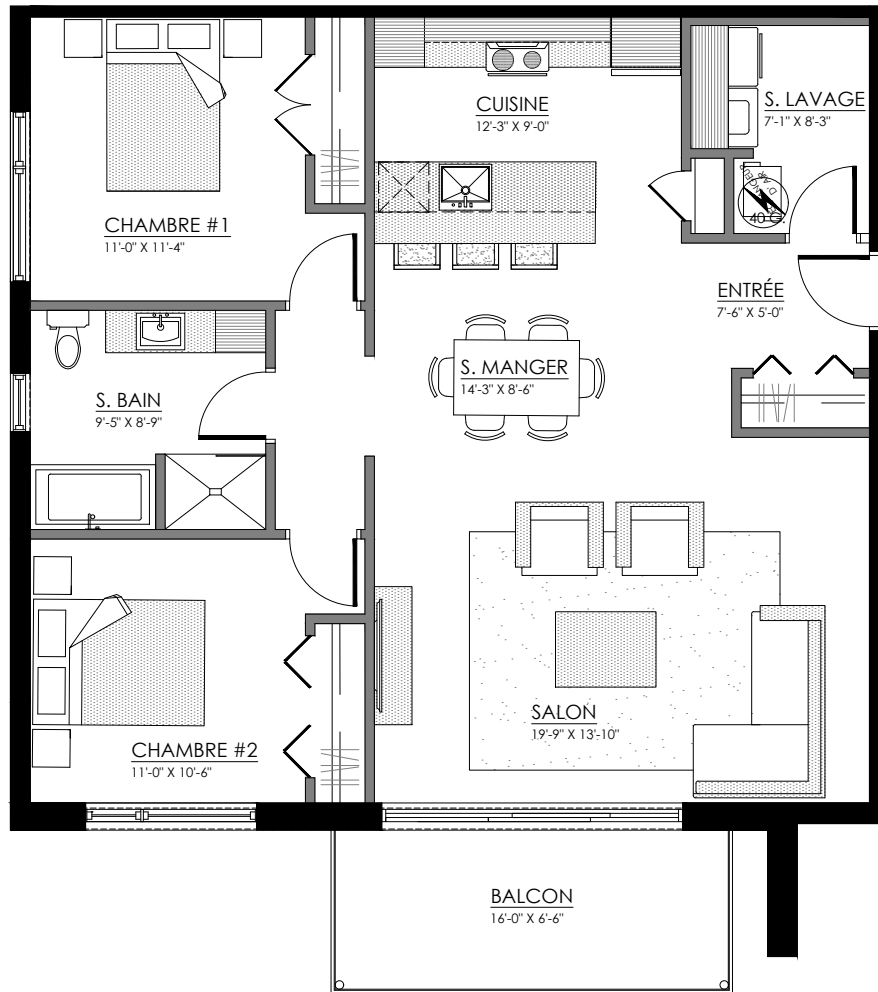
REZ-DE-CHAUSSÉE



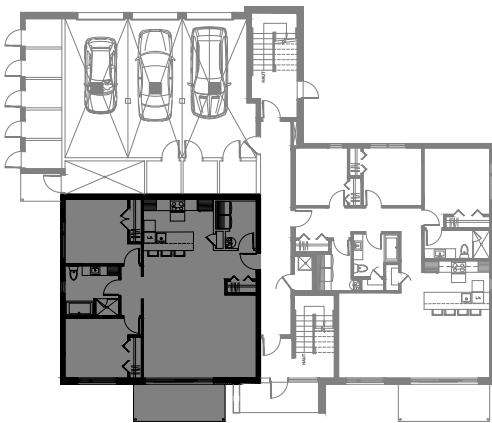
ÉTAGE 1 et 2

4½ - LOGEMENTS 101-201-301

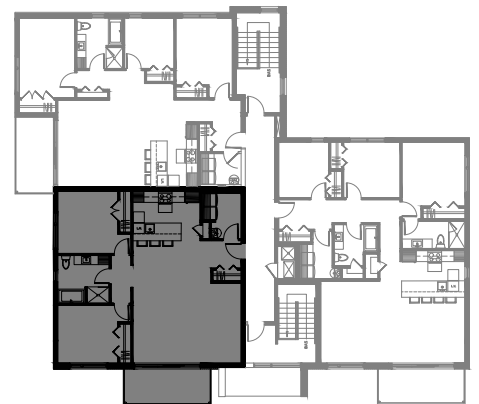
SUPERFICIE TOTALE: 1150 pi²



5545 Blvd René-Lévesque, Sherbrooke



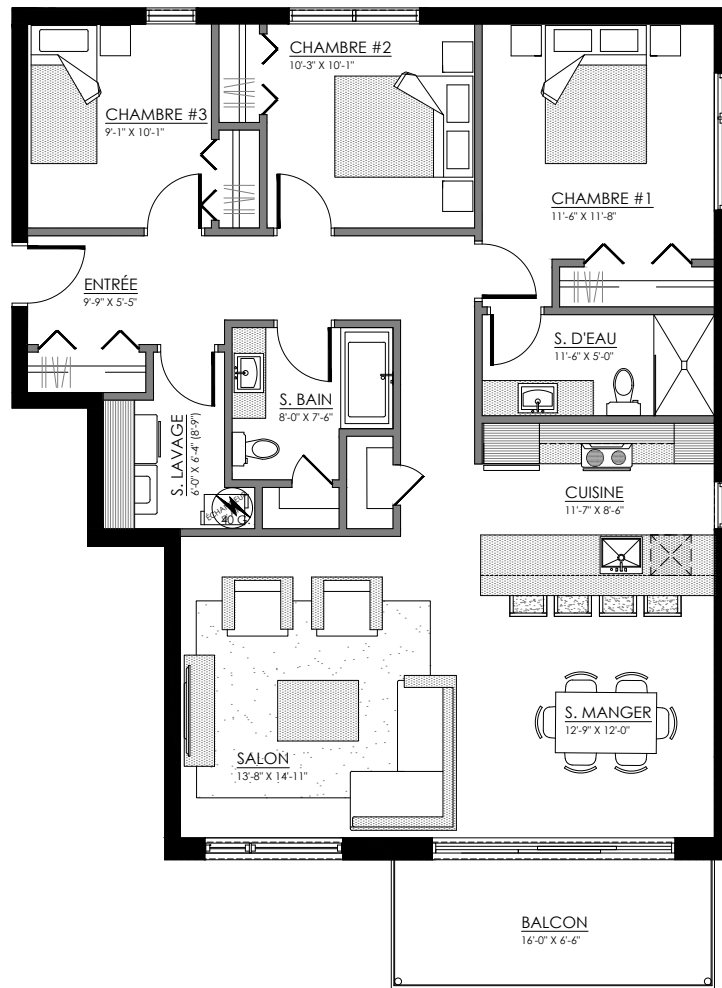
REZ-DE-CHAUSSÉE



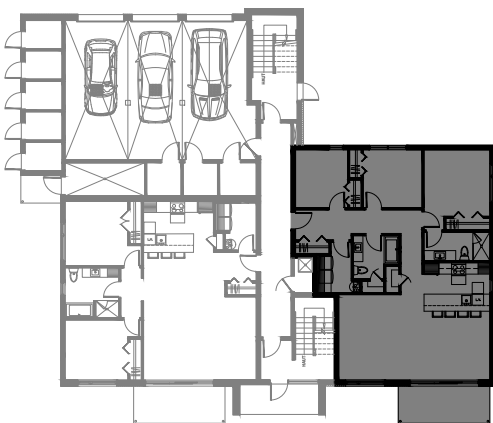
ÉTAGE 1 et 2

5½ - LOGEMENTS 102-202-302

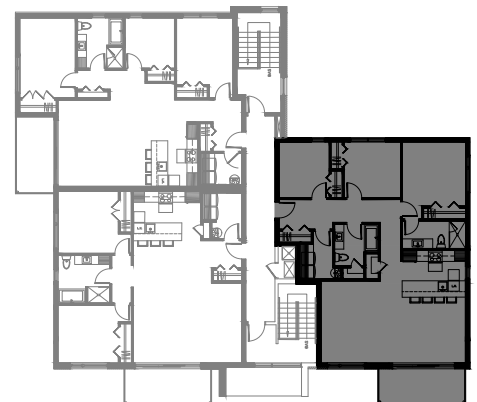
SUPERFICIE TOTALE: 1353 pi²



5545 Blvd René-Lévesque, Sherbrooke



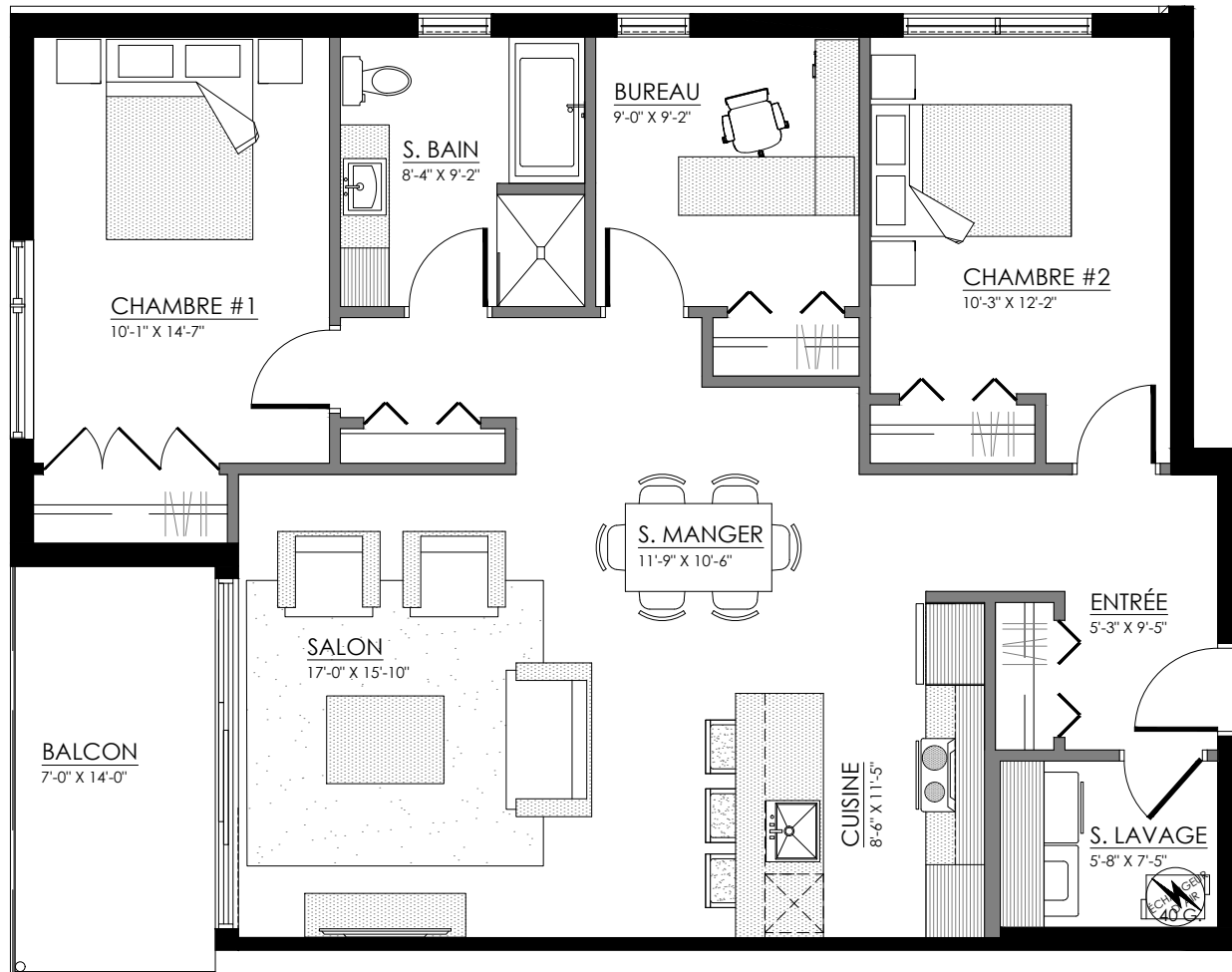
REZ-DE-CHAUSSÉE



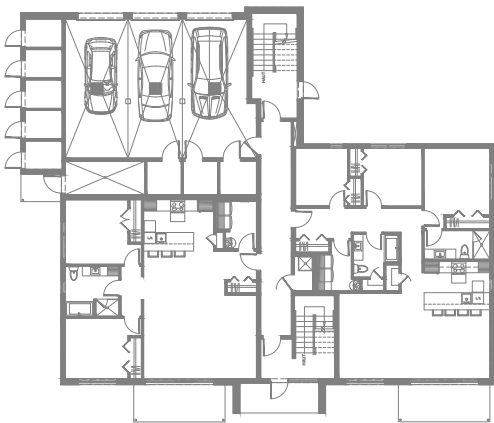
ÉTAGE 1 et 2

5½ - LOGEMENTS 203-303

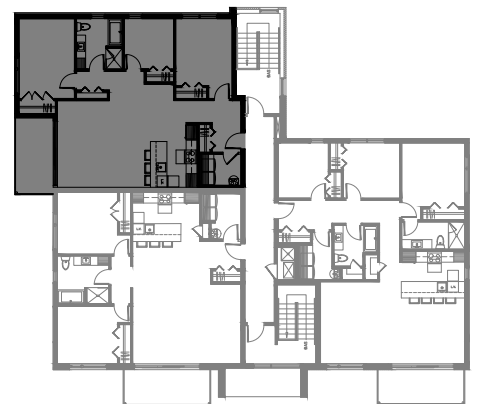
SUPERFICIE TOTALE: 1240 pi²



5545 Blvd René-Lévesque, Sherbrooke



REZ-DE-CHAUSSÉE



ÉTAGE 1 et 2