



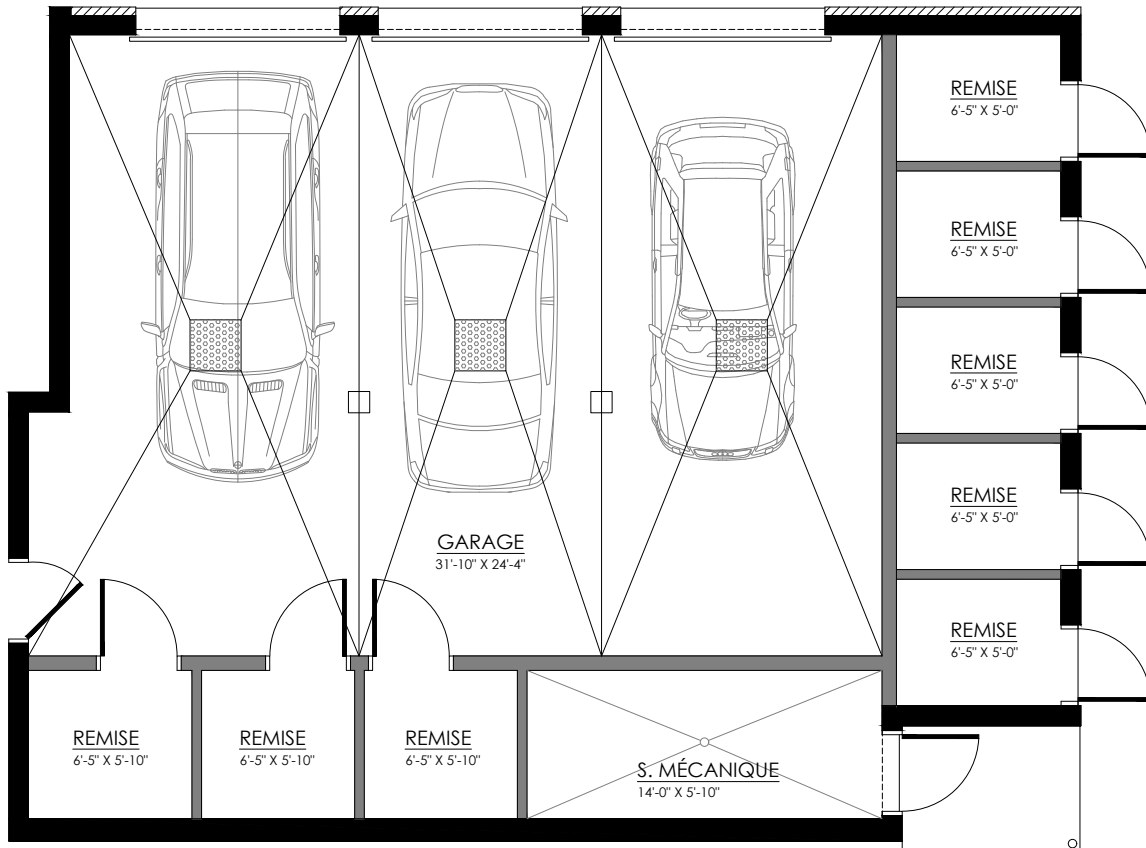
5529 Blvd René-Lévesque, Sherbrooke

---

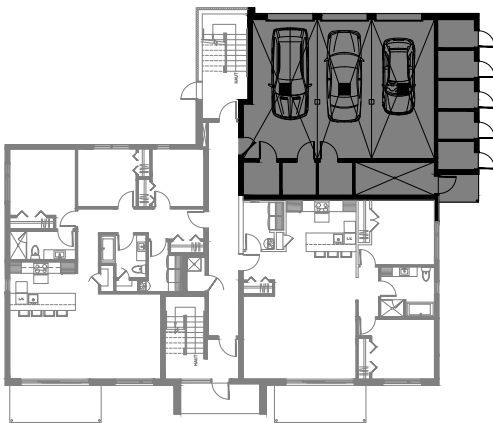
8 LOGEMENTS

# GARAGES & REMISES

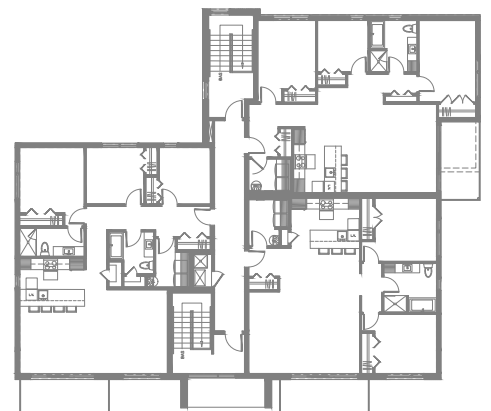
SUPERFICIE TOTALE: 1317 pi<sup>2</sup>



5529 Blvd René-Lévesque, Sherbrooke



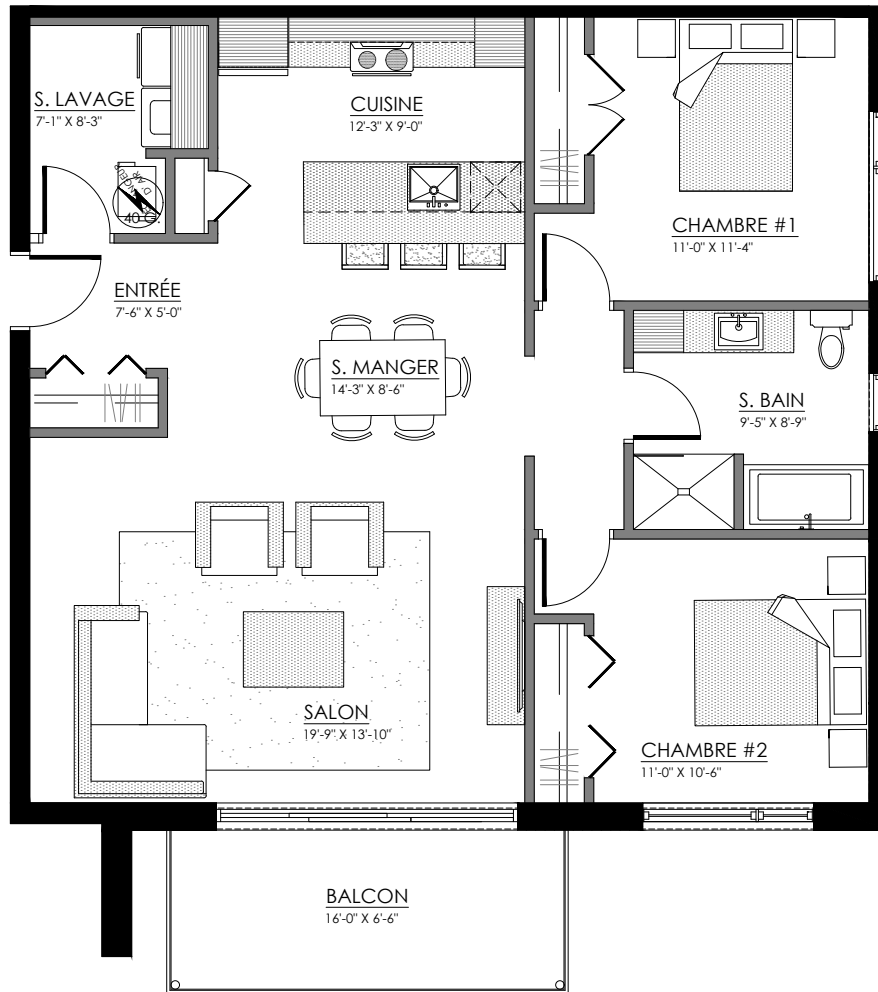
REZ-DE-CHAUSSÉE



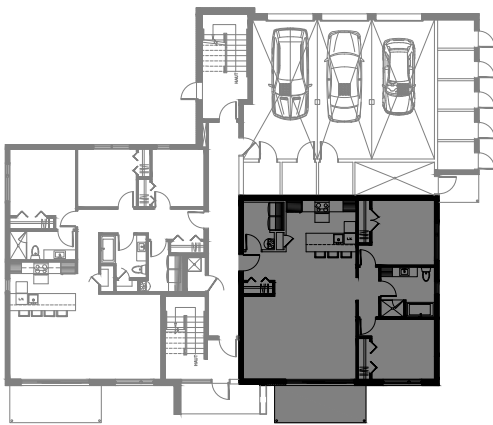
ÉTAGE 1 et 2

# 4½ - LOGEMENTS 101-201-301

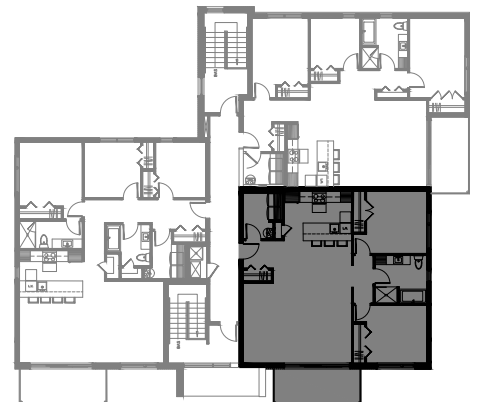
SUPERFICIE TOTALE: 1150 pi<sup>2</sup>



5529 Blvd René-Lévesque, Sherbrooke



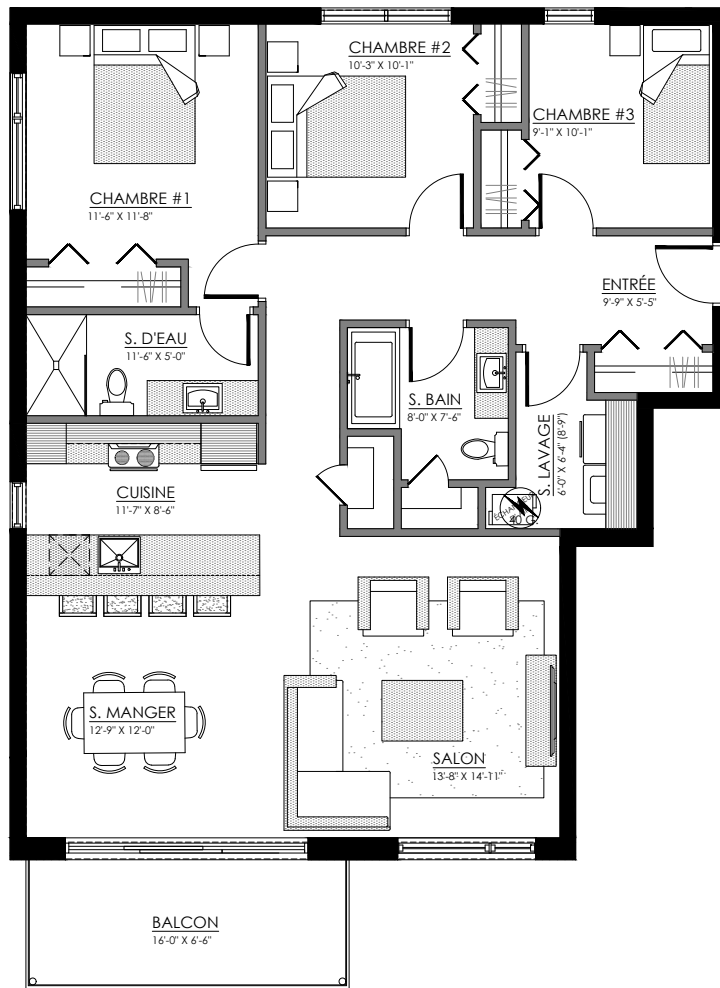
REZ-DE-CHAUSSÉE



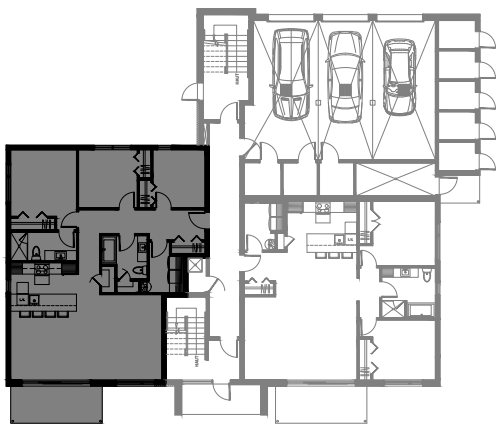
ÉTAGE 1 et 2

# 5½ - LOGEMENTS 102-202-302

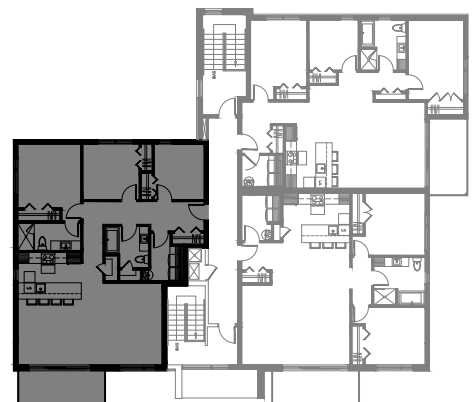
SUPERFICIE TOTALE: 1353 pi<sup>2</sup>



5529 Blvd René-Lévesque, Sherbrooke



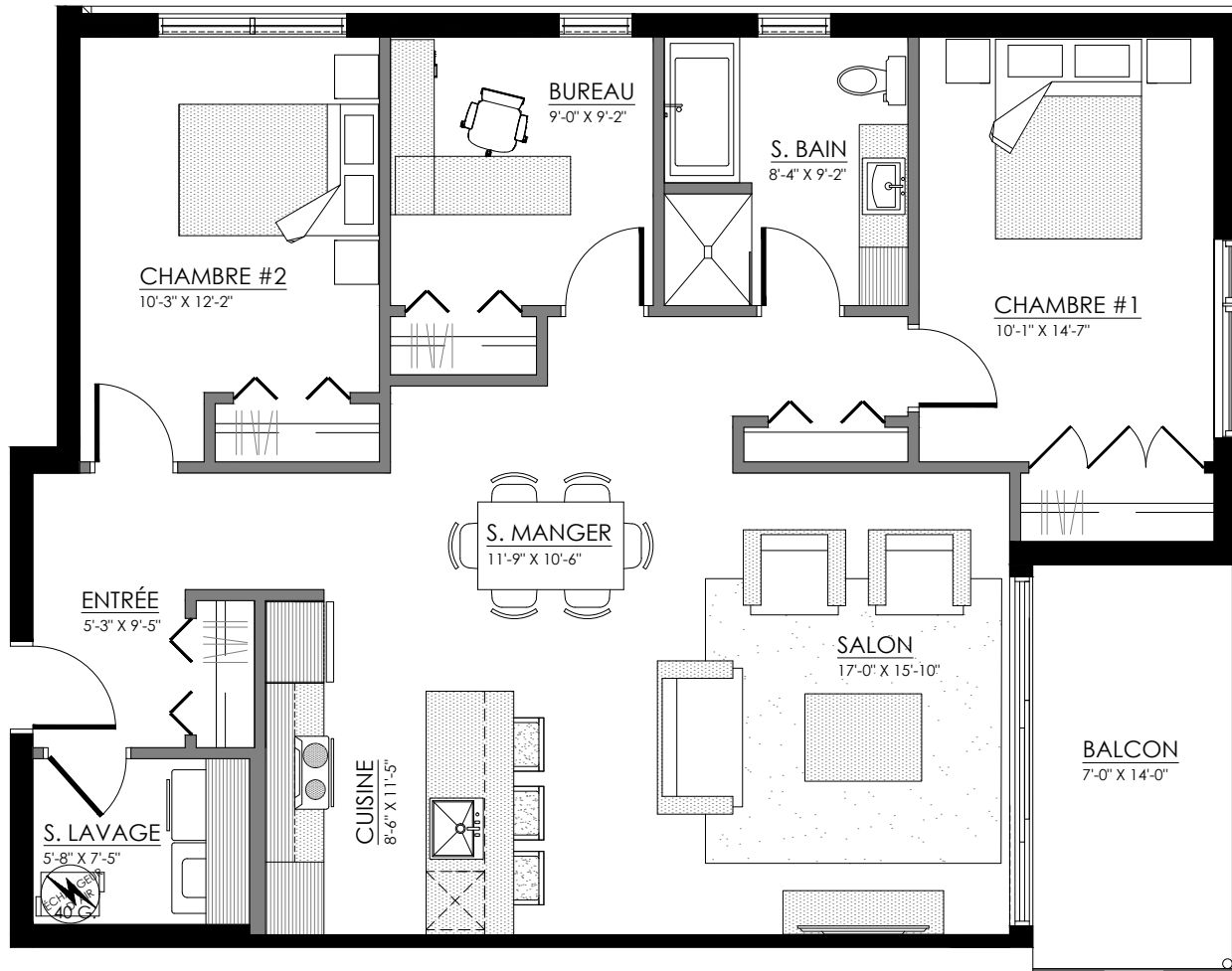
REZ-DE-CHAUSSÉE



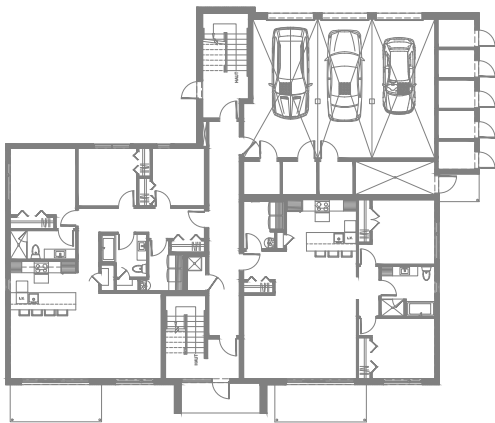
ÉTAGE 1 et 2

# 5½ - LOGEMENTS 203-303

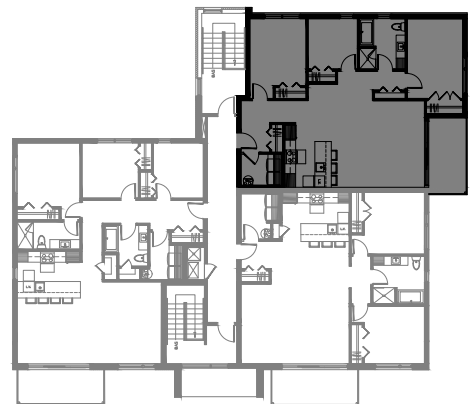
SUPERFICIE TOTALE: 1240 pi<sup>2</sup>



5529 Blvd René-Lévesque, Sherbrooke



REZ-DE-CHAUSSÉE



ÉTAGE 1 et 2