



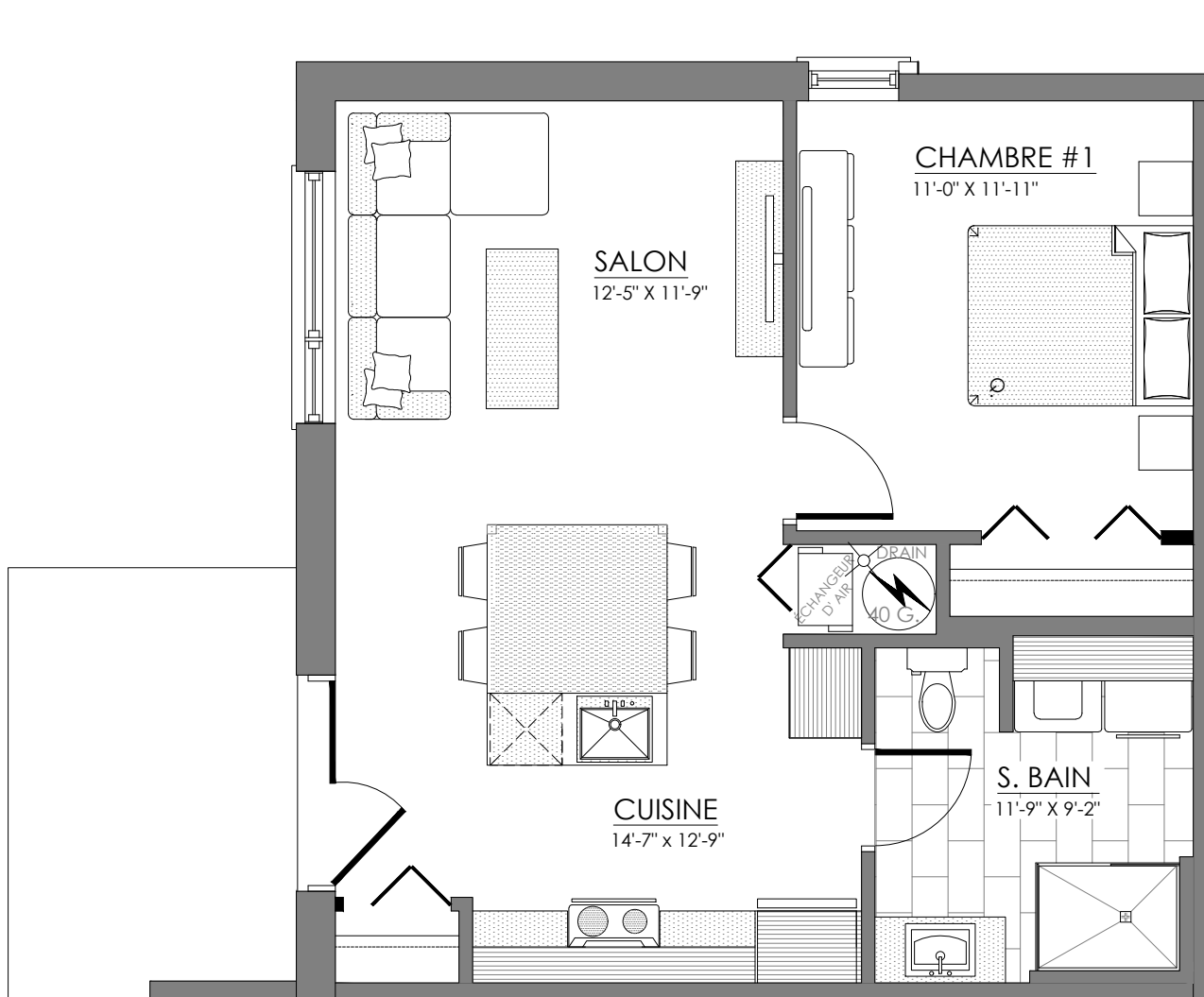
99 à 113 Rte de Windsor, Bromptonville

---

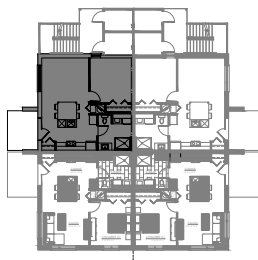
8 LOGEMENTS

# 3 1/2 - LOG. NIV. 1 (ARRIÈRE-GAUCHE)

SUPERFICIE TOTALE: 658 pi<sup>2</sup>



103 route de Windsor, Bromptonville

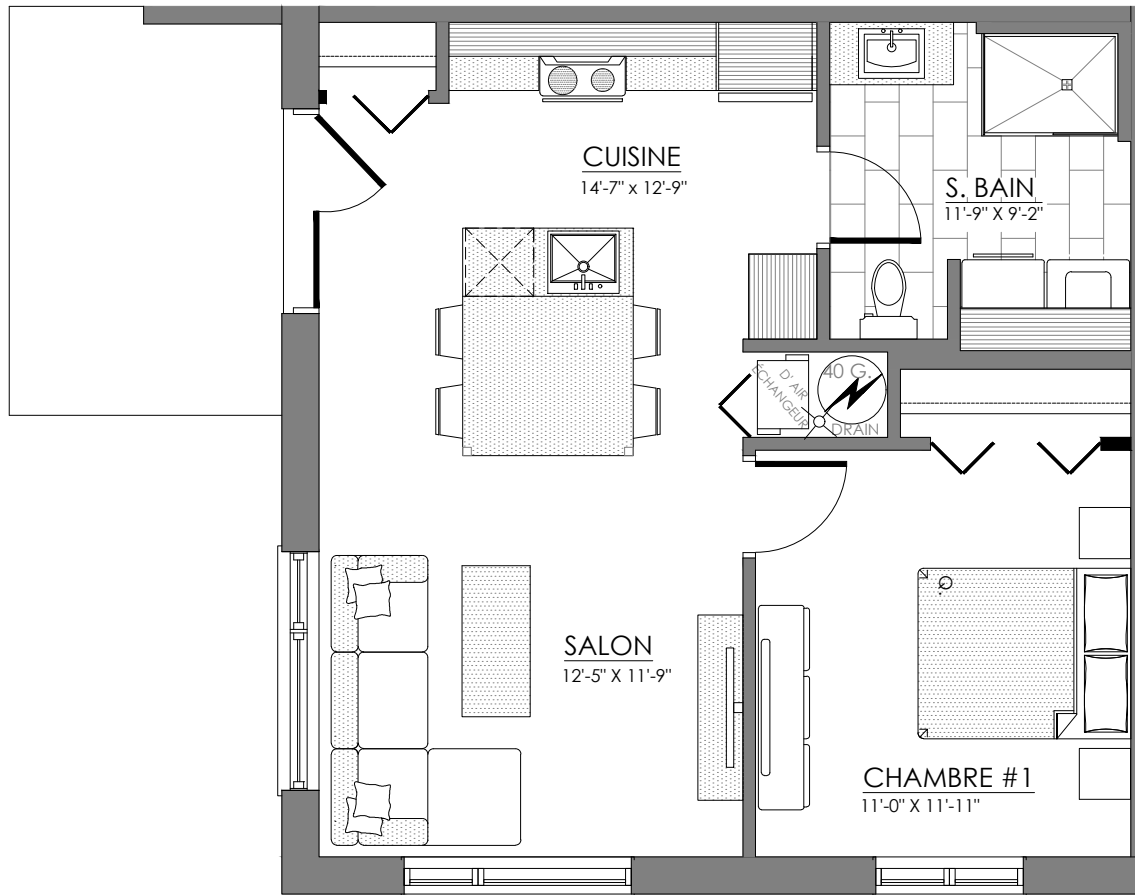


NIVEAU 1

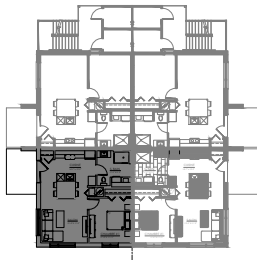


# 3 1/2 - LOG. NIV. 1 (AVANT-GAUCHE)

SUPERFICIE TOTALE: 658 pi<sup>2</sup>



105 route de Windsor, Bromptonville

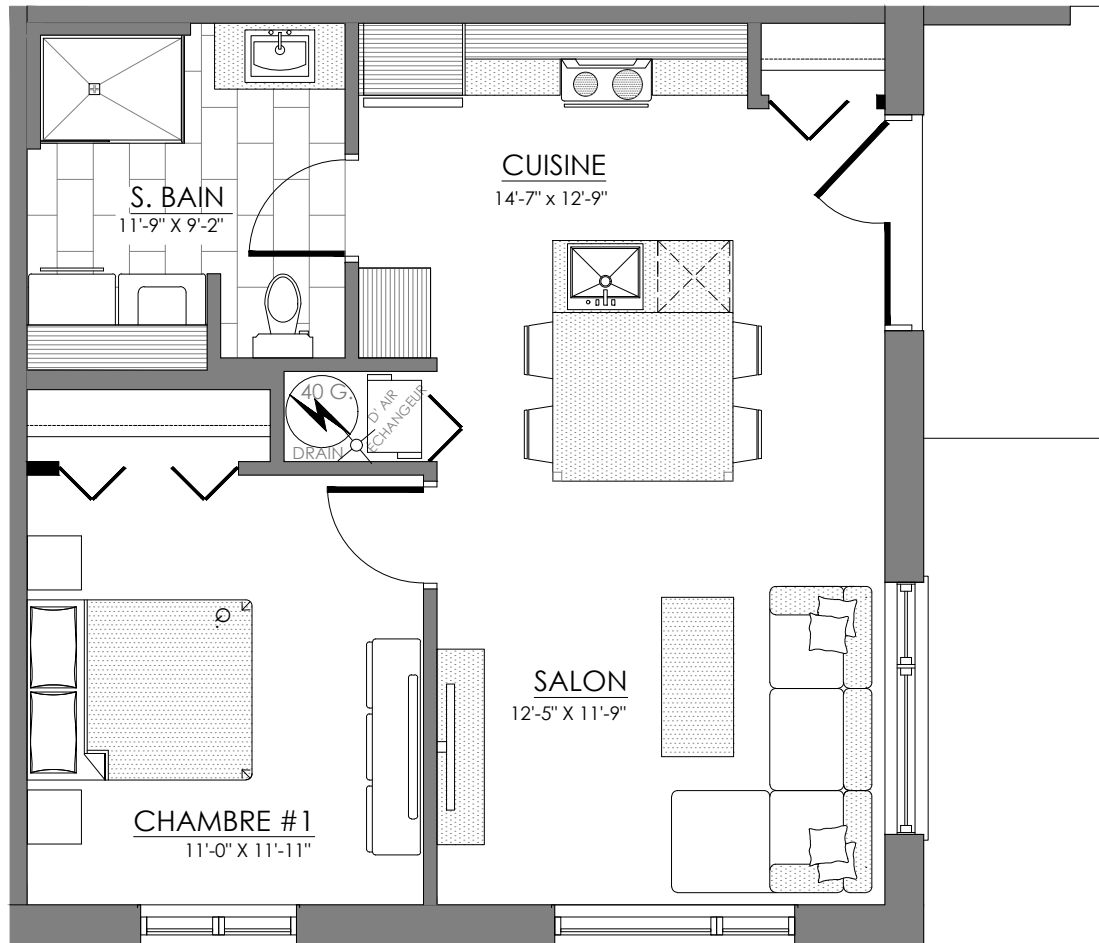


NIVEAU 1

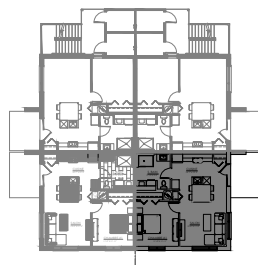


# 3 1/2 - LOG. NIV. 1 (AVANT-DROITE)

SUPERFICIE TOTALE: 658 pi<sup>2</sup>



99 route de Windsor, Bromptonville

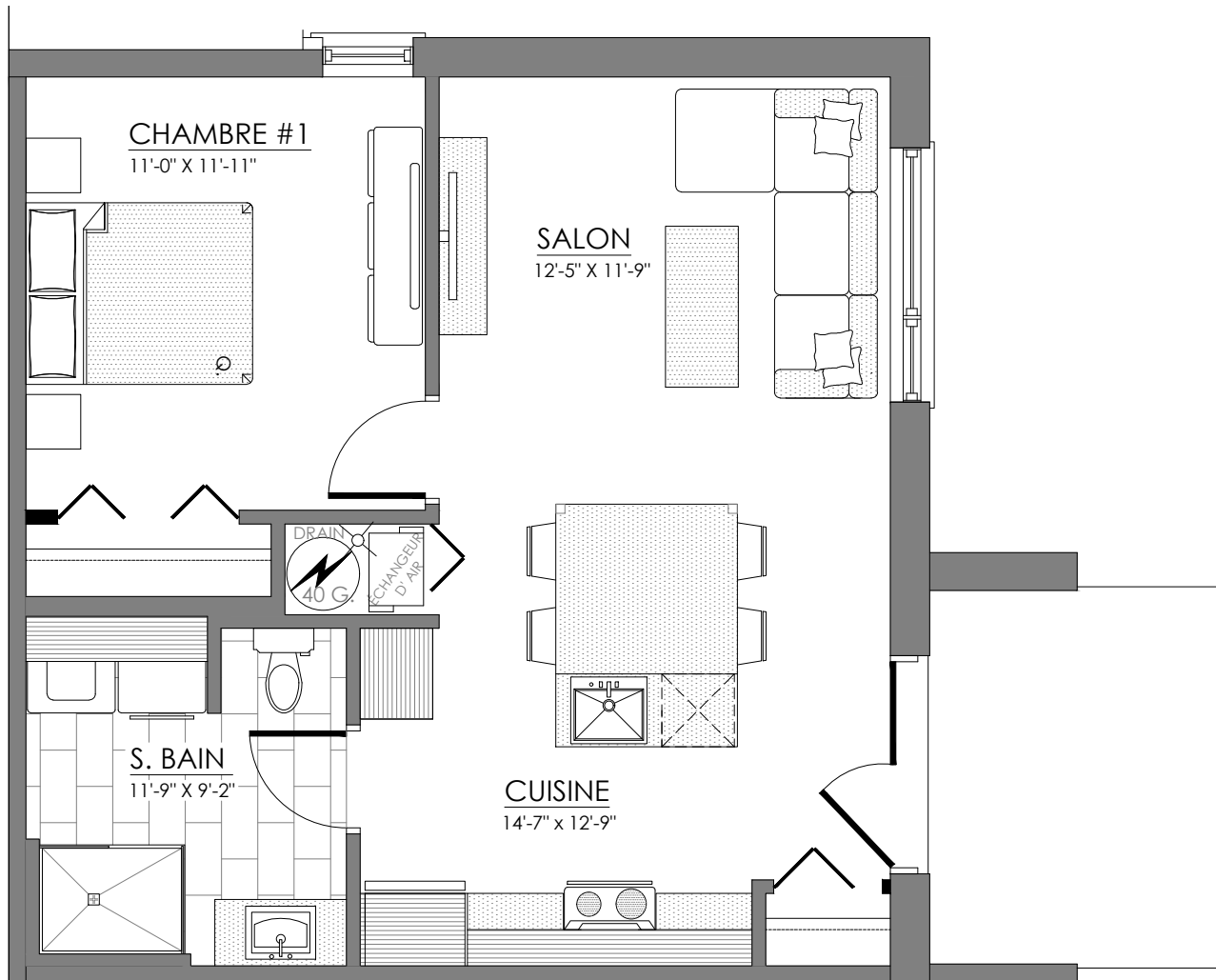


NIVEAU 1

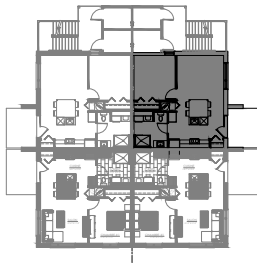


# 3 1/2 - LOG. NIV. 1 (ARRIÈRE-DROITE)

SUPERFICIE TOTALE: 658 pi<sup>2</sup>



101 route de Windsor, Bromptonville

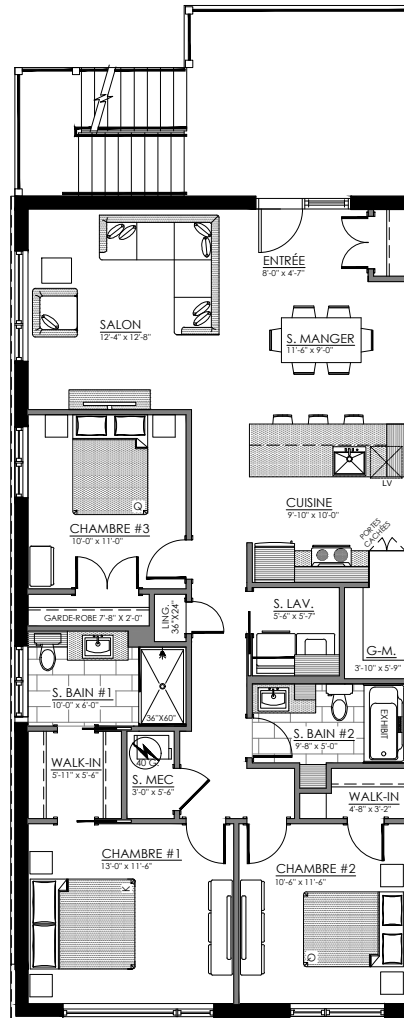


NIVEAU 1

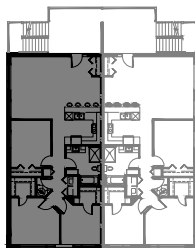


# 5 1/2 - LOGEMENT NIV. 2 (GAUCHE)

SUPERFICIE TOTALE: 1317 pi<sup>2</sup>



109 route de Windsor, Bromptonville

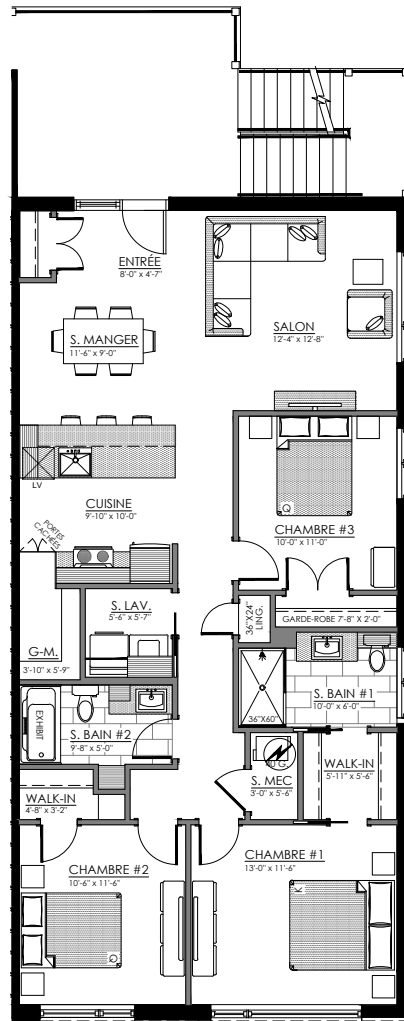


NIVEAU 2

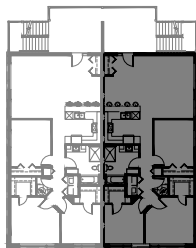


# 5 1/2 - LOGEMENT NIV. 2 (DROITE)

SUPERFICIE TOTALE: 1317 pi<sup>2</sup>



107 route de Windsor, Bromptonville

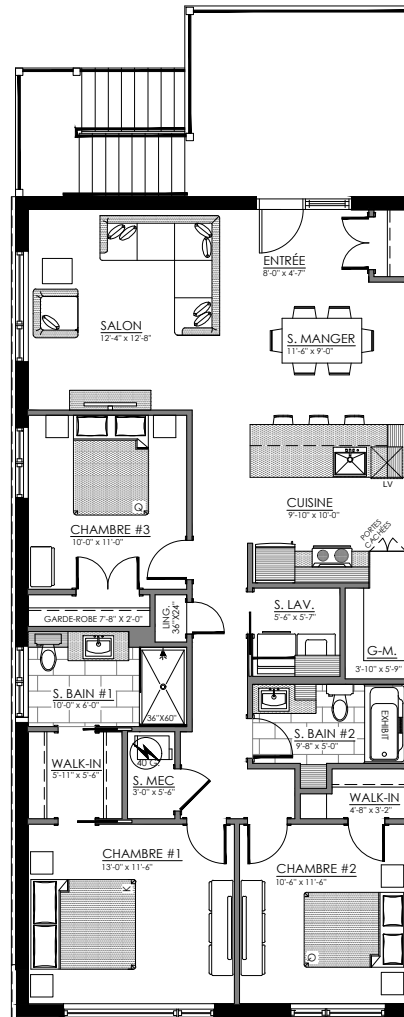


NIVEAU 2

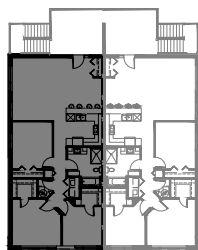


# 5 1/2 - LOGEMENT NIV. 3 (GAUCHE)

SUPERFICIE TOTALE: 1317 pi<sup>2</sup>



113 route de Windsor, Bromptonville



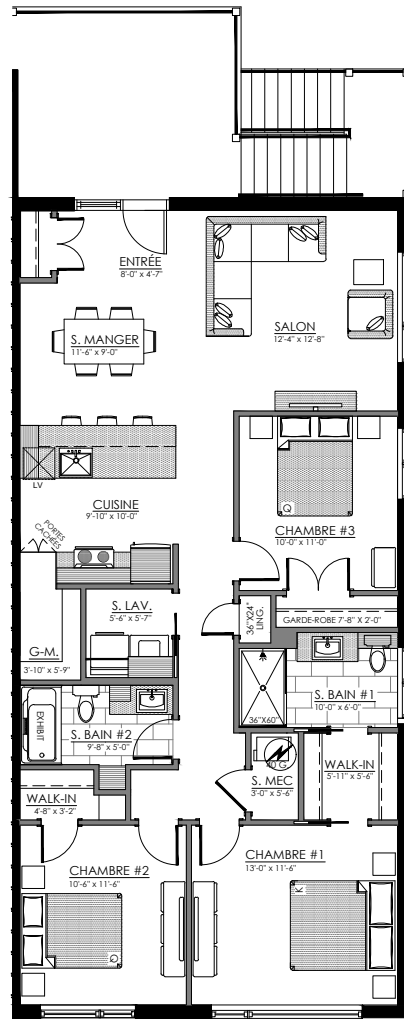
NIVEAU 3



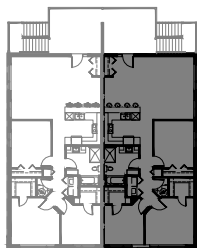


# 5 1/2 - LOGEMENT NIV. 3 (DROITE)

SUPERFICIE TOTALE: 1317 pi<sup>2</sup>



111 route de Windsor, Bromptonville



NIVEAU 3

