

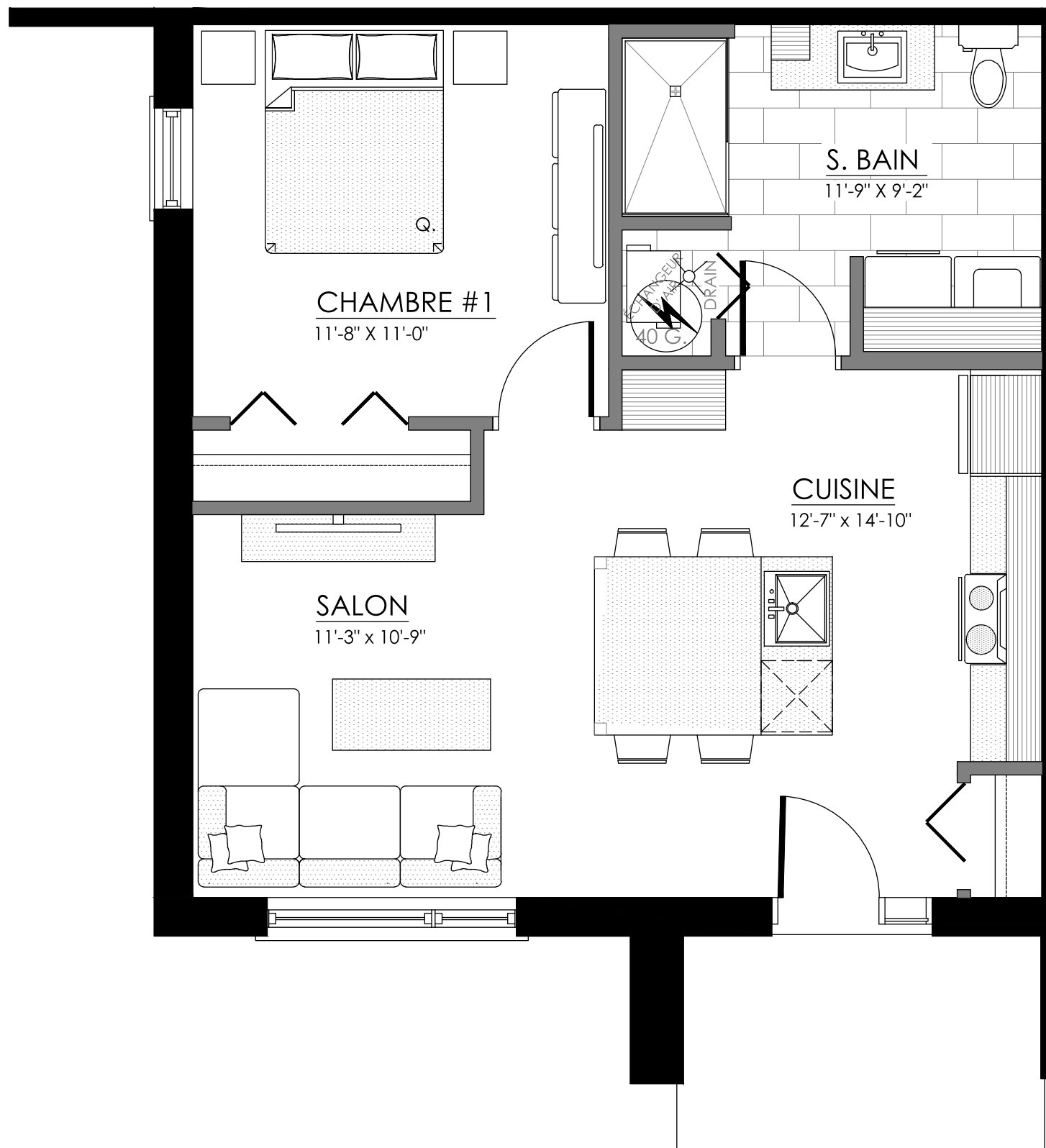


1507 à 1521 rue Dufour, Sherbrooke

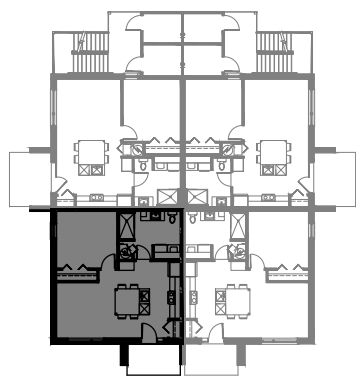
8 LOGEMENTS

3 1/2 - LOG. NIV. 1 (AVANT-GAUCHE)

SUPERFICIE TOTALE: 658 pi²



1511 rue Dufour, Sherbrooke

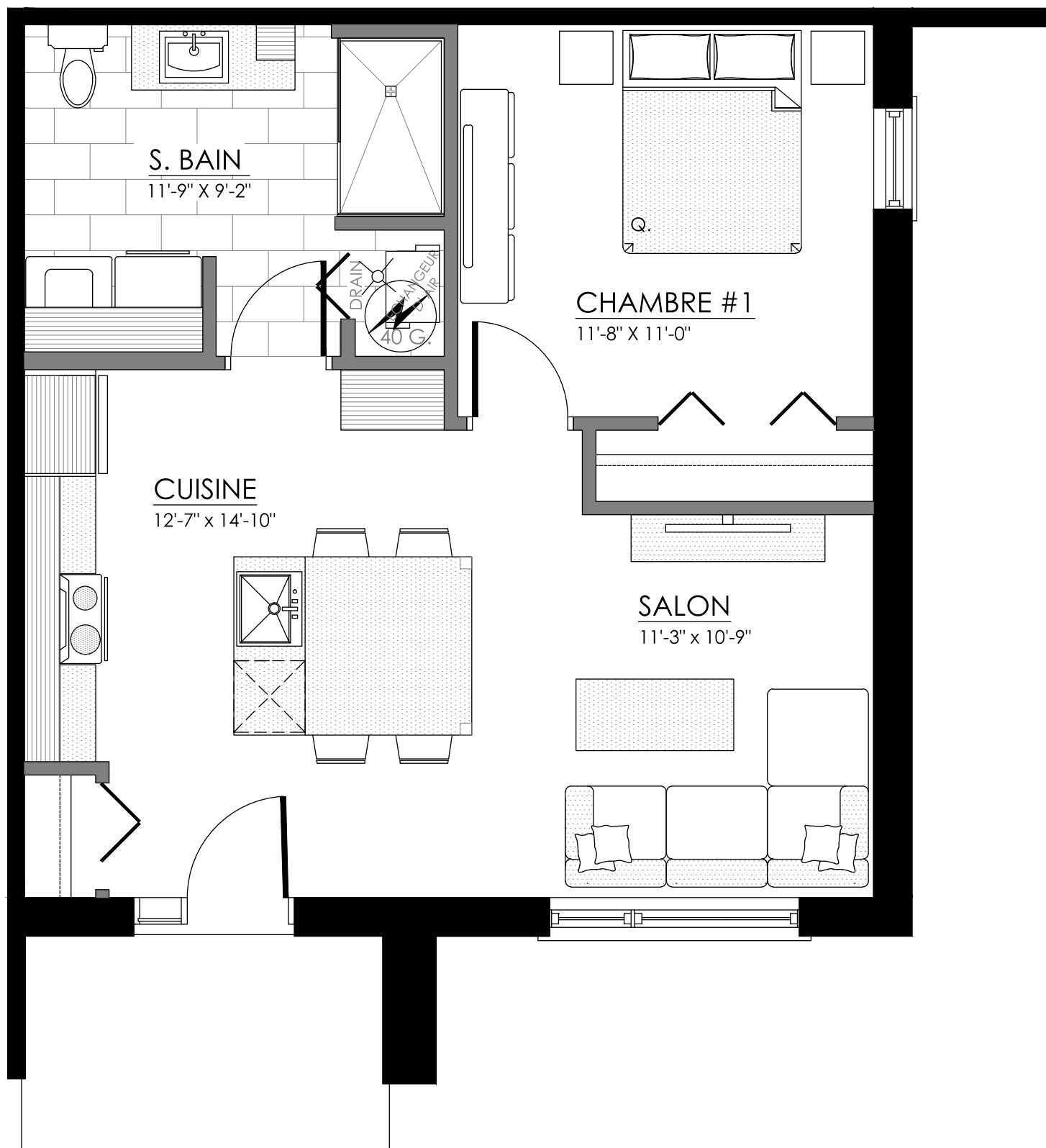


NIVEAU 1

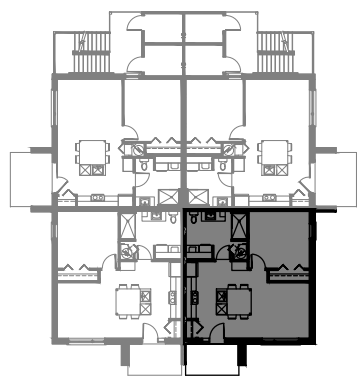


3 1/2 - LOG. NIV. 1 (AVANT-DROITE)

SUPERFICIE TOTALE: 658 pi²



1509 rue Dufour, Sherbrooke

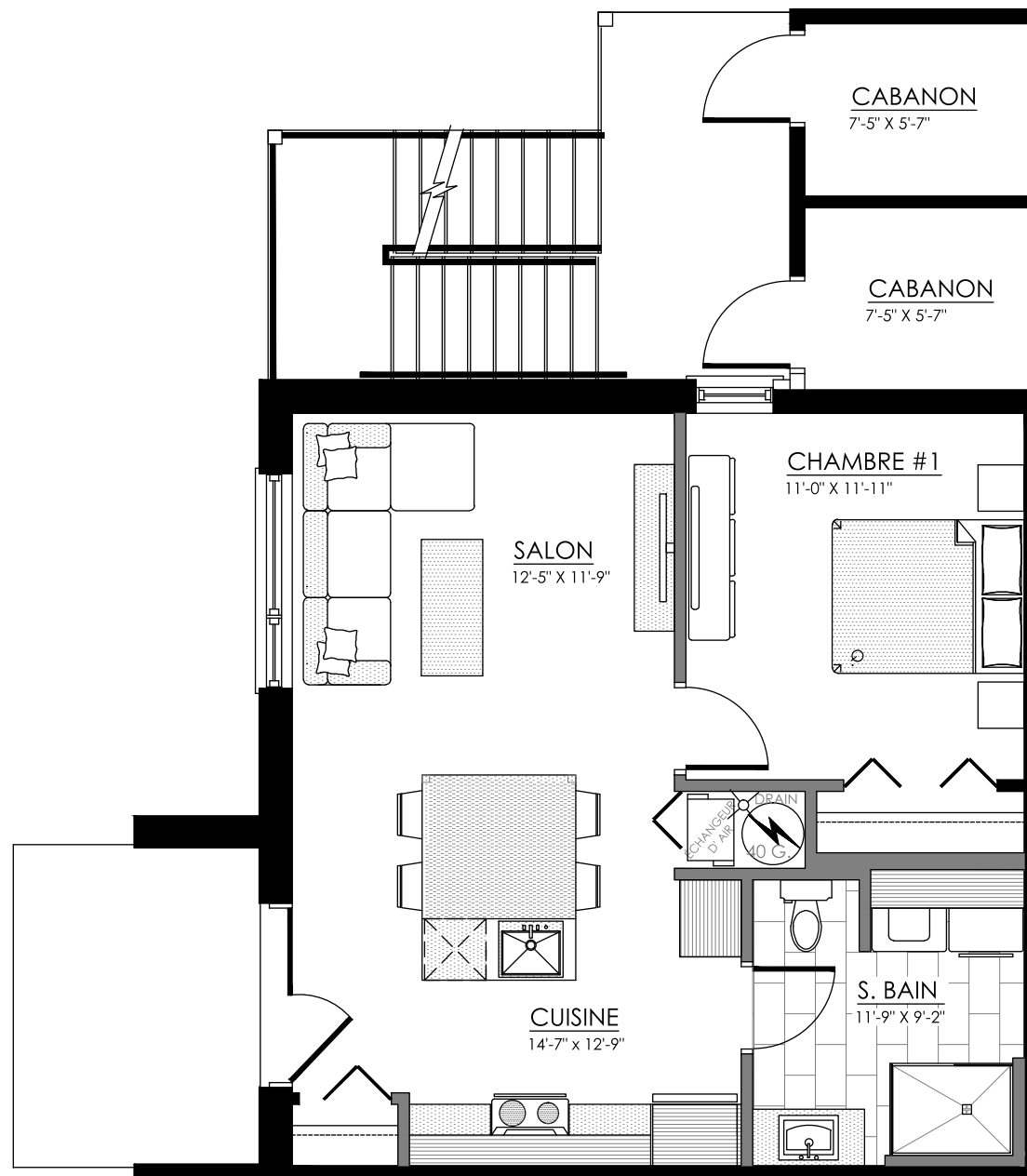


NIVEAU 1

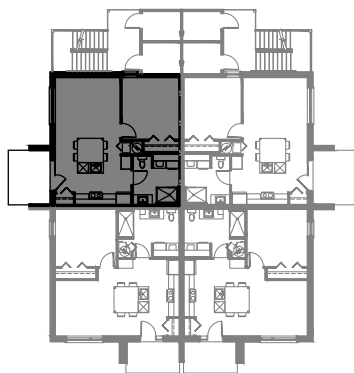


3 1/2 - LOG. NIV. 1 (ARRIÈRE-GAUCHE)

SUPERFICIE TOTALE: 658 pi²



1513 rue Dufour, Sherbrooke

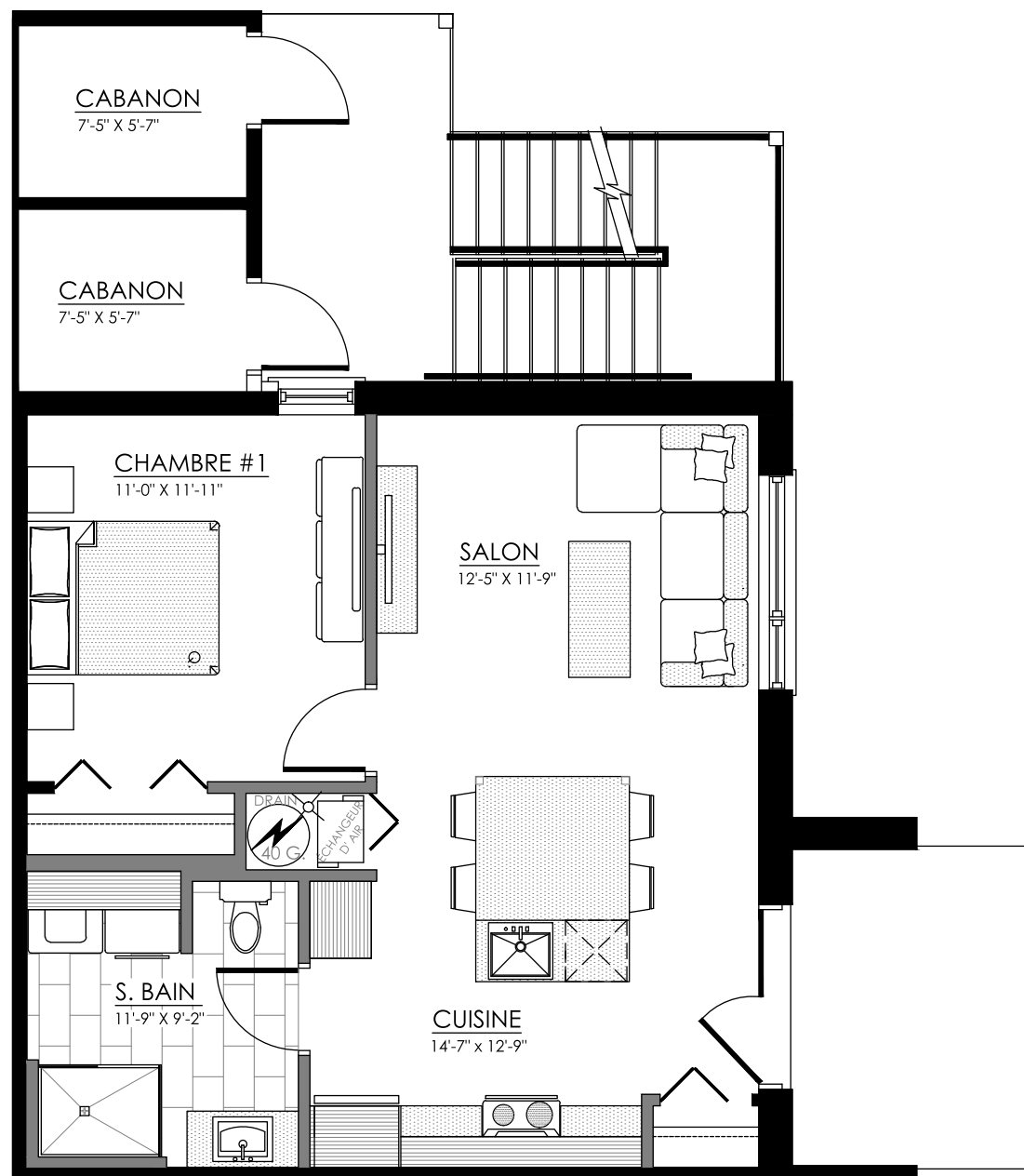


NIVEAU 1

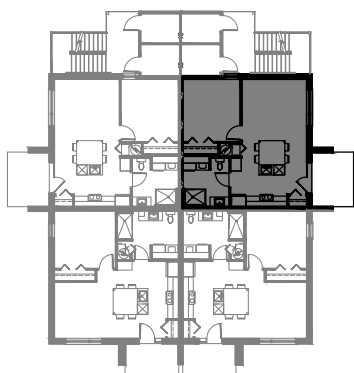


3 1/2 - LOG. NIV. 1 (ARRIÈRE-DROITE)

SUPERFICIE TOTALE: 658 pi²



1507 rue Dufour, Sherbrooke

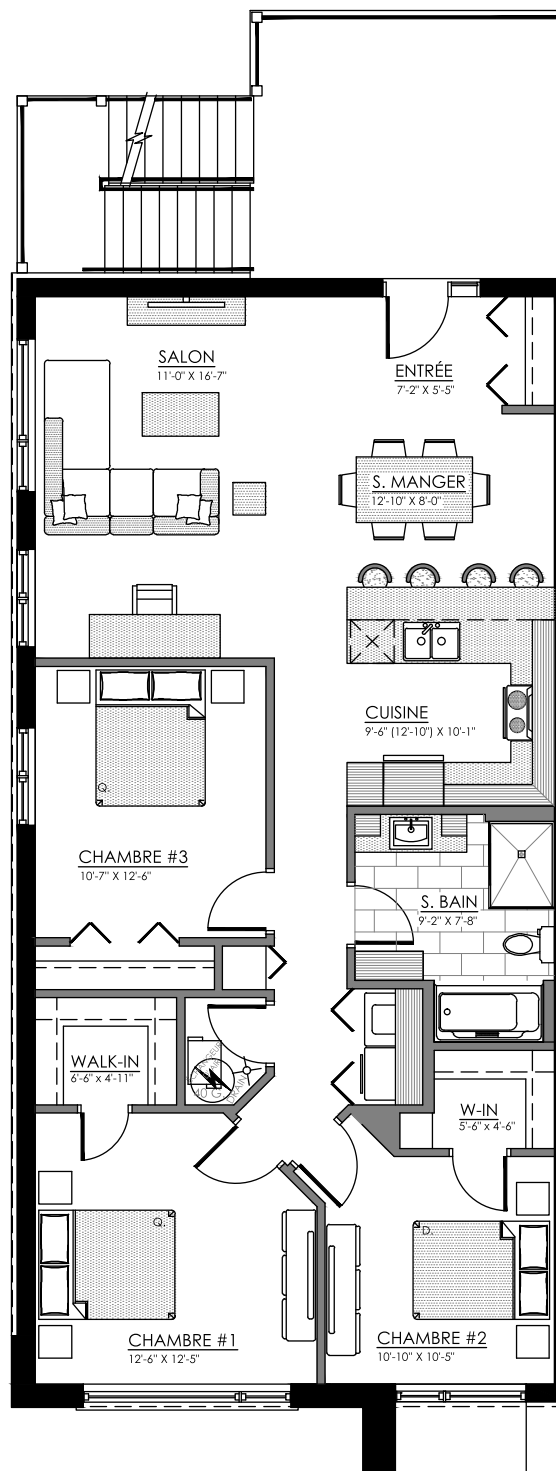


NIVEAU 1

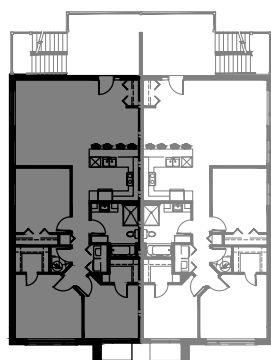


5 1/2 - LOGEMENT NIV. 2 (GAUCHE)

SUPERFICIE TOTALE: 1317 pi²



1517 rue Dufour, Sherbrooke

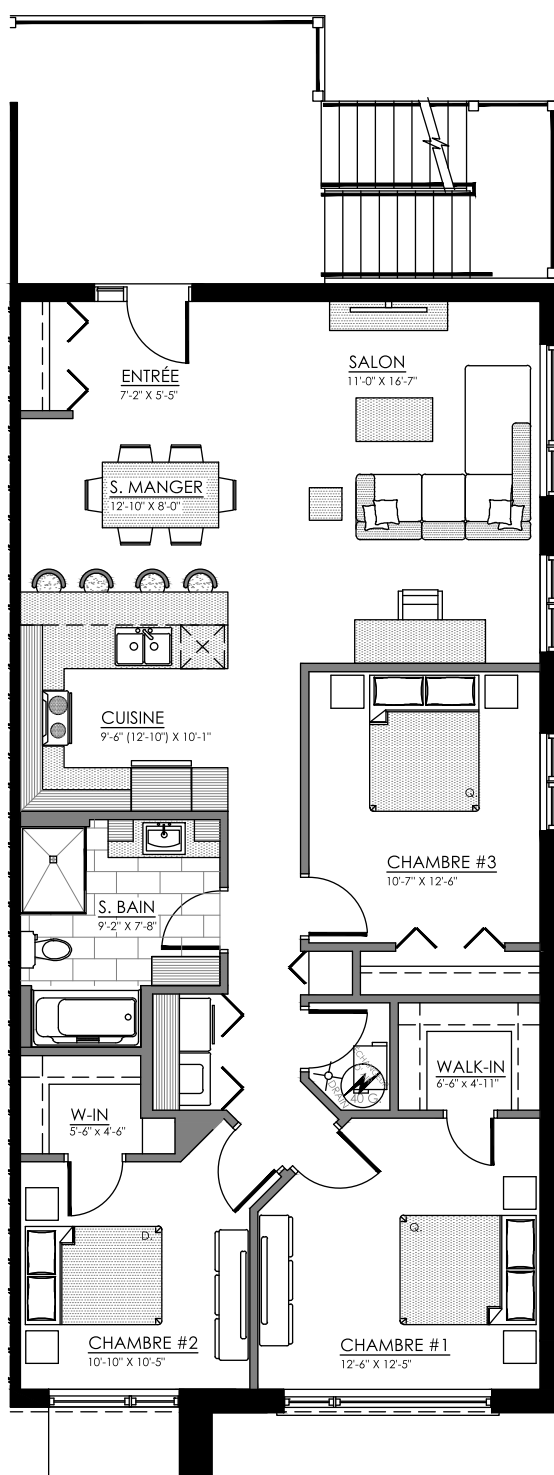


NIVEAU 2

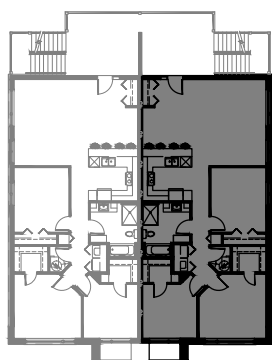


5 1/2 - LOGEMENT NIV. 2 (DROITE)

SUPERFICIE TOTALE: 1317 pi²



1515 rue Dufour, Sherbrooke

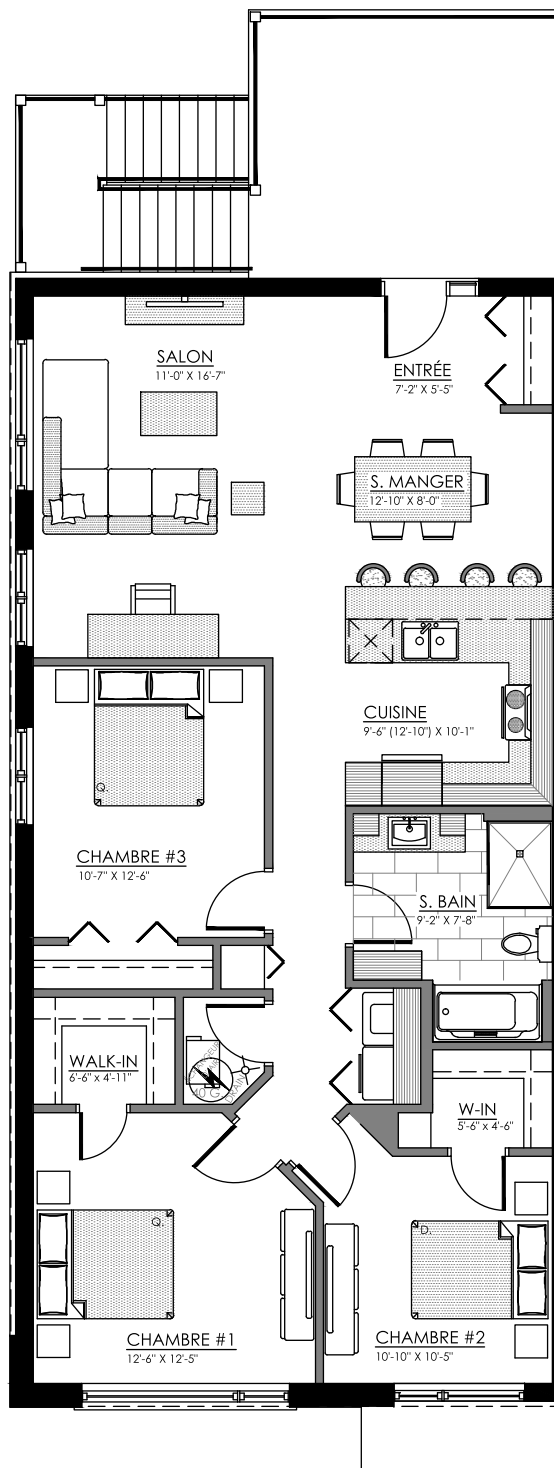


NIVEAU 2

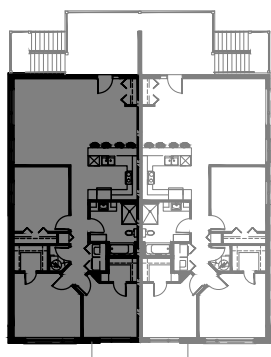


5 1/2 - LOGEMENT NIV. 3 (GAUCHE)

SUPERFICIE TOTALE: 1317 pi²



1521 rue Dufour, Sherbrooke

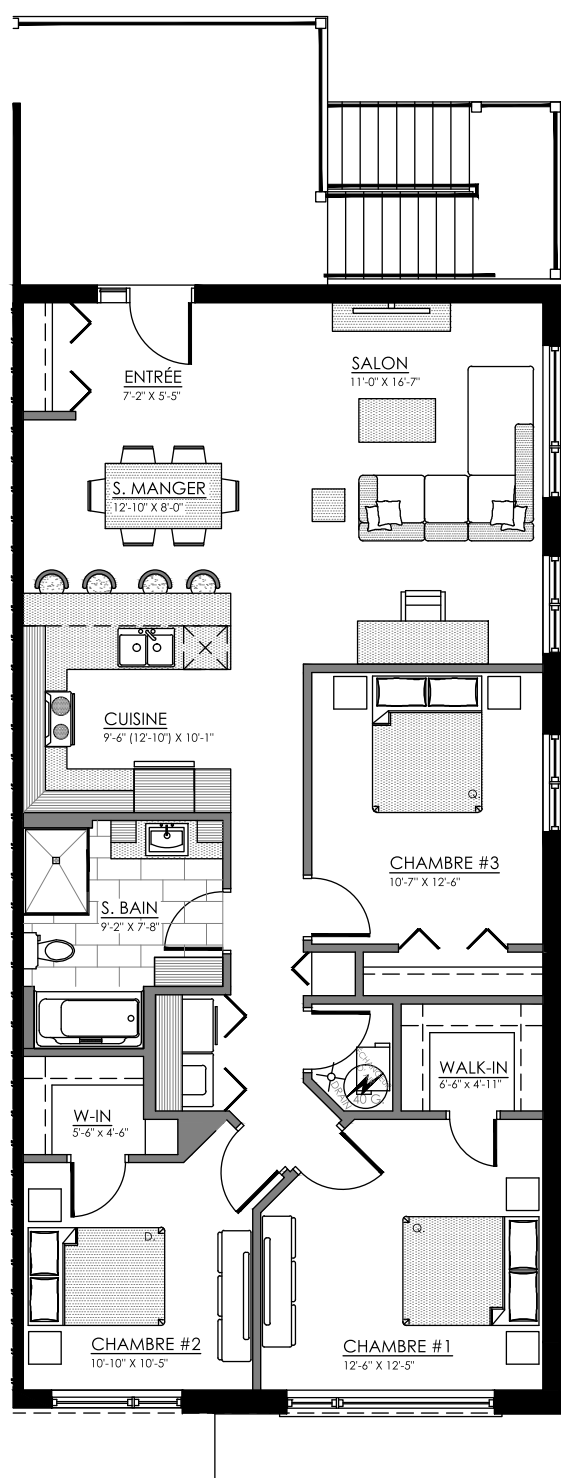


NIVEAU 3

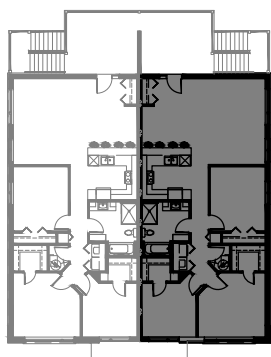


5 1/2 - LOGEMENT NIV. 3 (DROITE)

SUPERFICIE TOTALE: 1317 pi²



1519 rue Dufour, Sherbrooke



NIVEAU 3

