

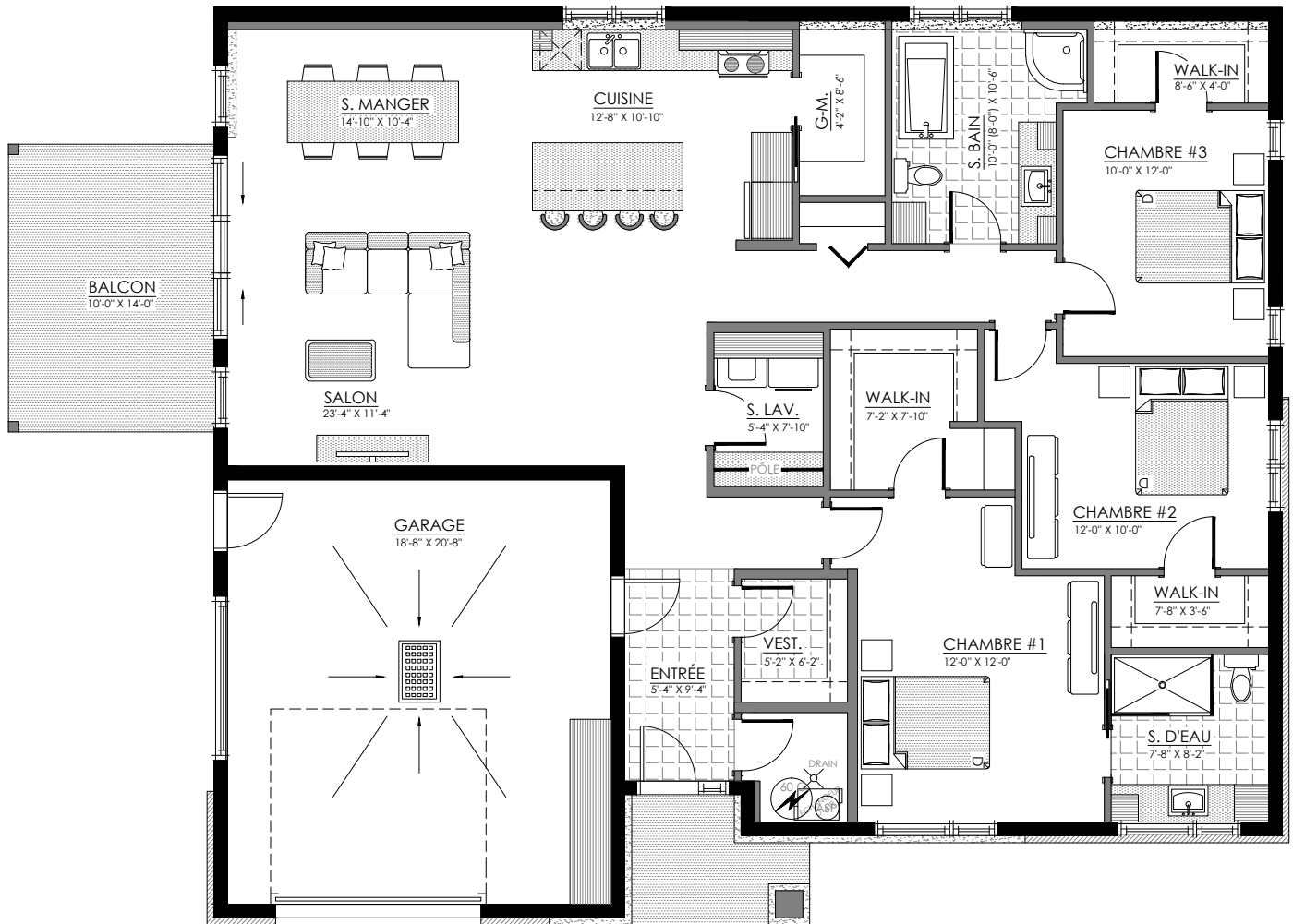


1644 à 1652 rue Calypso, Magog

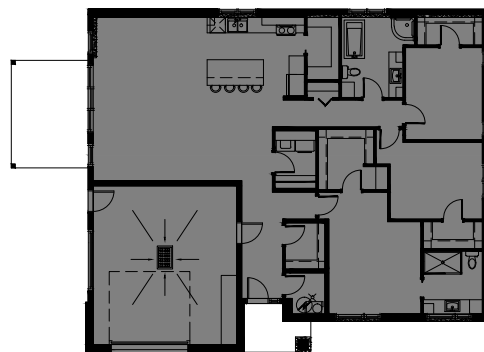
5 LOGEMENTS

# 5 1/2 avec garage - LOGEMENT NIV. 1

SUPERFICIE TOTALE: 2193 pi<sup>2</sup> (logement: 1743pi<sup>2</sup> / Garage: 450pi<sup>2</sup>)



1644 rue Calypso, Magog

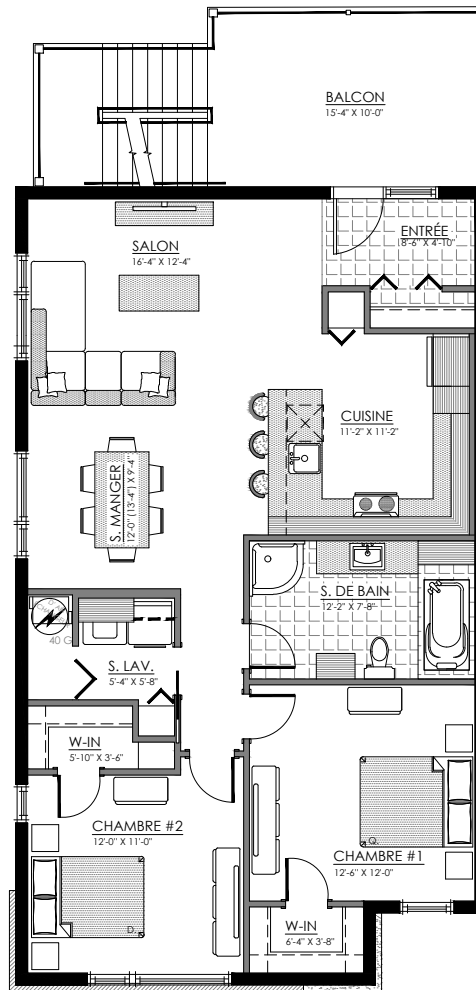


NIVEAU 1

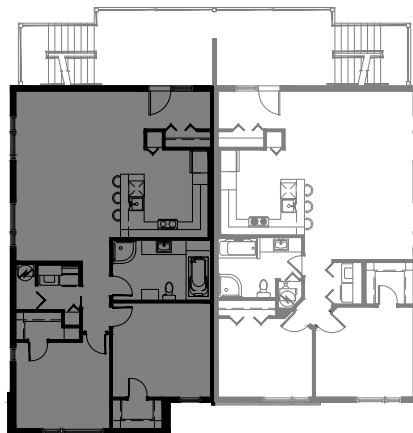


# 4 1/2 - LOGEMENT NIV. 2 (GAUCHE)

SUPERFICIE TOTALE: 1139 pi<sup>2</sup>



1646 rue Calypso, Magog

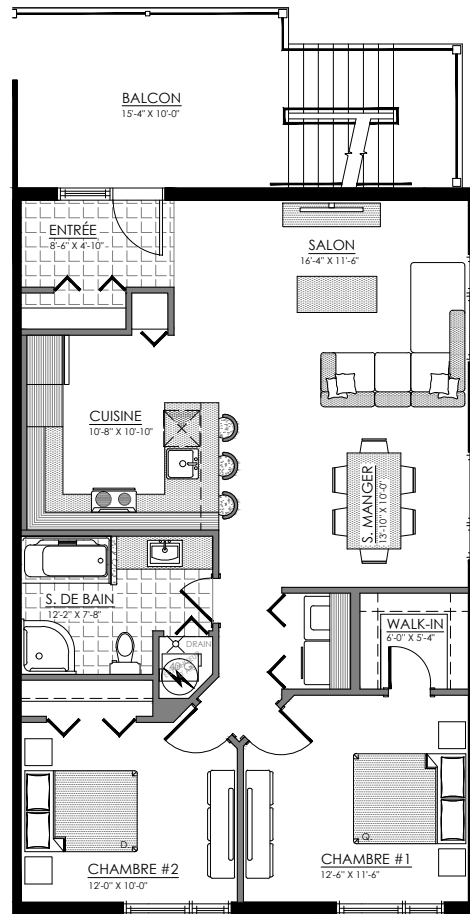


NIVEAU 2

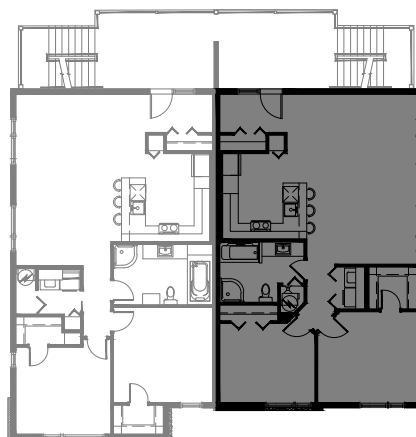


# 4 1/2 - LOGEMENT NIV. 2 (DROITE)

SUPERFICIE TOTALE: 1050 pi<sup>2</sup>



1648 rue Calypso, Magog

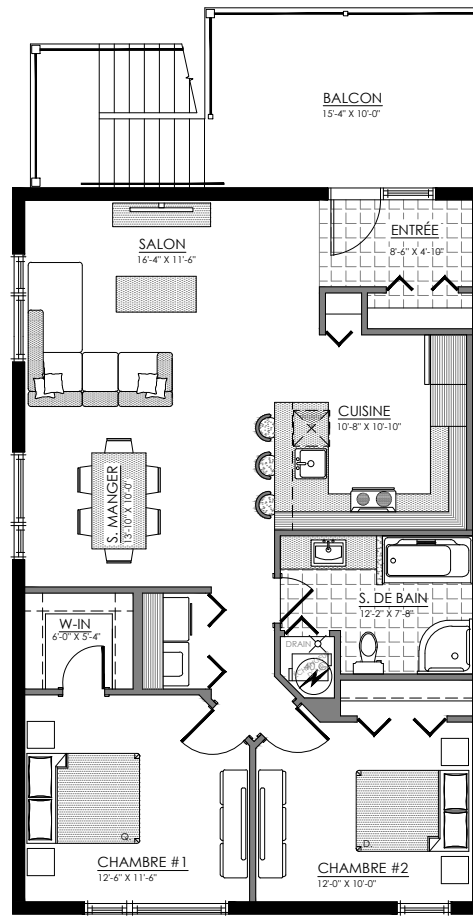


NIVEAU 2

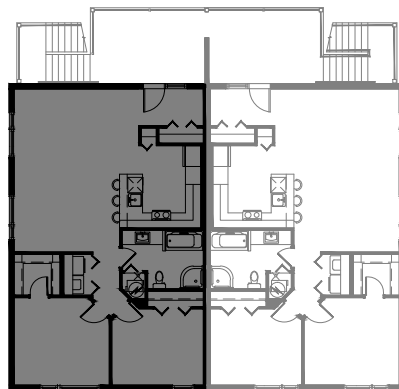


# 4 1/2 - LOGEMENT NIV. 3 (GAUCHE)

SUPERFICIE TOTALE: 1050 pi<sup>2</sup>



1650 rue Calypso, Magog

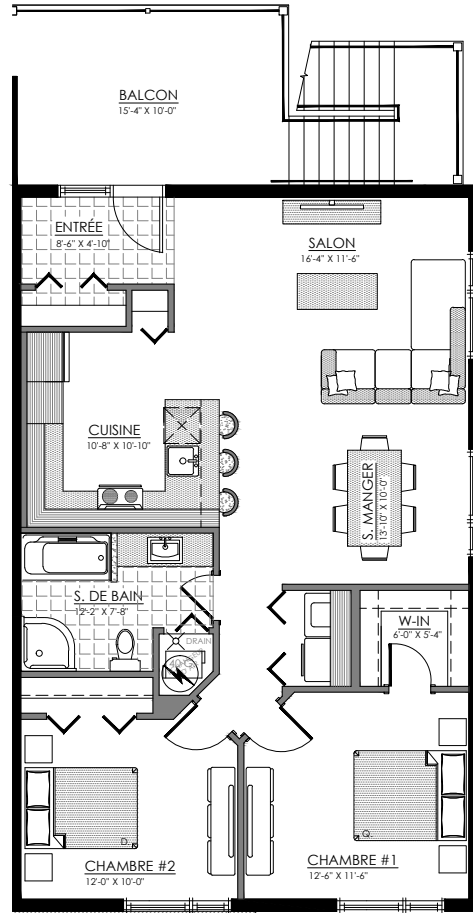


NIVEAU 3

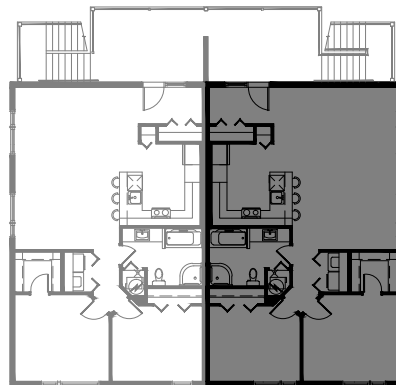


# 4 1/2 - LOGEMENT NIV. 3 (DROITE)

SUPERFICIE TOTALE: 1050 pi<sup>2</sup>



1652 rue Calypso, Magog



NIVEAU 3

