



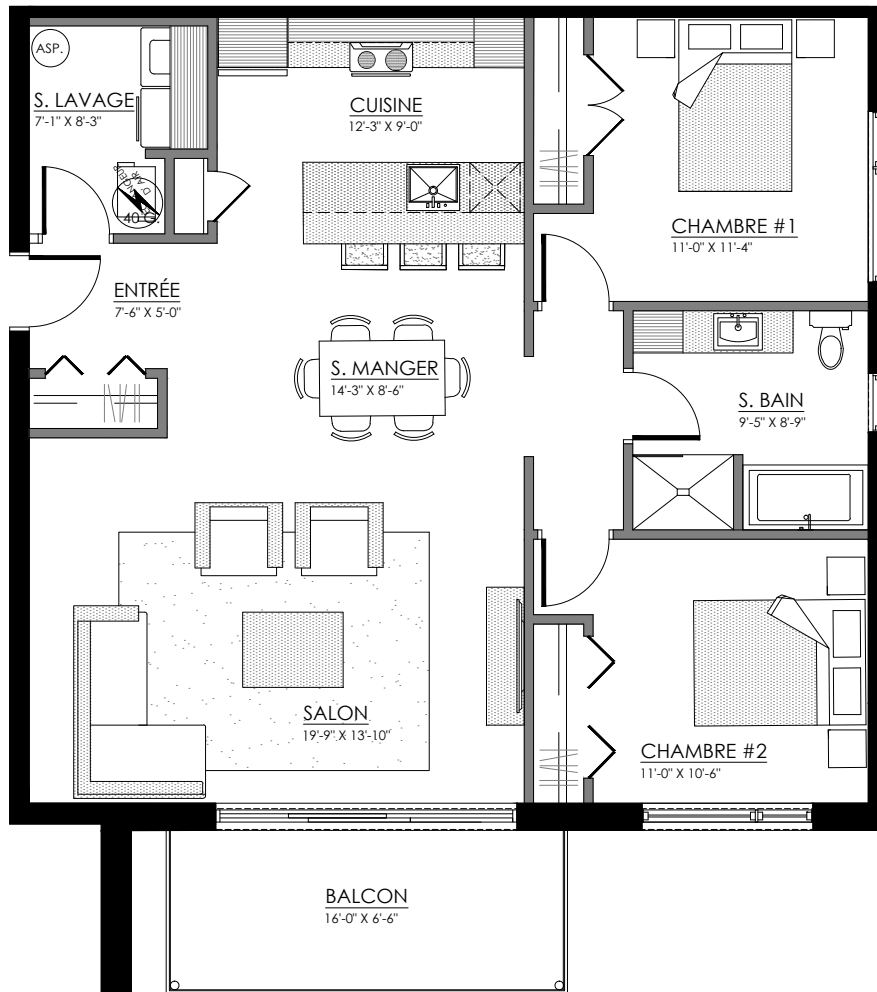
5465 Boul. René-Lévesque, Sherbrooke

---

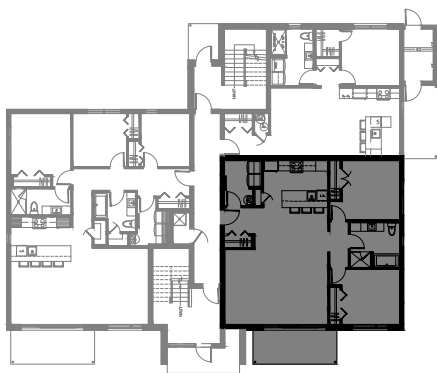
8 LOGEMENTS

# 4½ - LOGEMENTS 101-201-301

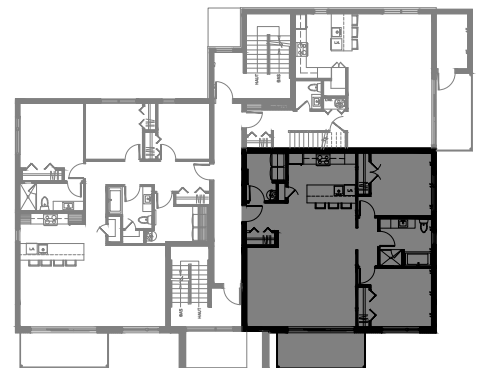
SUPERFICIE TOTALE: 1144 pi<sup>2</sup>



5465 Boul. René-Lévesque, Sherbrooke



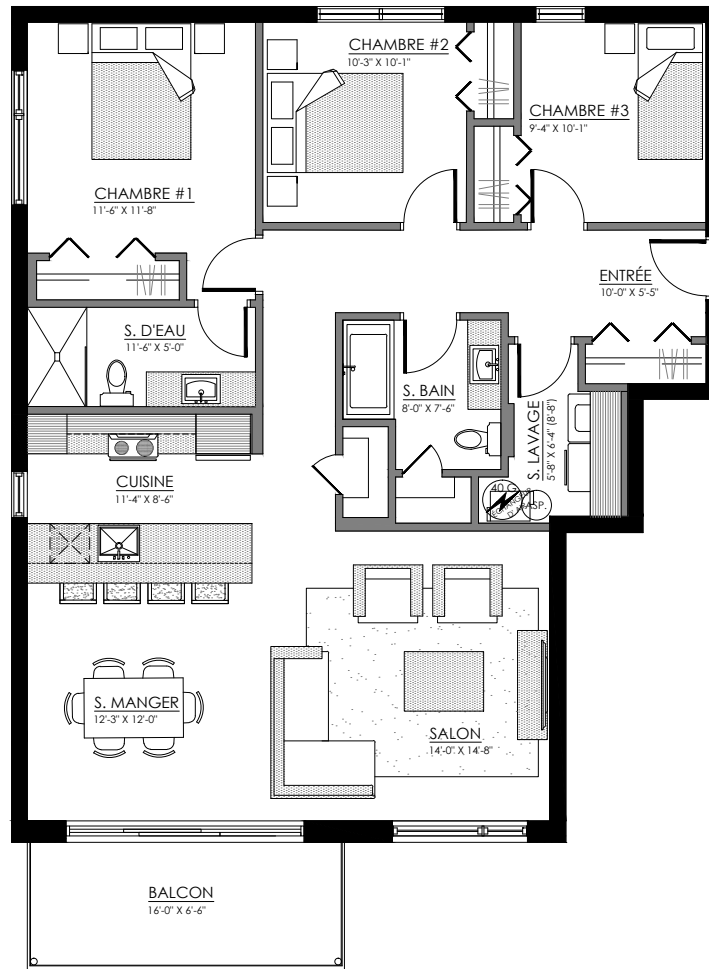
REZ-DE-CHAUSSÉE



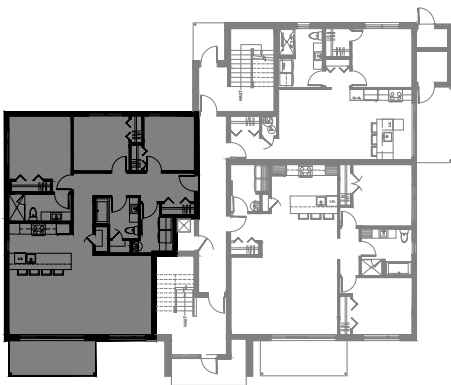
ÉTAGE 1 et 2

# 5½ - LOGEMENTS 102-202-302

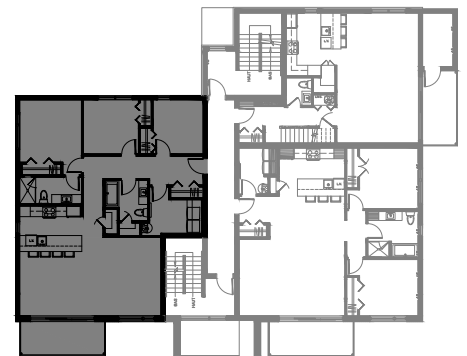
SUPERFICIE TOTALE: 1359 pi<sup>2</sup>



5465 Boul. René-Lévesque, Sherbrooke



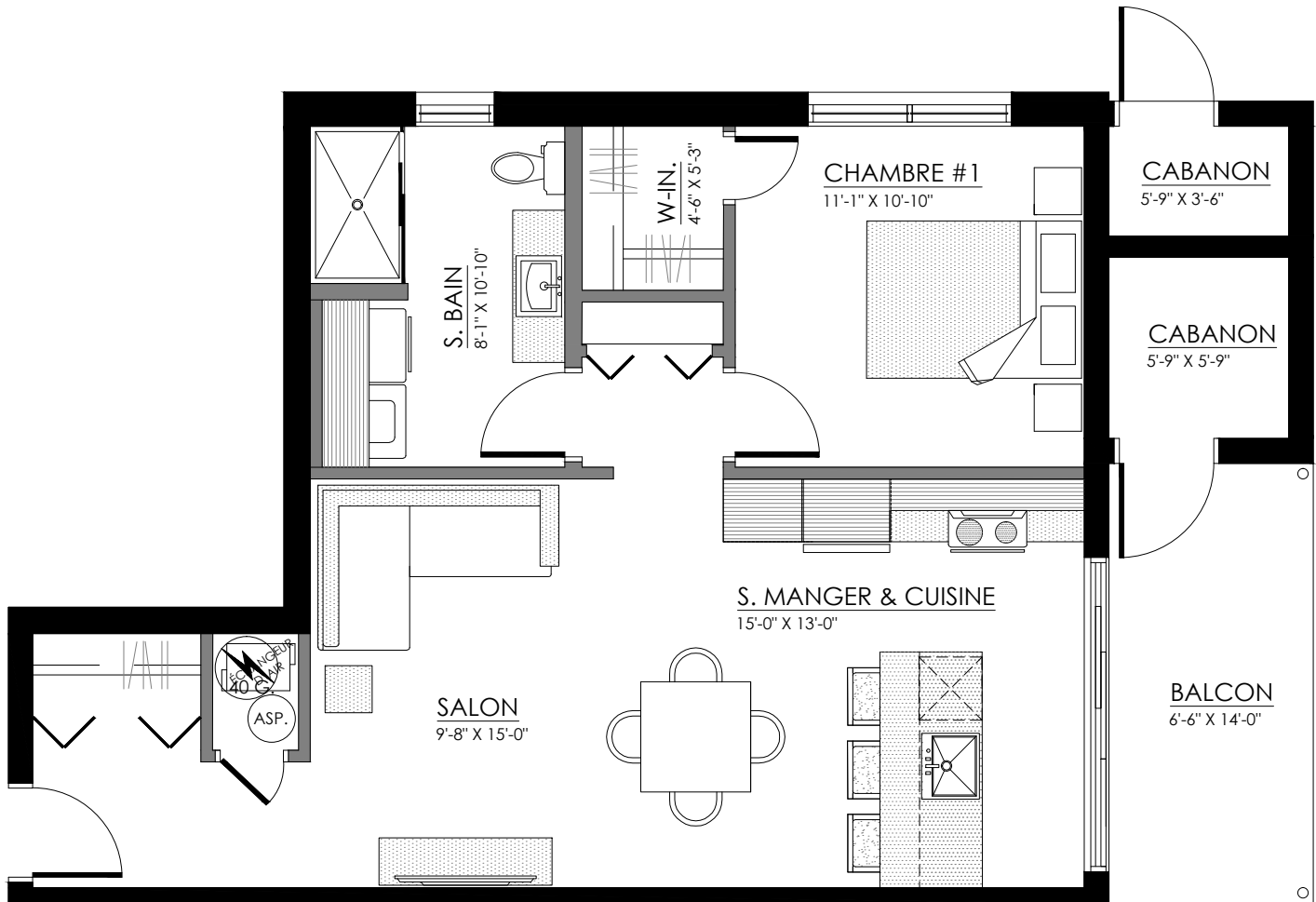
REZ-DE-CHAUSSÉE



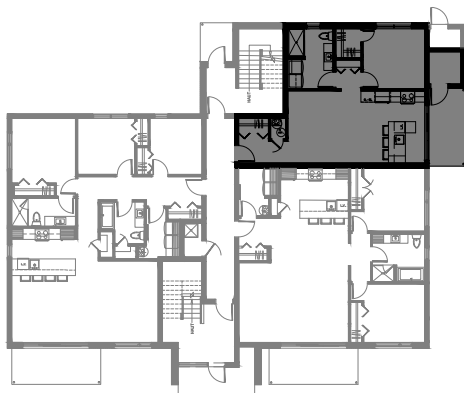
ÉTAGE 1 et 2

# 3½ - LOGEMENT 103

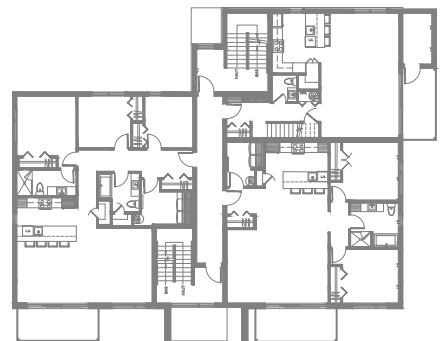
SUPERFICIE TOTALE: 759 pi<sup>2</sup>



5465 Boul. René-Lévesque, Sherbrooke



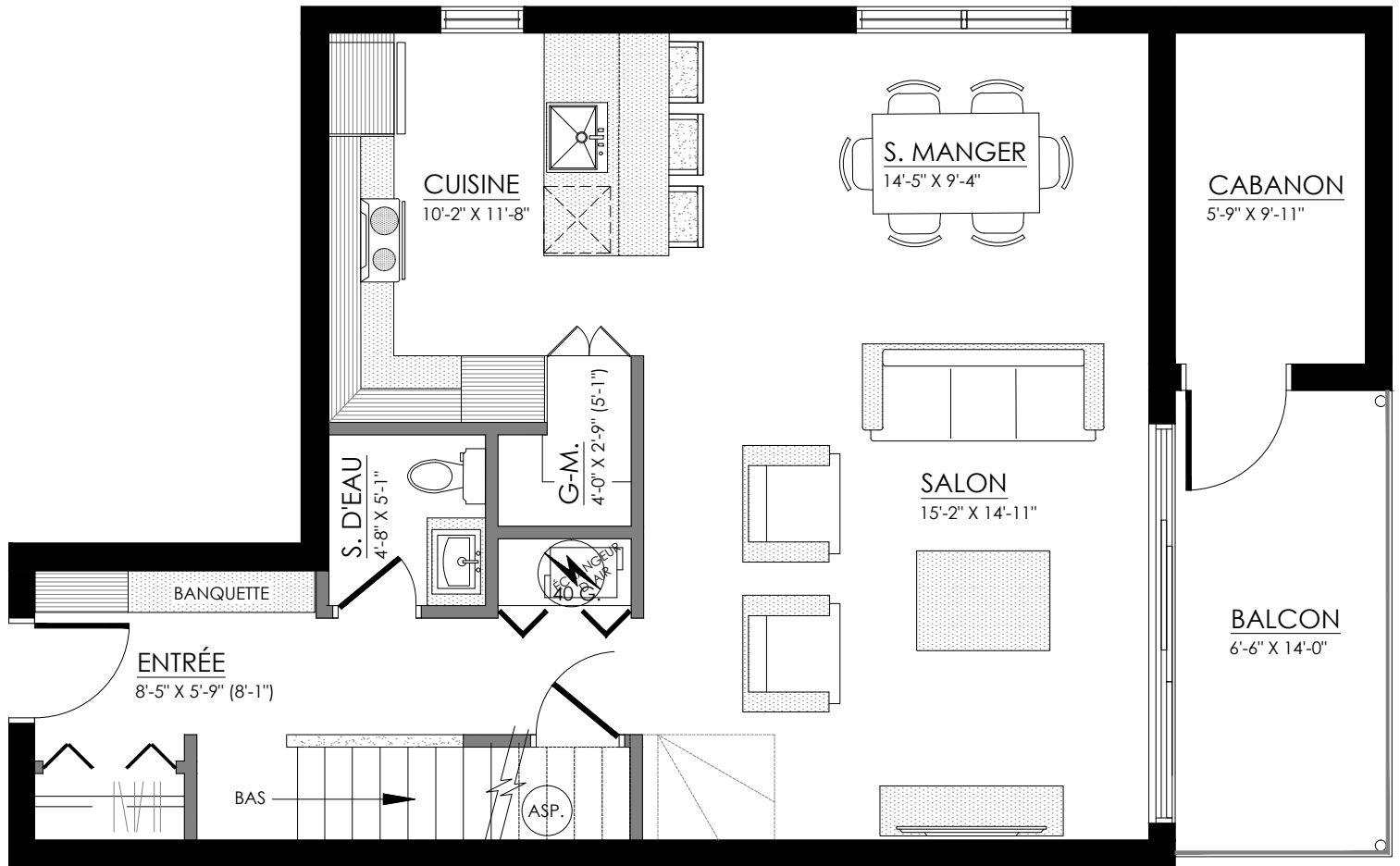
REZ-DE-CHAUSSÉE



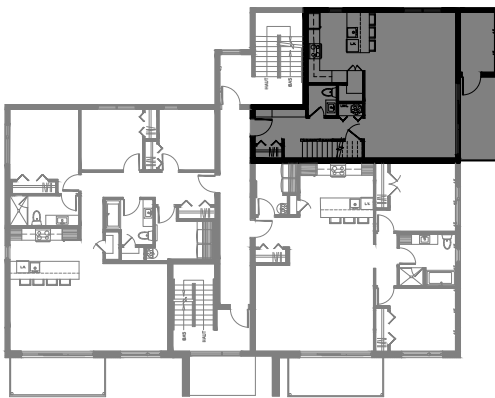
ÉTAGE 1 et 2

# 5½ sur 2 étages- LOGEMENT 203

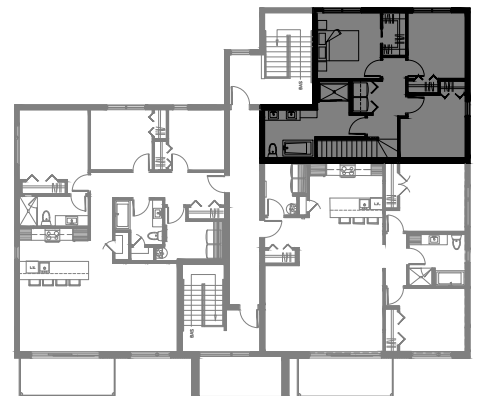
SUPERFICIE TOTALE: 1518 pi² (ÉTAGE 1 = 759pi²)



5465 Boul. René-Lévesque, Sherbrooke



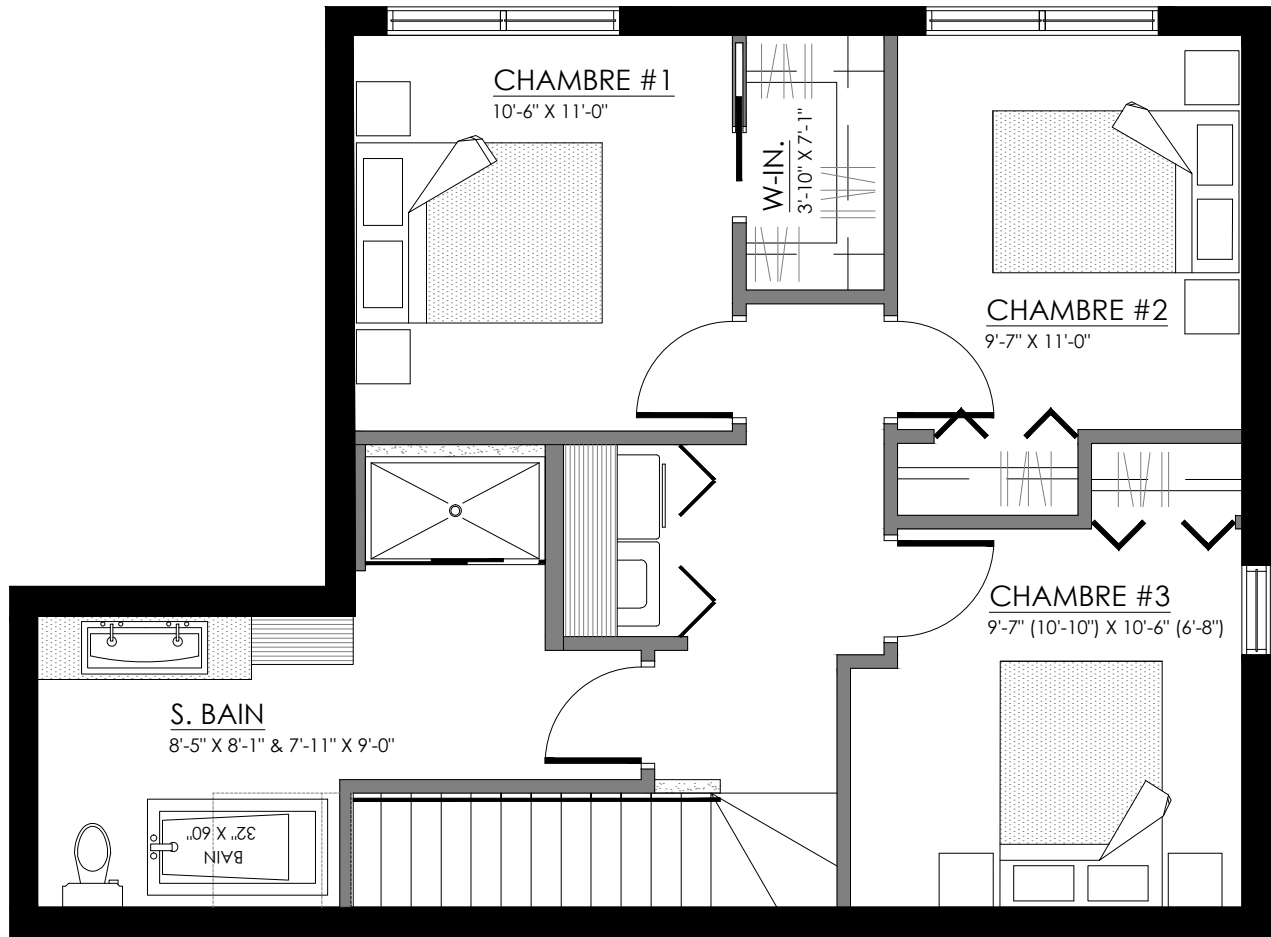
ÉTAGE 1



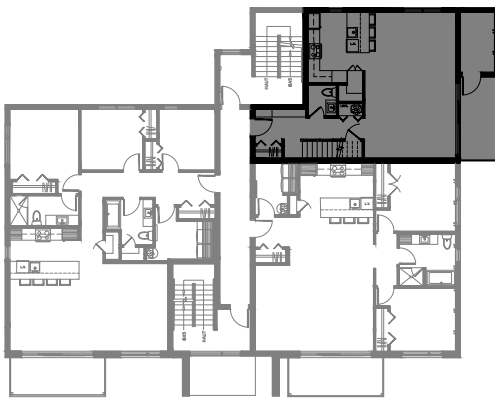
ÉTAGE 2

# 5½ sur 2 étages- LOGEMENT 203

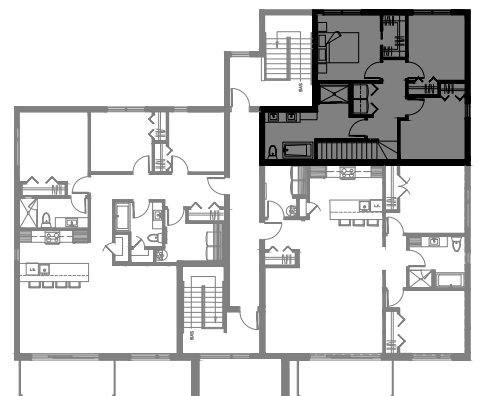
SUPERFICIE TOTALE: 1518 pi² (ÉTAGE 2 = 759pi²)



5465 Boul. René-Lévesque, Sherbrooke



ÉTAGE 1



ÉTAGE 2