

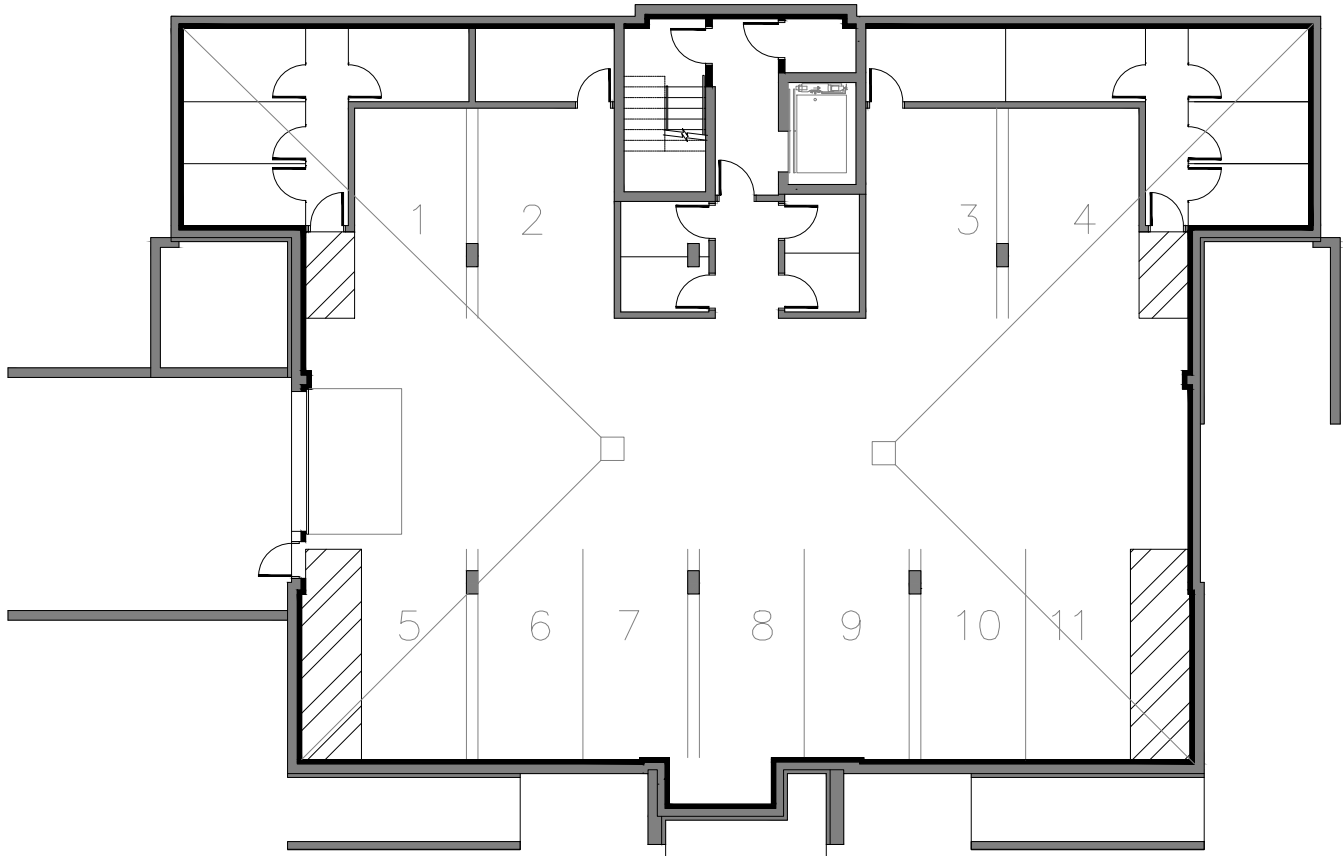


4869 Boul. René-Lévesque, Sherbrooke

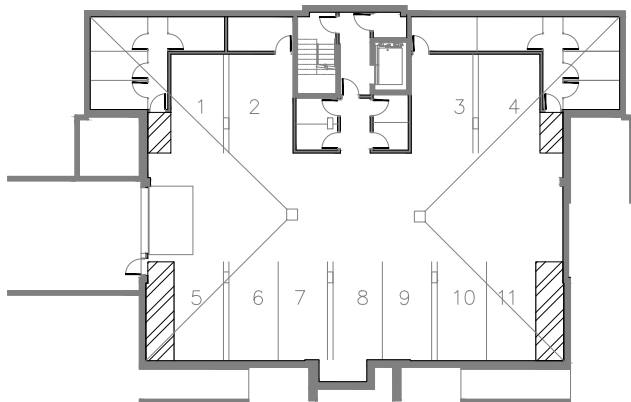
12 LOGEMENTS

STATIONNEMENTS & CABANONS

SUPERFICIE TOTALE: 5573 pi²



4869 Boul. René-Lévesque, Sherbrooke

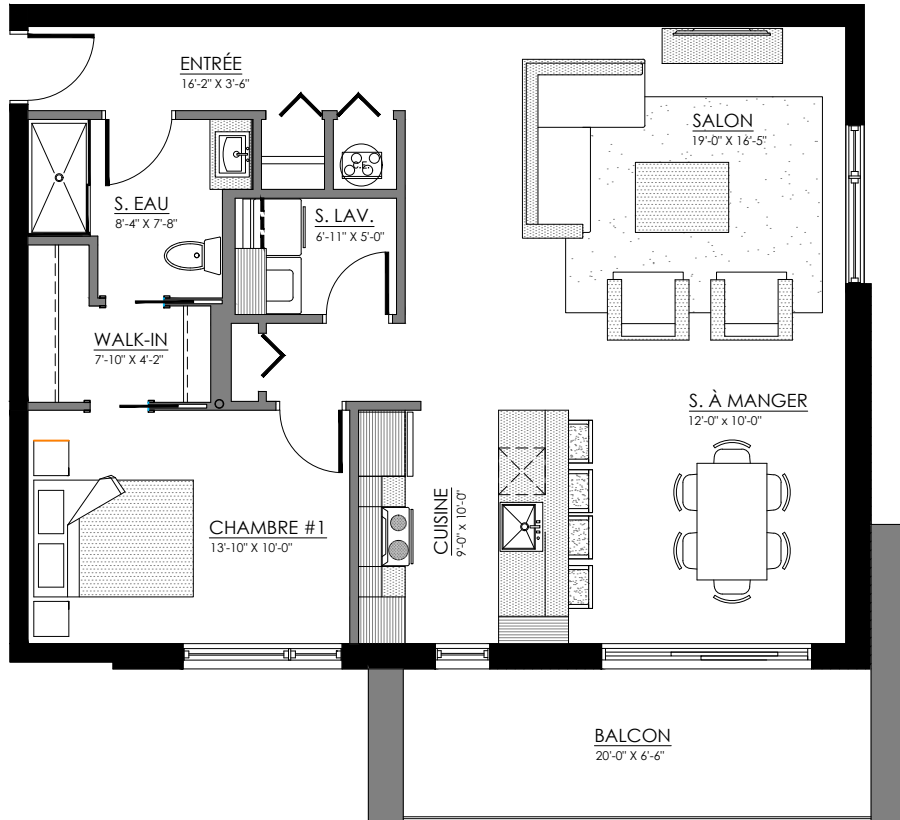


SOUS-SOL

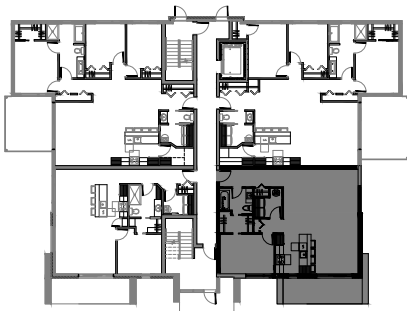


3½ - LOGEMENT 101

SUPERFICIE TOTALE: 1024 pi²



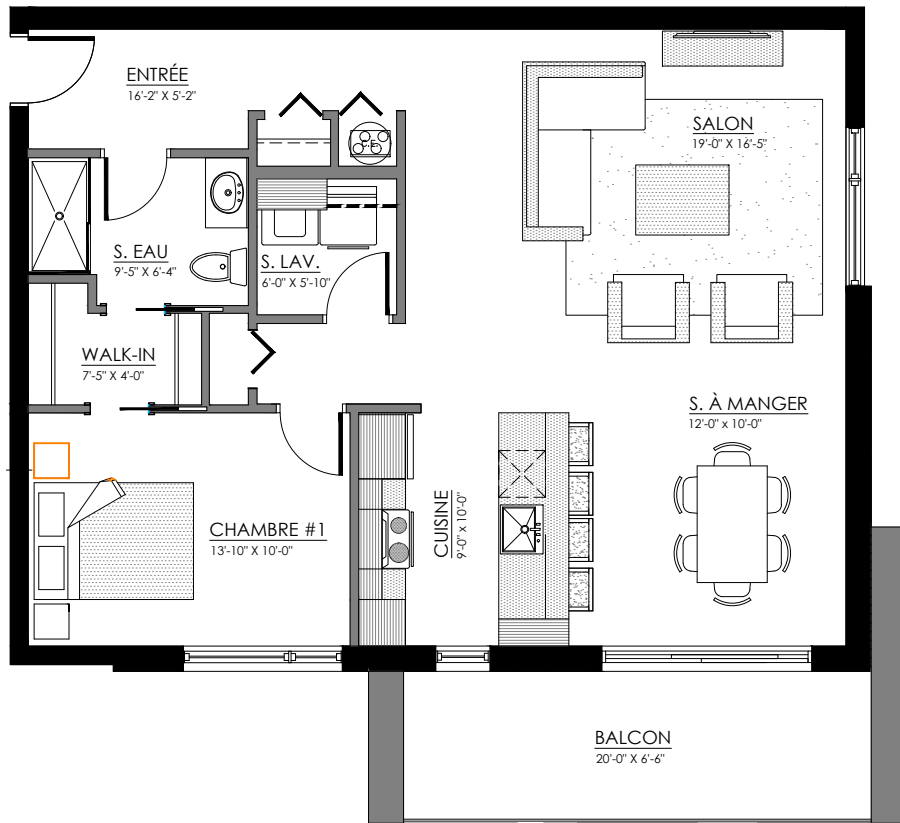
4869 Boul. René-Lévesque, Sherbrooke



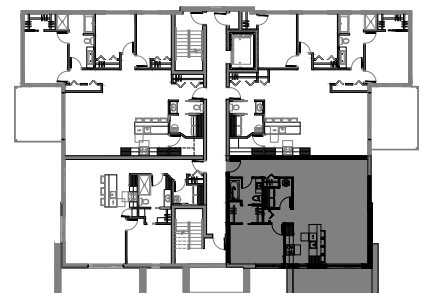
REZ-DE-CHAUSSÉE

3½ - LOGEMENTS 201-301

SUPERFICIE TOTALE: 1024 pi²



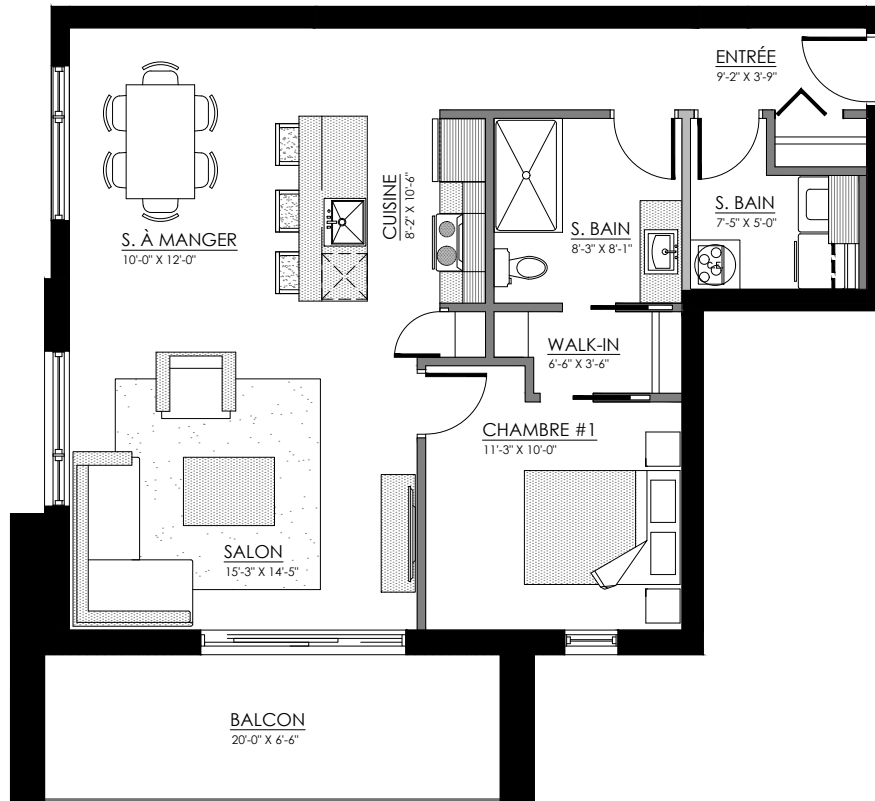
4869 Boul. René-Lévesque, Sherbrooke



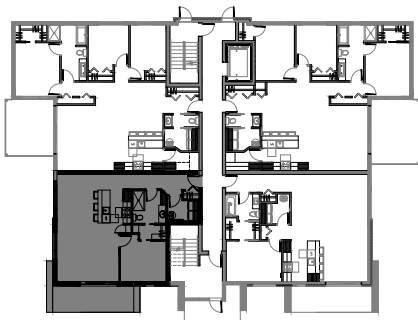
ÉTAGE 2 et 3

3½ - LOGEMENT 102

SUPERFICIE TOTALE: 905 pi²



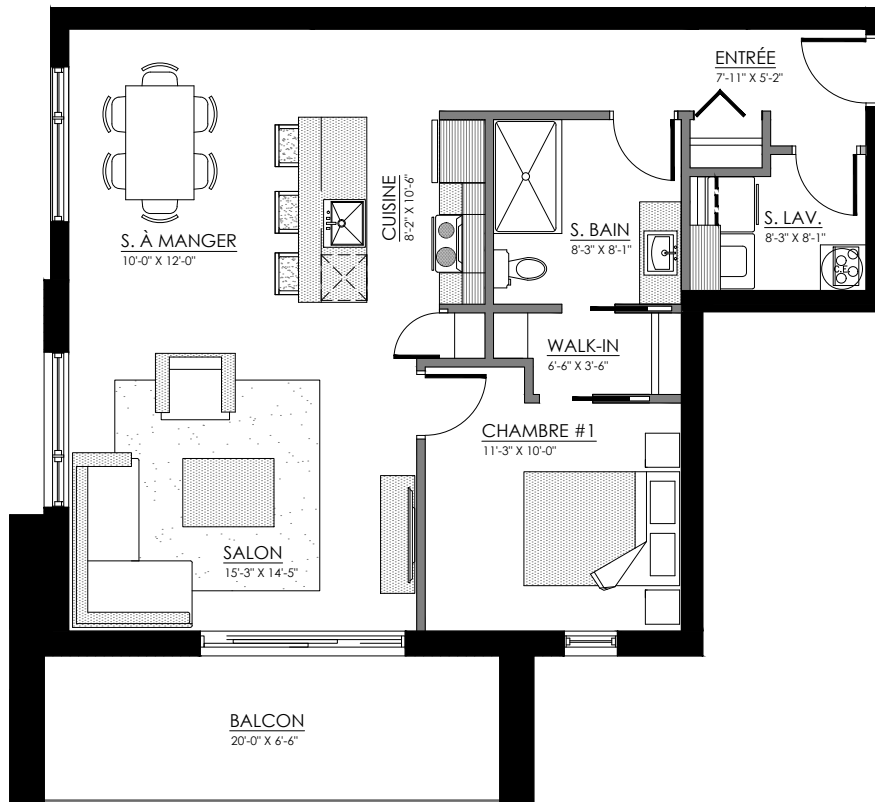
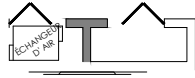
4869 Boul. René-Lévesque, Sherbrooke



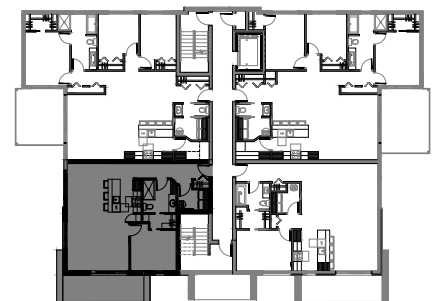
REZ-DE-CHAUSSÉE

3½ - LOGEMENTS 202-302

SUPERFICIE TOTALE: 905 pi²



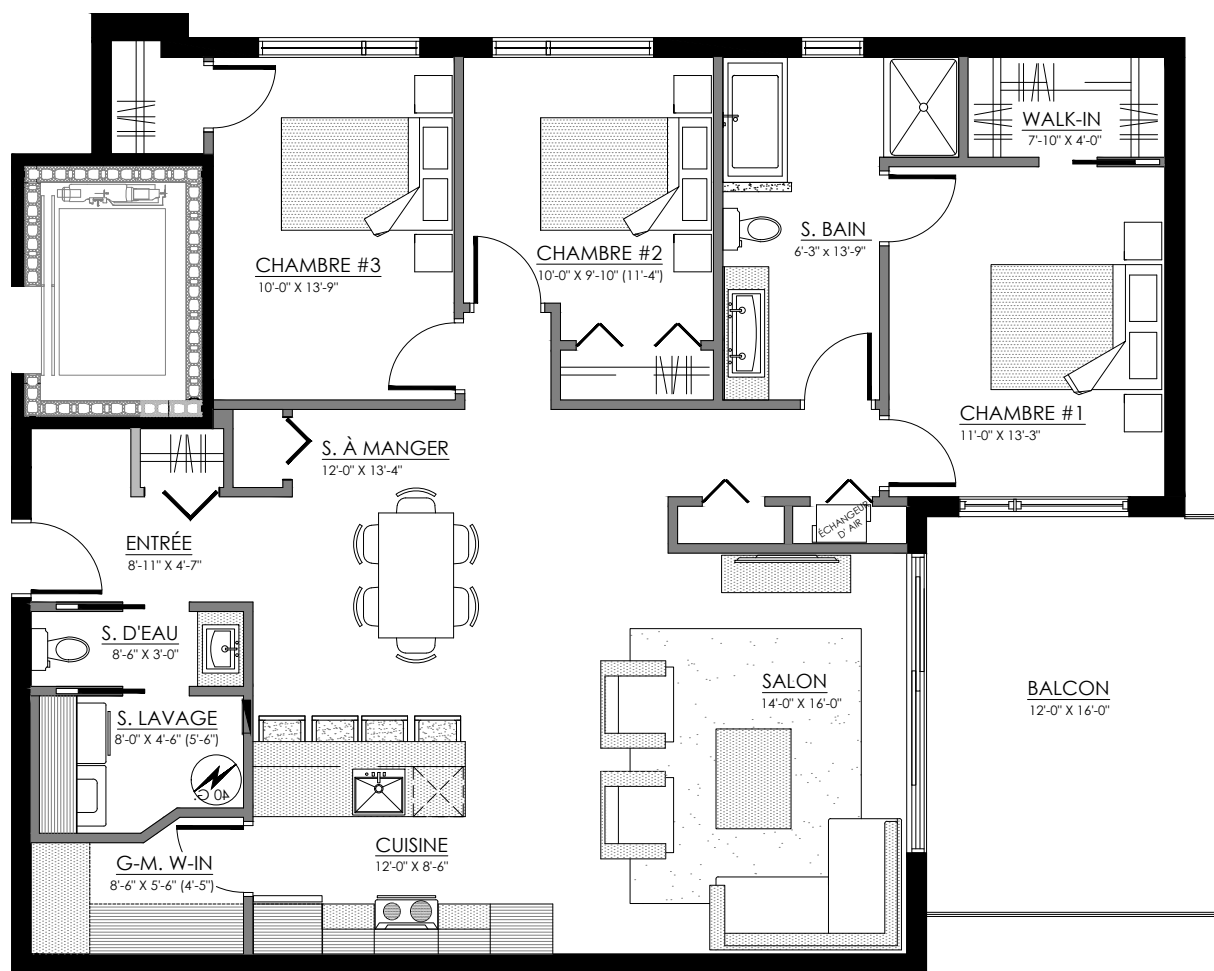
4869 Boul. René-Lévesque, Sherbrooke



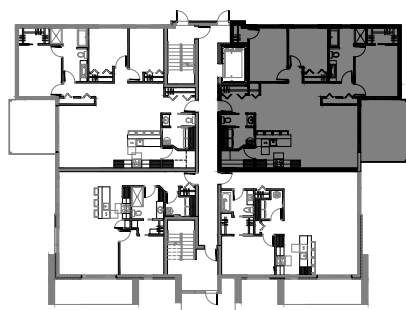
ÉTAGE 2 et 3

5½ - LOGEMENTS 103-203-303

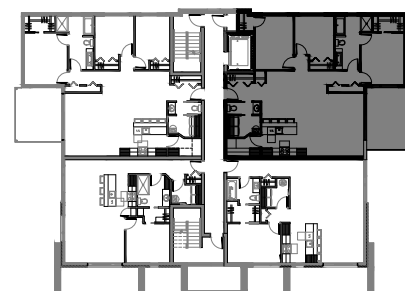
SUPERFICIE TOTALE: 1468 pi²



4869 Boul. René-Lévesque, Sherbrooke



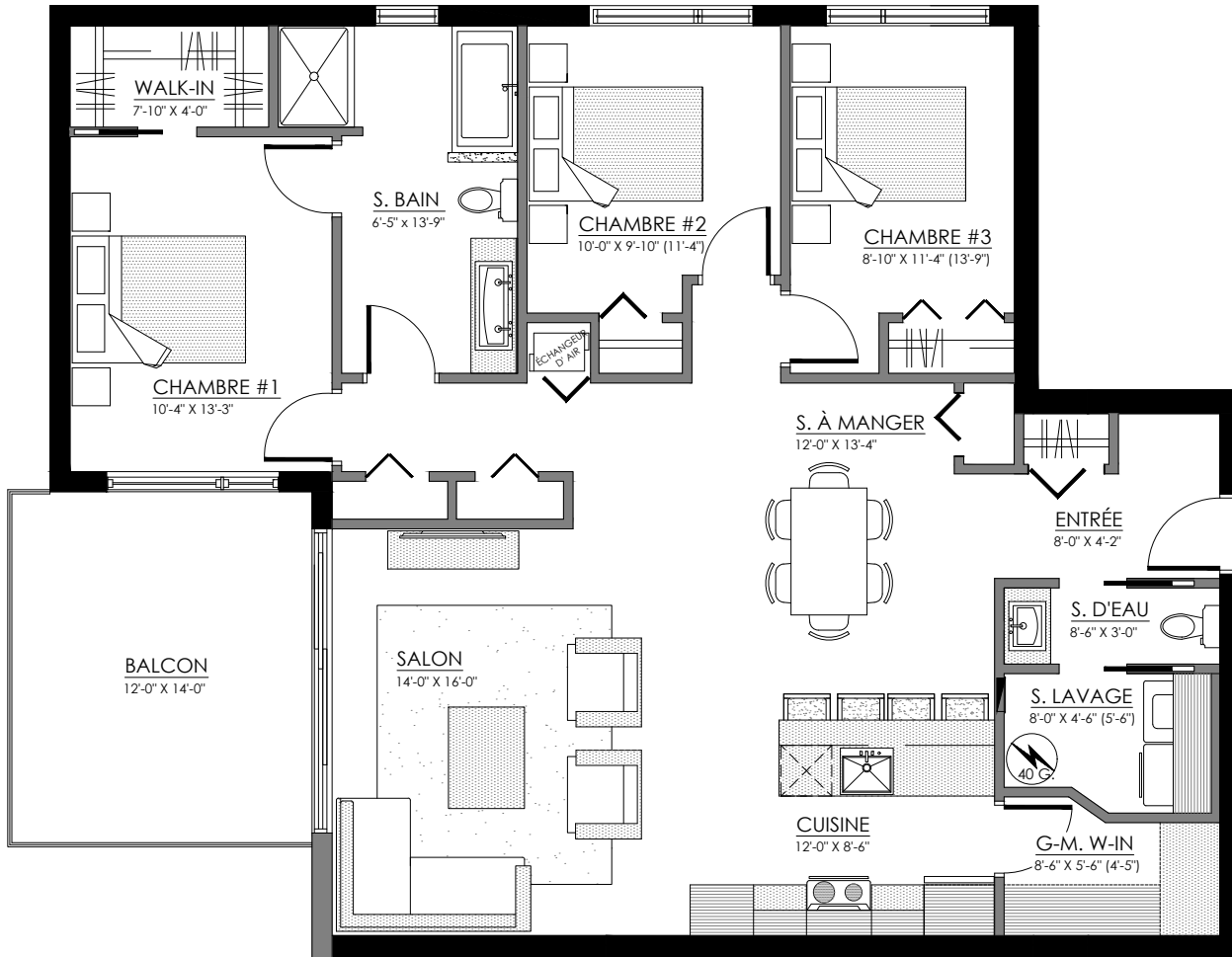
REZ-DE-CHAUSSÉE



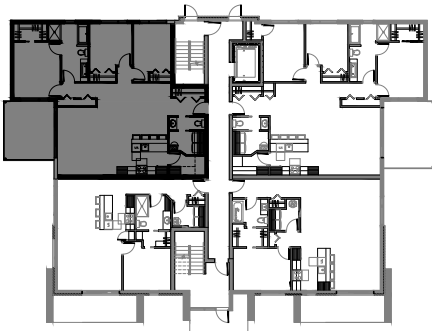
ÉTAGE 2 et 3

5½ - LOGEMENT 104

SUPERFICIE TOTALE: 1433 pi²



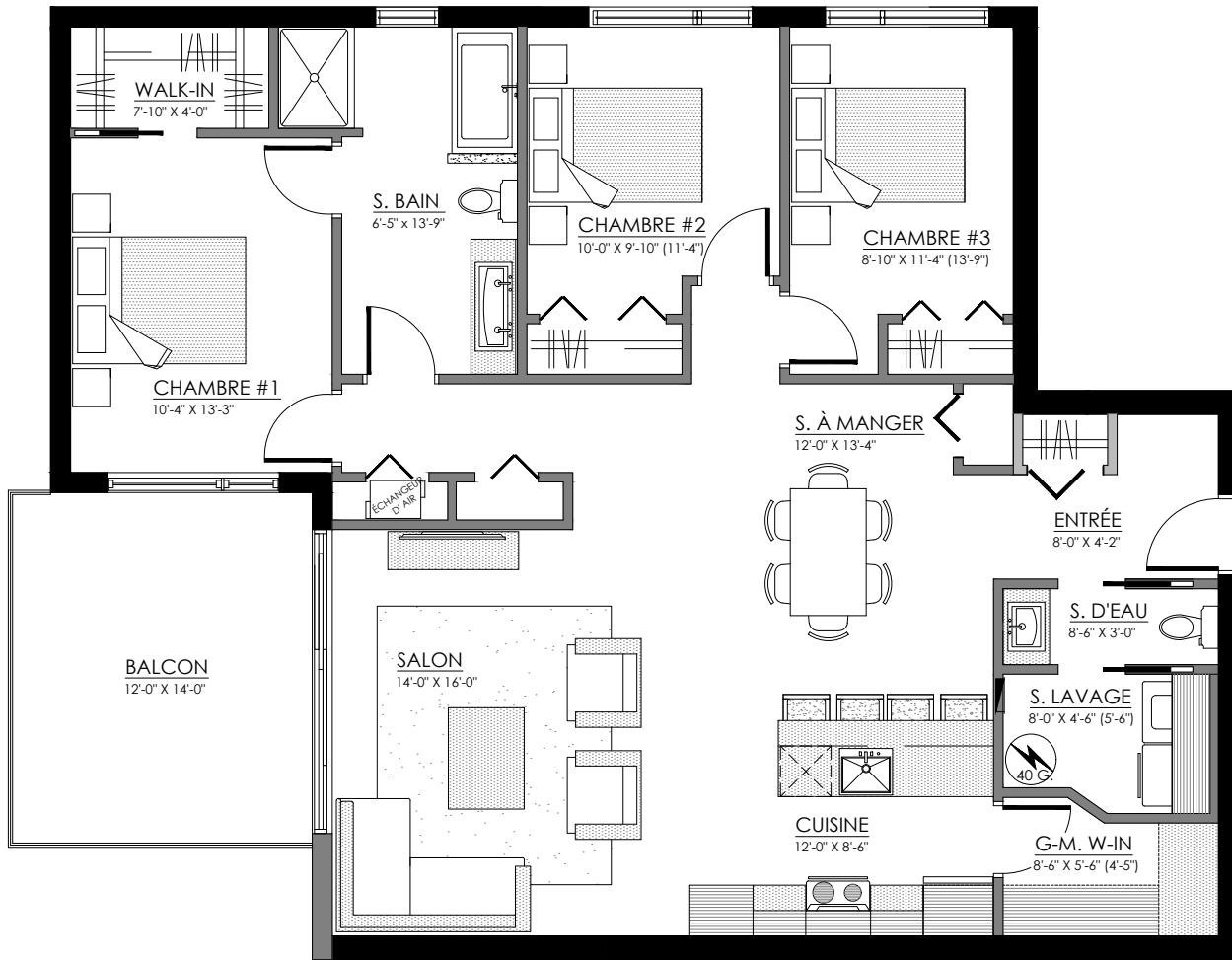
4869 Boul. René-Lévesque, Sherbrooke



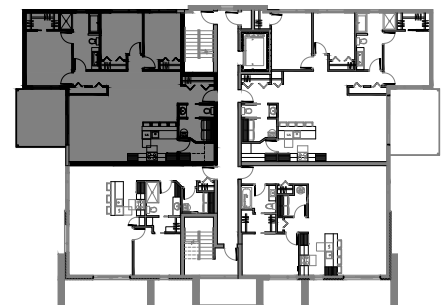
REZ-DE-CHAUSSÉE

5½ - LOGEMENTS 204-304

SUPERFICIE TOTALE: 1433 pi²



4869 Boul. René-Lévesque, Sherbrooke



ÉTAGE 2 et 3