

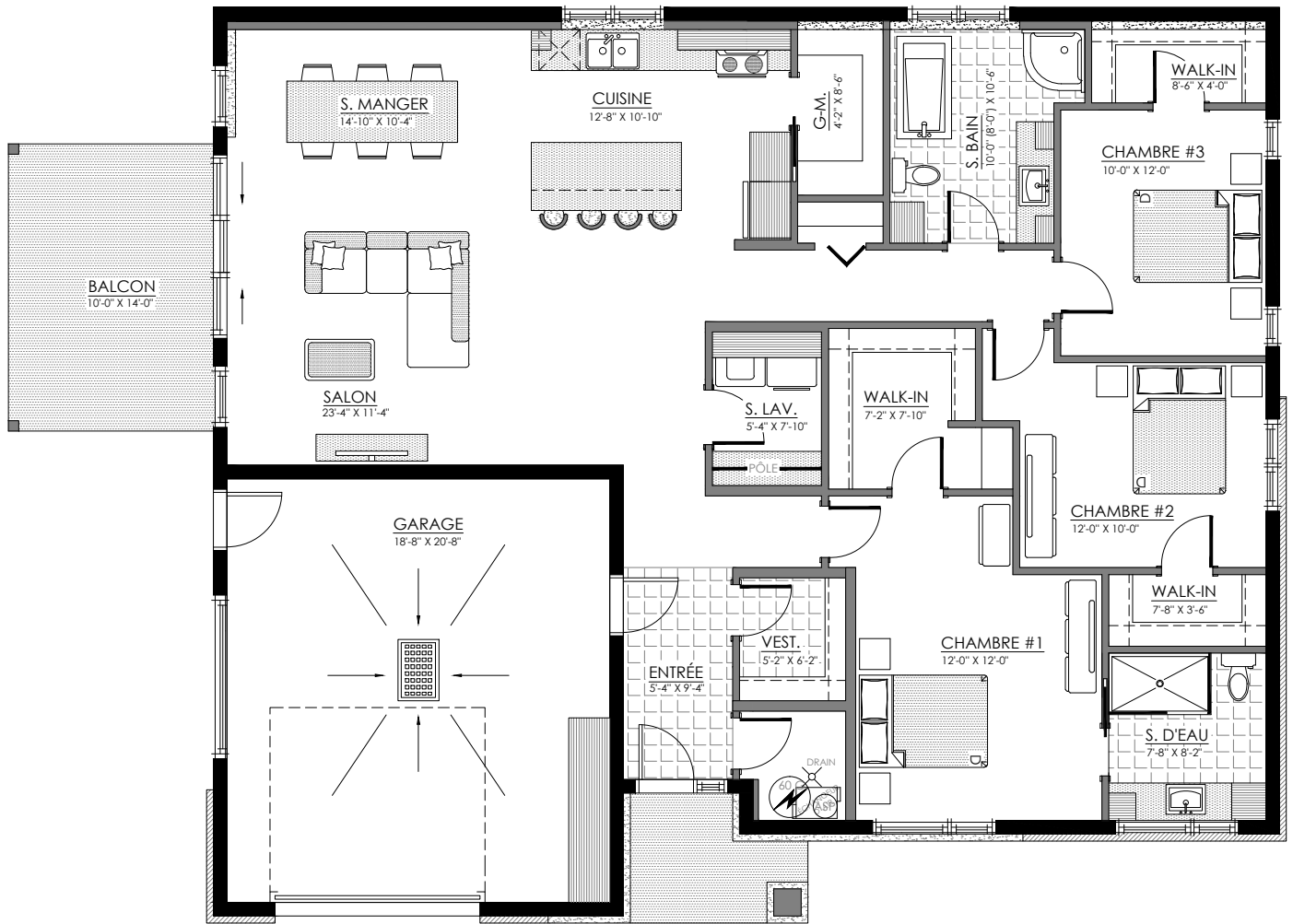


1604 à 1612 rue Calypso, Magog

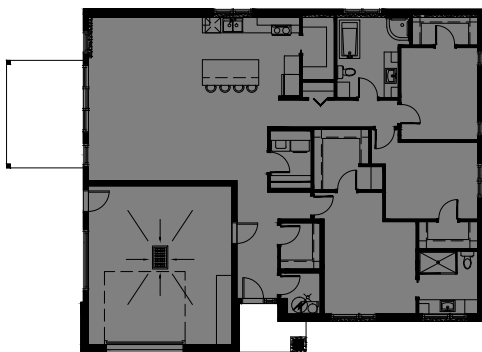
5 LOGEMENTS

5 1/2 avec garage - LOGEMENT NIV. 1

SUPERFICIE TOTALE: 2193 pi² (logement: 1743pi² / Garage: 450pi²)



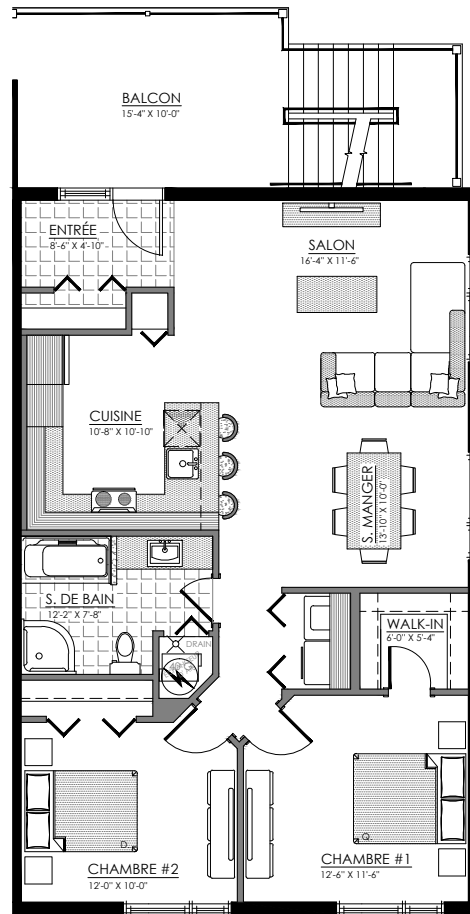
1604 rue Calypso, Magog



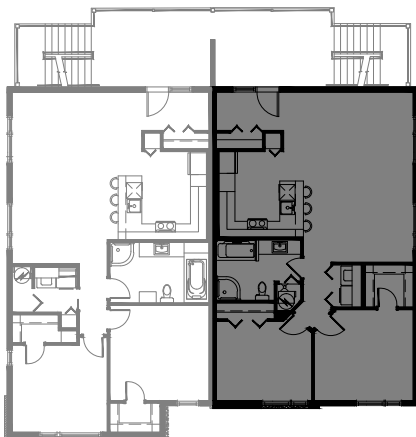
NIVEAU 1

4 1/2 - LOGEMENT NIV. 2 (DROITE)

SUPERFICIE TOTALE: 1050 pi²



1606 rue Calypso, Magog

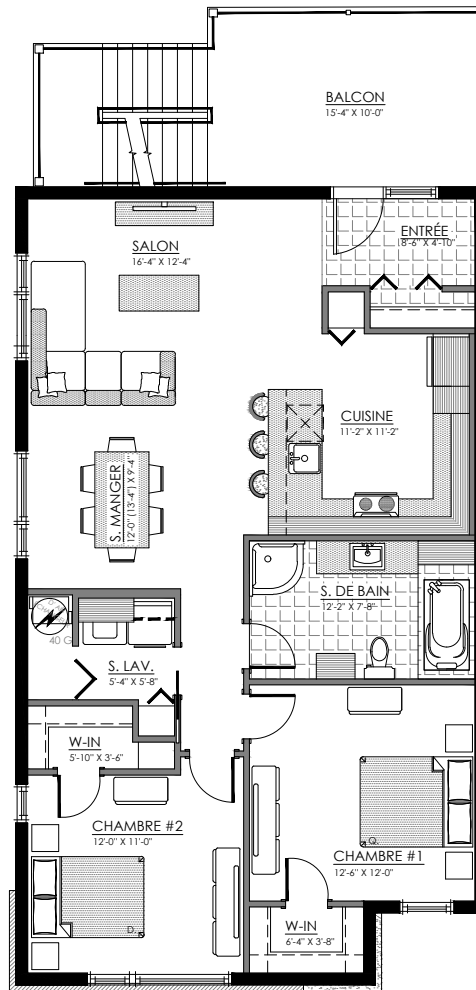


NIVEAU 2

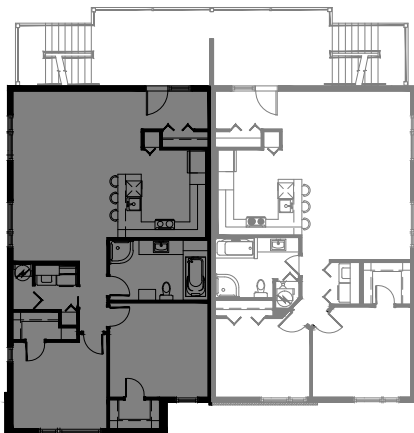


4 1/2 - LOGEMENT NIV. 2 (GAUCHE)

SUPERFICIE TOTALE: 1139 pi²



1608 rue Calypso, Magog

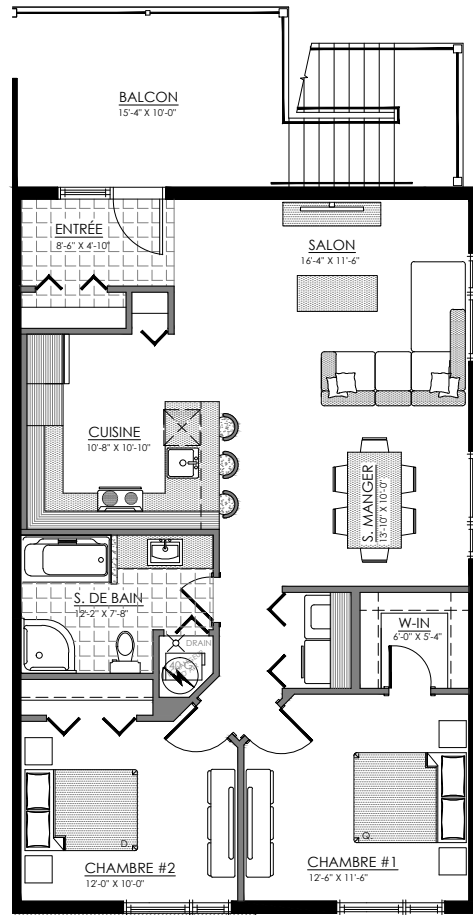


NIVEAU 2

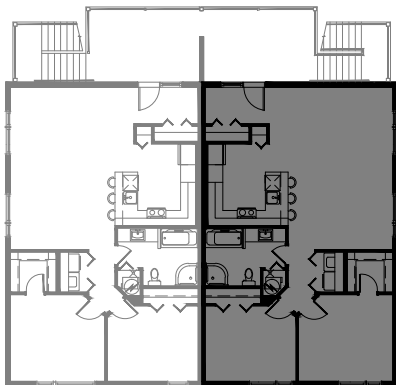


4 1/2 - LOGEMENT NIV. 3 (DROITE)

SUPERFICIE TOTALE: 1050 pi²



1610 rue Calypso, Magog

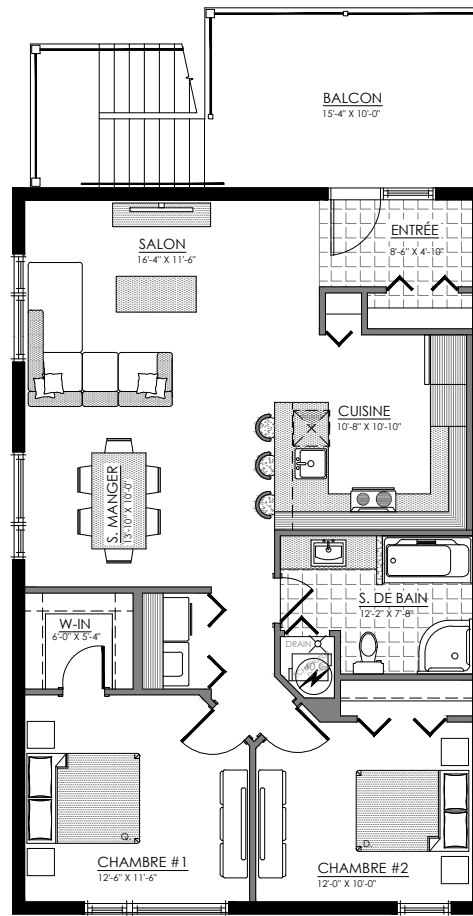


NIVEAU 3

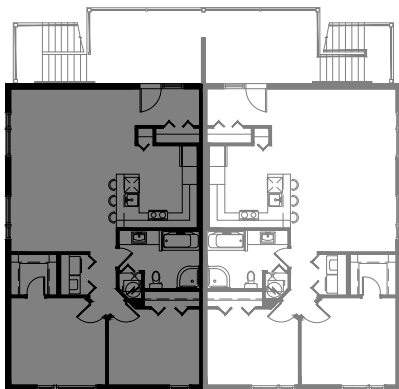


4 1/2 - LOGEMENT NIV. 3 (GAUCHE)

SUPERFICIE TOTALE: 1050 pi²



1612 rue Calypso, Magog



NIVEAU 3

